

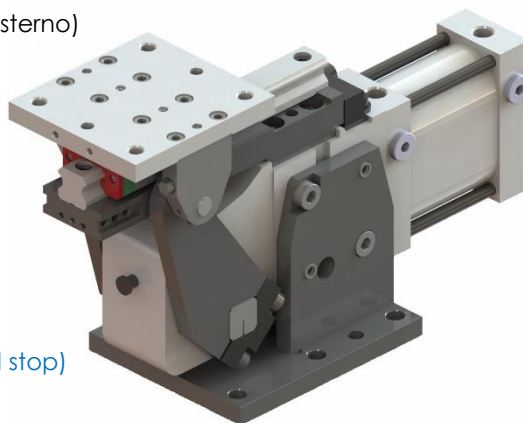


## Dispositivo di scorrimento lineare SLCP63

### Linear unit SLCP63

#### Caratteristiche principali:

- Corsa regolabile da 5 – 90 mm con intervalli predefiniti
- Ripetibilità posizione di lavoro:  $\pm 0,02$  mm (con opt arresto esterno)
- Cilindro pneumatico con alesaggio 63 mm
- Irreversibilità in posizione di lavoro
- Ammortizzazione pneumatica in posizione di riposo
- Sensore induttivo M12
- Arresto esterno in posizione di Lavoro (opt)
- Protezione in lamiera, con Raschiatore o con Soffietto (opt)
- Comando Manuale (opt)



#### Main characteristics:

- Adjustable stroke from 5 to 90 mm with steps
- Repeatability at end position:  $\pm 0,02$  mm (opt. external hard stop)
- Pneumatic cylinder 63 bore
- Self-Locking mechanism at end position
- Cushioning at the back position
- M12 Proximity sensors
- External hard stop at end position (opt.)
- Metal sheet covers, Scraper or bellows (opt)
- Hand lever command (opt)


[PDF](#)

[3D Step](#)

[WEB](#)

#### Indice.

#### Index.

Pagina Page	Descrizione Description
1	Caratteristiche principali <a href="#">Main characteristics</a>
2	Codice d'ordine <a href="#">Ordering example</a>
3	SLCP63 - 90/...-X-X
4	SLCP63 - 90/...-F-X
5	SLCPM63 – 90/...
6	Ripari / <a href="#">Covers</a>
7	Schema sensore finecorsa <a href="#">Limit switch diagram</a> Schema pneumatico <a href="#">Pneumatic plan</a>
8	Istruzioni operative. <a href="#">Operating instructions</a>
9	Ricambi / <a href="#">Spare parts</a>
9	Note / <a href="#">Notes</a>



**Codice d'ordine.**  
**Ordering example.**

**SLCP63 - 90 / 36 - LA - X - S1**

**SLCP63**  
alesaggio Ø 63 mm,  
1 carrello, carico max. 15 Kg  
cylinder bore Ø 63 mm,  
1 runner block, max. load 15 Kg


**SLCPM63**  
con comando manuale  
alesaggio Ø 63 mm,  
1 carrello, carico max. 15 Kg  
with hand lever  
cylinder bore Ø 63 mm,  
1 runner block, max. load 15 Kg

**Posizione comando manuale:**  
(specificare solo per tipo SLCPM)  
**Hand lever position:**  
(specify only for SLCPM type)

**LX:** predisposizione per comando manuale  
Hand lever arrangement

**LA:** leva lato sinistro  
Hand lever at the left side

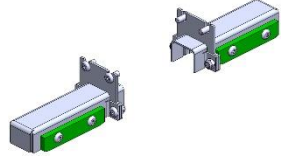
**LB:** leva lato destro  
Hand lever at the right side



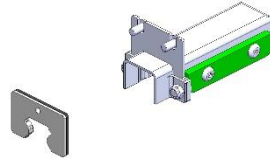
**Riparo:**  
**Cover:**

**X:** senza riparo  
without cover

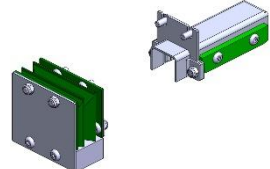
**S1:** con riparo in lamiera completo  
with a complete metal sheet cover



**S2:** con raschiatore anteriore e riparo in lamiera posteriore  
with scraper on the front side and metal sheet cover on the back side



**S3:** con soffiETTO anteriore e riparo in lamiera posteriore  
with bellows on the front side and metal sheet cover on the back side

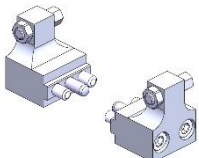


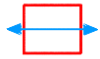
Tipo Type	Corsa Adjustable stroke [mm]	
90	5	8
	12	16
	20	25
	31	36
	41	48
	55	62
	70	77
85	90	

**Tassello esterno in posizione di chiusura:**  
**External stop in closing position:**

**X:** senza tassello esterno  
without external hard stop

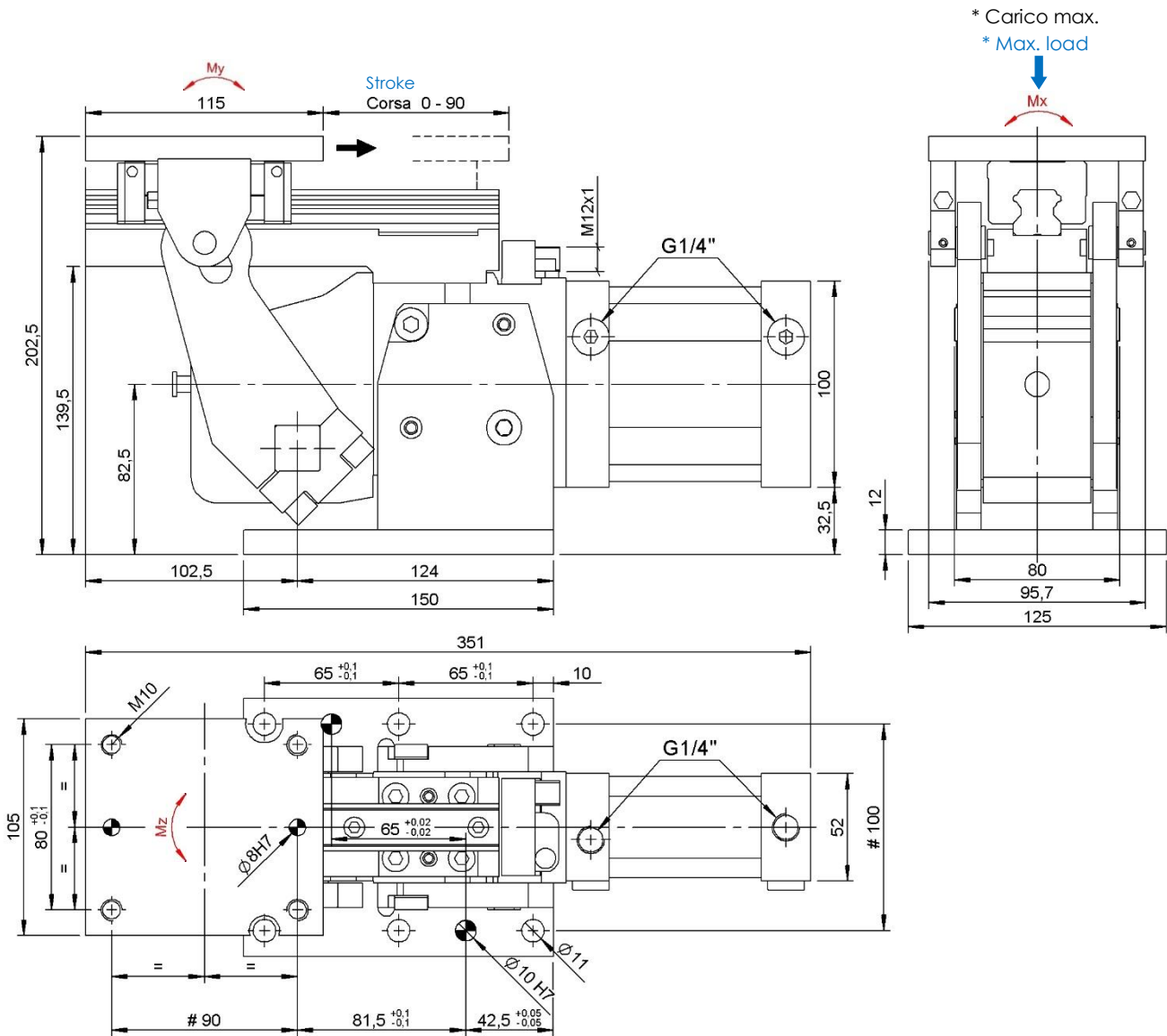
**F:** con tassello esterno  
with external hard stop





## SLCP63 - 90/...-X-X

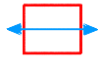
Slitta lineare, D.63, 1 carrello, corsa vario  
Linear unit, D.63, 1 runner blocks, various stroke



Tolleranza su corsa:  $\pm 0,5$  mm  
Stroke tolerance:  $\pm 0,5$  mm

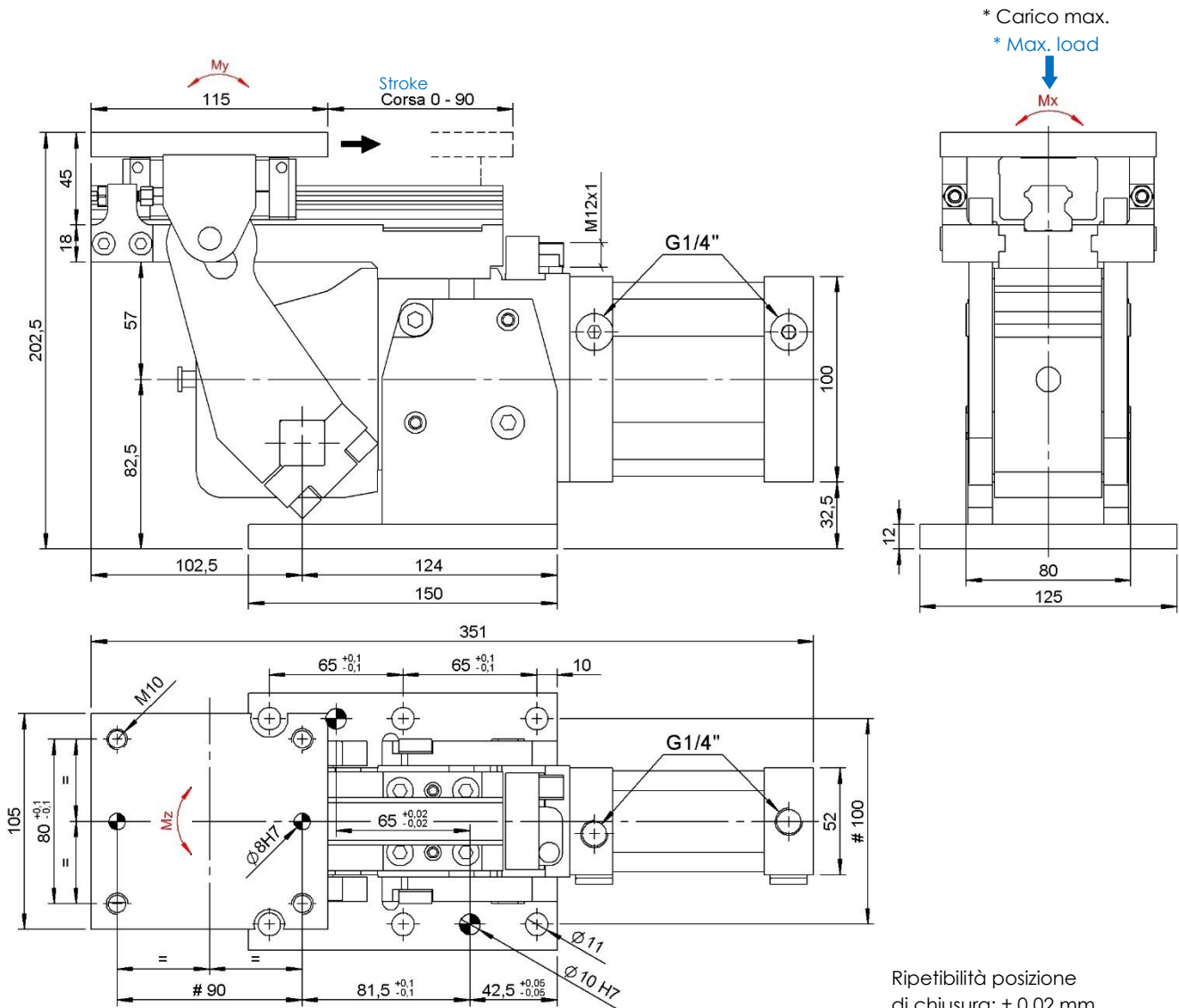
# Tolleranze: fori spina:  $\pm 0.02$  | fori filettati:  $\pm 0.1$   
#Tolerances: dowel holes:  $\pm 0.02$  | screw holes:  $\pm 0.1$

Modello Type	Alesaggio Cylinder bore	Corsa regolabile Adjustable stroke	Momento di ritegno Holding moment	* Carico max. applicabile * Max. applicable load (5 bar)	Peso Weight	Momento dinamico max. Dynamic torque max			Consumo aria Air consumption (5 bar)	Pressione d'esercizio Working pressure	Spinta max. Max. thrust force (5 bar)
	[mm]	[mm]	[Nm]	[Kg]	[Kg]	Mx	My	Mz	[l]	[bar]	[N]
SLCP63...	63	5 ÷ 90	1700	15	8,0	15	20	30	1,9	4 - 7	1560



## SLCP63 - 90/...-F-X

Slitta lineare, D.63, 1 carrello, corsa vario, arresto esterno  
 Linear unit, D.63, 1 runner blocks, various stroke, external stop

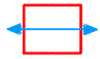


Ripetibilità posizione di chiusura:  $\pm 0,02$  mm  
 Repeatability at end position:  $\pm 0,02$  mm

Tolleranza su corsa:  $\pm 0,5$  mm  
 Stroke tolerance:  $\pm 0,5$  mm

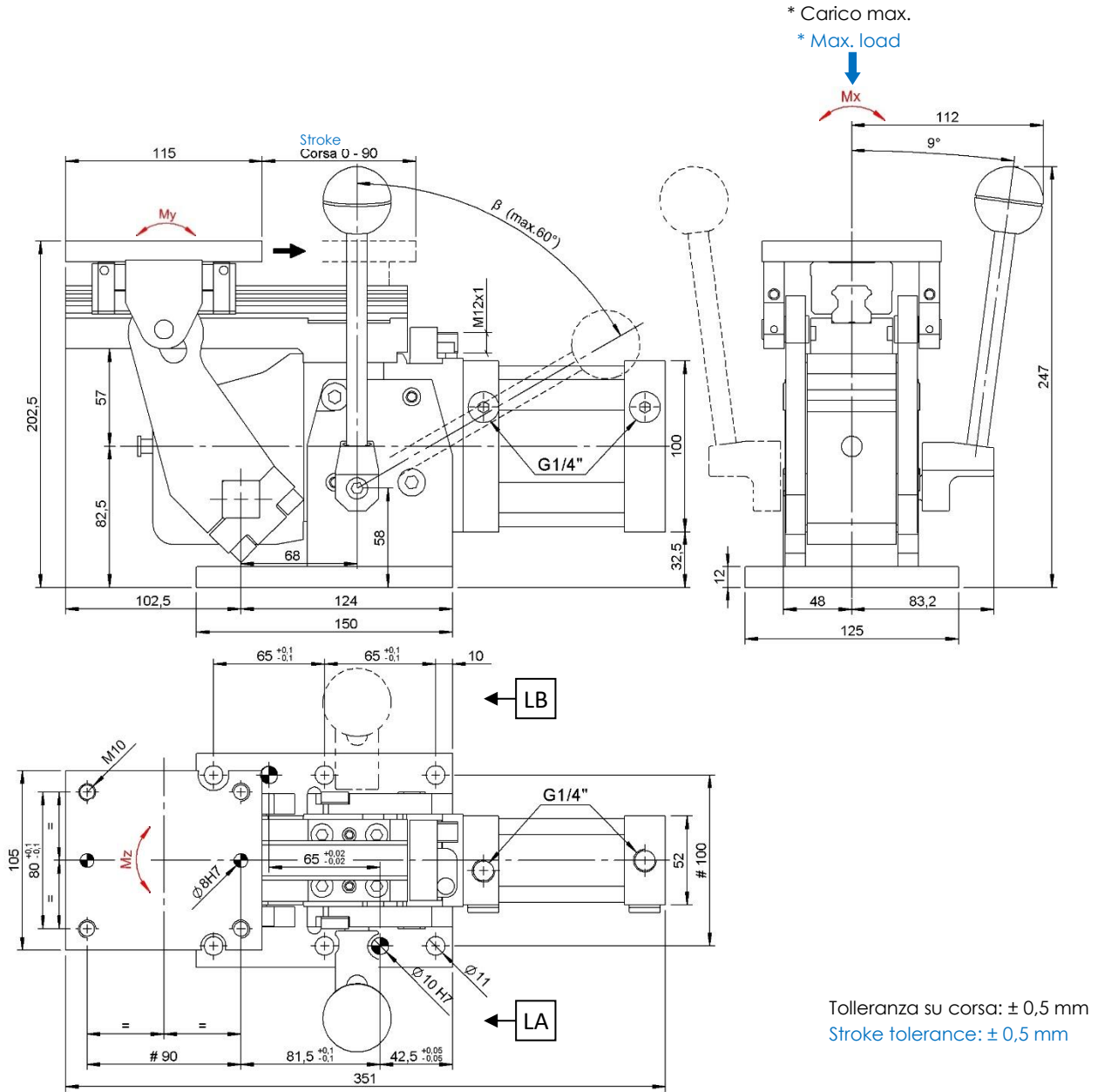
# Tolleranze: fori spina:  $\pm 0,02$  | fori filettati:  $\pm 0,1$   
 #Tolerances: dowel holes:  $\pm 0,02$  | screw holes:  $\pm 0,1$

Modello Type	Alesaggio Cylinder bore	Corsa regolabile Adjustable stroke	Momento di ritengo Holding moment	* Carico max. applicabile * Max. applicable load (5 bar)	Peso Weight	Momento dinamico max. Dynamic torque max			Consumo aria Air consumption (5 bar)	Pressione d'esercizio Working pressure	Spinta max. Max. thrust force (5 bar)
	[mm]	[mm]	[Nm]	[Kg]	[Kg]	Mx	My	Mz	[l]	[bar]	[N]
SLCP63...	63	5 ÷ 90	1700	15	8,0	15	20	30	1,9	4 - 7	1560



## SLCPM63 - 90/...-...-X-X

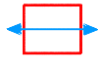
Slitta lineare, D.63, 1 carrello, corsa vario, comando manuale  
 Linear unit, D.63, 1 runner blocks, various stroke, hand lever



Corsa Stroke [mm]	5	8	12	16	20	25	31	36	41	48	55	62	70	77	85	90	Max. forza manuale applicabile Max. manual force [N]
$\beta$ [°]	20	23	27	29	31	34	37	39	42	44	47	49	51	54	57	60	200

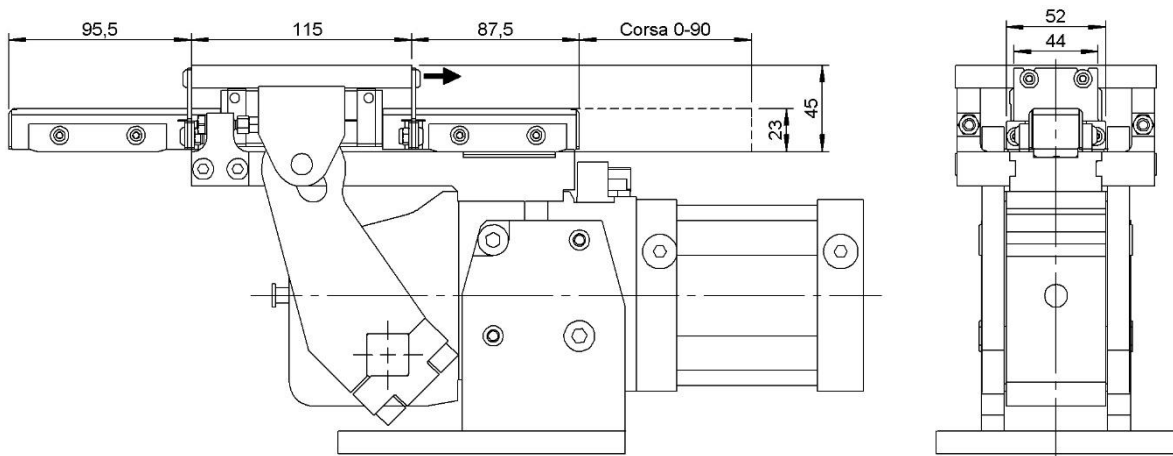
# Tolleranze: fori spina:  $\pm 0.02$  | fori filettati:  $\pm 0.1$   
 #Tolerances: dowel holes:  $\pm 0.02$  | screw holes:  $\pm 0.1$

Modello Type	Alesaggio Cylinder bore	Corsa regolabile Adjustable stroke	Momento di ritegno Holding moment	* Carico max. applicabile * Max. applicable load (5 bar)	Peso Weight	Momento dinamico max. Dynamic torque max	Consumo aria Air consumption (5 bar)	Pressione d'esercizio Working pressure	Spinta max. Max. thrust force (5 bar)
	[mm]	[mm]	[Nm]	[Kg]	[Kg]	[Nm]	[l]	[bar]	[N]
SLCPM63...	63	5 ÷ 90	1700	15	8,0	Mx 15 My 20 Mz 30	1,9	4 - 7	1560

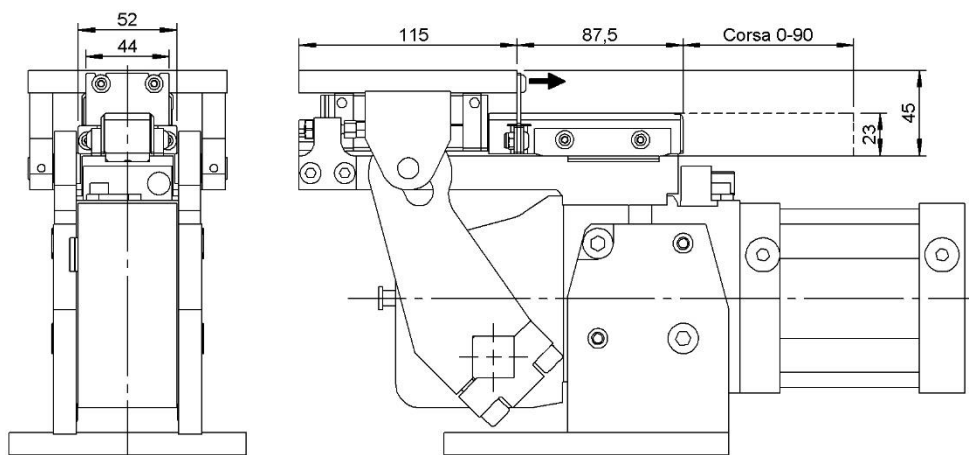


**Riparo.**  
**Cover.**

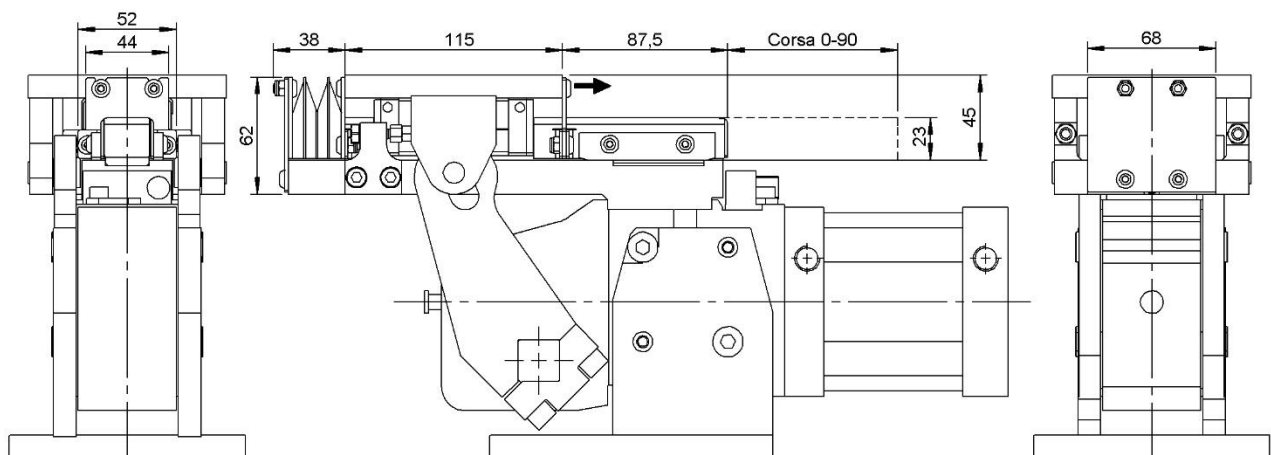
**S1**

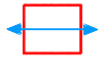


**S2**



**S3**





## Schema finecorsa induttivo M12 (cod. 09127/1/C)

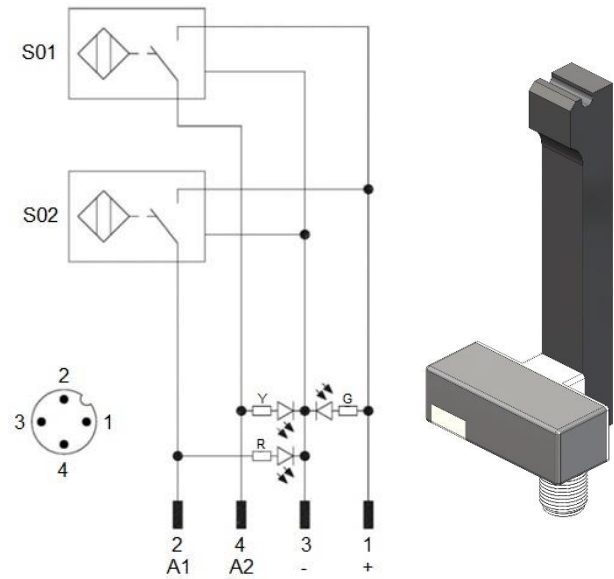
### Diagram for M12 Inductive proximity switch (cod. 09127/1/C).

#### Caratteristiche tecniche:

- Tipo di uscita: PNP
- Tensione d'alimentazione: 10-30 VDC;
- Corrente max. di commutazione: 150 mA;
- Consumo di corrente: < 20 mA;
- Calo di tensione: < 1,8 V
- Campo di temperatura: -25° / 70° C.

#### Technical data:

- Output type: PNP
- Feeding voltage: 10-30 VDC;
- Max. commutating current: 150 mA;
- Power supply: < 20 mA;
- Voltage drop: < 1,8 V;
- Temperature range: -25° / 70° C.



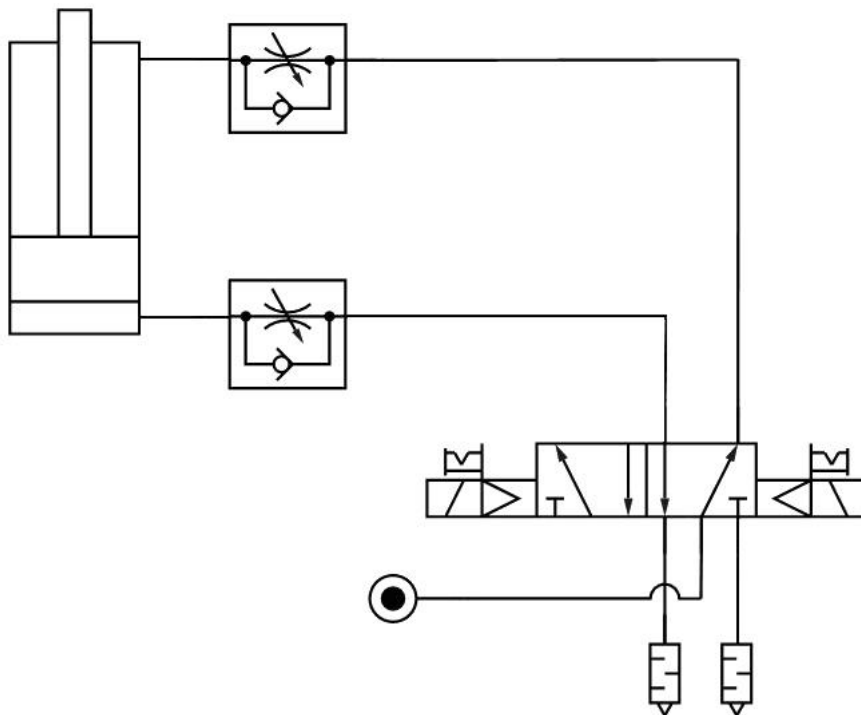
S01 = segnale d'apertura  
 S01 = opening signal  
 S02 = segnale di chiusura  
 S02 = closing signal

Y = LED giallo / yellow LED  
 G = LED verde / green LED  
 R = LED rosso / red LED

1 = filo marrone / brown wire  
 2 = filo nero / black wire  
 3 = filo blu / blue wire  
 4 = filo bianco / white wire

## Schema pneumatico.

### Pneumatic plan.





## Istruzioni operative.

### Operating instructions.

#### Modifica angolo d'apertura.

- Portare la slitta in posizione di apertura; (Imm. 1)
- Svitare il grano M6 sottostante al sensore induttivo; (Imm. 2)
- Inserire nel foro una chiave con  $\varnothing$  max. di 5mm, e spingere la molla applicando una forza  $\geq 80$  N; (Imm. 3)
- Mantenere la spinta sulla molla e spostare manualmente la piastra superiore nella posizione desiderata;
- Rilasciare il sistema a molla per permettere l'aggancio automatico dei componenti.

#### Opening angle change.

- Bring the linear unit in the opening position; (Image 1)
- Unscrew the M6 socket screw below the inductive sensor; (Image 2)
- Put a key with  $\varnothing$  max. 5 mm into the hole, and push the spring applying a force  $\geq 80$  N; (Image 3)
- Keep pushing on the spring and move the upper fixture plate manually to the desired position;
- Release the spring to allow the automatic coupling of the components.

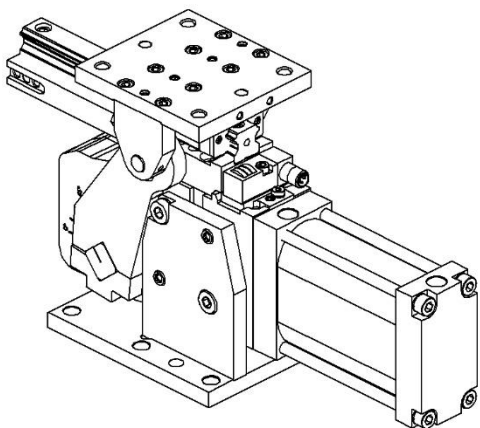


Immagine 1  
Image 1

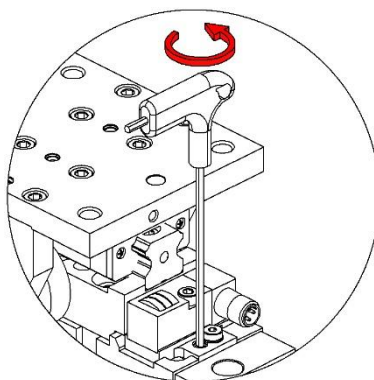


Immagine 2  
Image 2

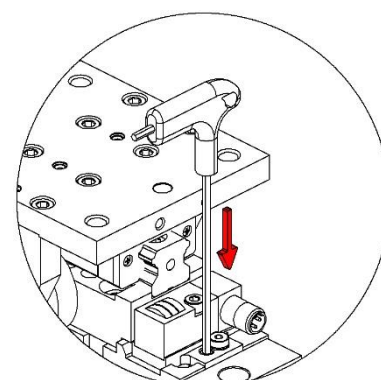


Immagine 3  
Image 3