



Chiusura pneumatica CPL40

Pneumatic clamp CPL40

Caratteristiche principali:

- Fianchetti in alluminio
- Dispositivo a ginocchiera
- Angolo di apertura facilmente modificabile
- Perno di controllo della posizione finale
- Leve versatili in ghisa e alluminio V e H
- 4 possibilità di staffaggio (fronte, retro e sui lati)
- Alesaggio del cilindro pneumatico: 40 mm
- 2 fori di connessione G1/8"
- Finecorsa induttivo (connessione M12x1)
- Comando manuale

Main characteristics:

- Aluminum flanks
- Toggle action mechanism
- Opening angle easily adjustable
- Checking pin for verifying the end position
- Versatile iron steel and aluminum arms V and H
- 4 mounting areas (front, back, on the sides)
- Pneumatic cylinder bore: 40 mm
- 2 feeding ports G1/8"
- Inductive proximity switch (connection M12x1)
- Hand lever


[PDF](#)
[3D Step](#)
[Index](#)


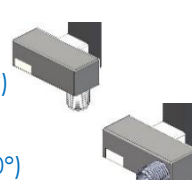



Indice.

Index.

Pagina Page	Descrizione Description	
1	Caratteristiche principali / Main characteristics	
2	Codice d'ordine / Ordering example	
3 - 4	Pagina dimensionale Dimensional page	CPL40-V1... / CPL40-H1...
5 - 6		CPL40-V1...S / CPL40-H1...S
7 - 8		CPL40-V2... / CPL40-H2...
9 - 10		CPL40-V2...S / CPL40-H2...S
11 - 12		CPL40-V3... / CPL40-H3...
13 - 14		CPL40-V3...S / CPL40-H3...S
15 - 16		CPLM40 V1... / CPLM40 H1...
17 - 18		CPLM40 V1...S / CPLM40 H1...S
19 - 20		CPLM40 V2... / CPLM40 H2...
21 - 22		CPLM40 V2...S / CPLM40 H2...S
23 - 24		CPLM40 V3... / CPLM40 H3...
25 - 26		CPLM40 V3...S / CPLM40 H3...S
27	Diagrammi / Diagrams	
28	Schemi Diagrams	Finecorsa induttivo M12 M12 Inductive proximity switch
		Schema pneumatico / Pneumatic plan
29	Istruzioni operative Operating instructions	Modifica cambio angolo d'apertura Opening angle change
30	Ricambi / Spare parts	
31	Note / Notes	



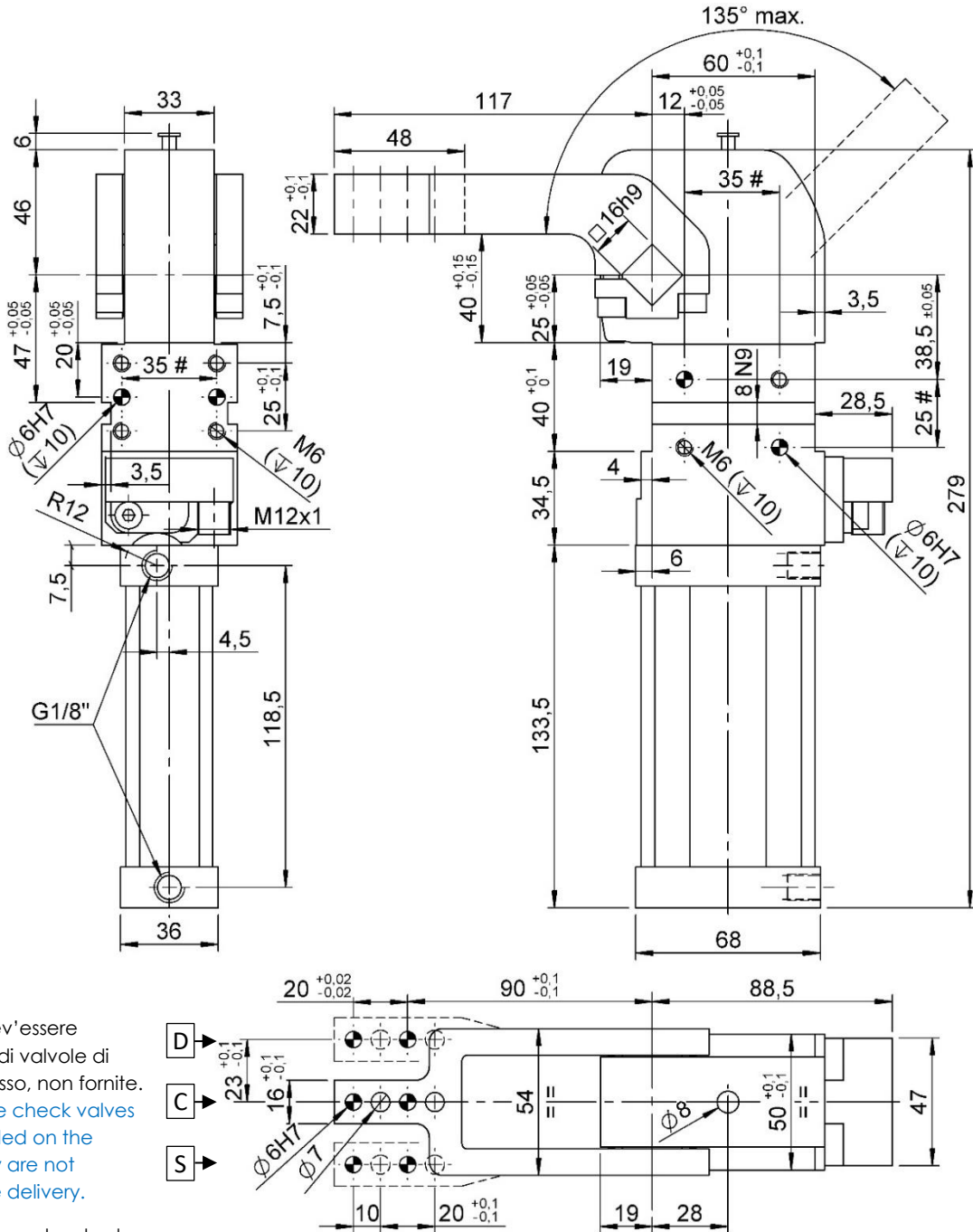
Codice d'ordine. Ordering example.

CPL40	LA	V1C	I 1	G	-	107																																																																																							
<p>Modello ed alesaggio cilindro: Model and cylinder bore CPL40 chiusura standard CPL alesaggio Ø40mm standard clamp CPL cylinder bore Ø40mm CPLM40 chiusura standard CPL con comando manuale alesaggio Ø40mm standard clamp CPL with hand lever cylinder bore Ø40mm</p> 			<p>Finecorsa: Proximity switch: X: senza finecorsa without proximity switch I1: finecorsa induttivo VEP standard (0°) inductive proximity switch VEP standard (0°) I2: finecorsa induttivo VEP standard (90°) inductive proximity switch VEP standard (90°)</p> 																																																																																										
			<p>Angolo d'apertura regolabile: Adjustable opening angle:</p> <table border="1" style="width: 100%; border-collapse: collapse;"> <thead> <tr style="background-color: #0070C0; color: white;"> <th></th> <th colspan="3">CPL40</th> <th colspan="3">CPLM40</th> </tr> <tr> <th>Tipo Type</th> <th>da from</th> <th>a to</th> <th>Standard</th> <th>da from</th> <th>a to</th> <th>Standard</th> </tr> </thead> <tbody> <tr> <td>V1...</td> <td rowspan="3">2°</td> <td>135°</td> <td>122°</td> <td rowspan="3">2°</td> <td>108°</td> <td>108°</td> </tr> <tr> <td>V2...</td> <td>103°</td> <td>103°</td> <td>103°</td> </tr> <tr> <td>V3...</td> <td>122°</td> <td>108°</td> <td>108°</td> </tr> <tr> <td>H1...</td> <td>2°</td> <td>135°</td> <td>122°</td> <td rowspan="3">2°</td> <td>108°</td> <td>108°</td> </tr> <tr> <td>H2...</td> <td>2°</td> <td>31°</td> <td>31°</td> <td>31°</td> </tr> <tr> <td>H3...</td> <td>2°</td> <td>19°</td> <td>19°</td> <td>19°</td> </tr> <tr> <td>V1...S</td> <td>2°</td> <td>57°</td> <td>57°</td> <td>2°</td> <td>31°</td> <td>31°</td> </tr> <tr> <td>V2...S</td> <td>2°</td> <td>19°</td> <td>19°</td> <td>2°</td> <td>19°</td> <td>19°</td> </tr> <tr> <td>V3...S</td> <td>2°</td> <td>45°</td> <td>45°</td> <td>2°</td> <td>57°</td> <td>57°</td> </tr> <tr> <td>H1...S</td> <td>2°</td> <td>91°</td> <td>91°</td> <td>2°</td> <td>45°</td> <td>45°</td> </tr> <tr> <td>H2...S</td> <td>2°</td> <td>16°</td> <td>16°</td> <td>2°</td> <td>91°</td> <td>91°</td> </tr> <tr> <td>H3...S</td> <td>2°</td> <td></td> <td></td> <td>2°</td> <td>16°</td> <td>16°</td> </tr> </tbody> </table> <p>Nel caso in cui non indicato, la chiusura verrà fornita con l'angolo d'apertura standard. If not indicated, the clamp will be provided with the standard opening angle.</p>		CPL40			CPLM40			Tipo Type	da from	a to	Standard	da from	a to	Standard	V1...	2°	135°	122°	2°	108°	108°	V2...	103°	103°	103°	V3...	122°	108°	108°	H1...	2°	135°	122°	2°	108°	108°	H2...	2°	31°	31°	31°	H3...	2°	19°	19°	19°	V1...S	2°	57°	57°	2°	31°	31°	V2...S	2°	19°	19°	2°	19°	19°	V3...S	2°	45°	45°	2°	57°	57°	H1...S	2°	91°	91°	2°	45°	45°	H2...S	2°	16°	16°	2°	91°	91°	H3...S	2°			2°	16°	16°		
	CPL40			CPLM40																																																																																									
Tipo Type	da from	a to	Standard	da from	a to	Standard																																																																																							
V1...	2°	135°	122°	2°	108°	108°																																																																																							
V2...		103°	103°		103°																																																																																								
V3...		122°	108°		108°																																																																																								
H1...	2°	135°	122°	2°	108°	108°																																																																																							
H2...	2°	31°	31°		31°																																																																																								
H3...	2°	19°	19°		19°																																																																																								
V1...S	2°	57°	57°	2°	31°	31°																																																																																							
V2...S	2°	19°	19°	2°	19°	19°																																																																																							
V3...S	2°	45°	45°	2°	57°	57°																																																																																							
H1...S	2°	91°	91°	2°	45°	45°																																																																																							
H2...S	2°	16°	16°	2°	91°	91°																																																																																							
H3...S	2°			2°	16°	16°																																																																																							
<p>Posizione comando manuale: (specificare solo per CPLM40) Hand lever position: (specify only for CPLM40) LX: predisposizione leva lever arrangement LA: leva sinistra left lever LB: leva destra right lever</p> 																																																																																													
<p>Tipologia leva: Type of arm: XXX: senza leva / without arm V1C, V1D e V1S (vedere pag.3) (see page 3) H1C, H1D e H1S (vedere pag.4) (see page 4) V1CS, V1DS e V1SS (vedere pag.5) (see page 5) H1CS, H1DS e H1SS (vedere pag.6) (see page 6) V2C, V2D e V2S (vedere pag.7) (see page 7) H2C, H2D e H2S (vedere pag.8) (see page 8) V2CS, V2DS e V2SS (vedere pag.9) (see page 9) H2CS, H2DS e H2SS (vedere pag.10) (see page 10) V3C, V3D e V3S (vedere pag. 11) (see page 11) H3C, H3D e H3S (vedere pag.12) (see page 12) V3CS, V3DS e V3SS (vedere pag.13) (see page 13) H3CS, H3DS e H3SS (vedere pag.14) (see page 14)</p>  <p>N.B.: è possibile trasformare la chiusura tipo V... nel tipo H... semplicemente cambiando la posizione della leva. NOTE: It's possible to transform the clamp type V... into the type H... simply changing the arm position.</p>																																																																																													
				<p>Tipologia fori d'alimentazione: Feeding ports type: G: fori tipo G 1/8" ports type G 1/8" N: fori tipo 1/8" NPT ports type 1/8" NPT</p> 																																																																																									



CPL40 V1...

Chiusura, D.40, Ang. Vario, Leva verticale, Offset 15
 Clamp, D.40, Vario Op. Angle, Vertical arm, Offset 15



Il dispositivo dev'essere equipaggiato di valvole di regolazione flusso, non fornite.
 External throttle check valves must be provided on the assembly. They are not included in the delivery.

Angoli di apertura standard:
 settabile in 34 posizioni differenti in un range tra 2° e 135°.

Standard opening angles:
 settabile in 34 different positions in a range between 2° and 135°.

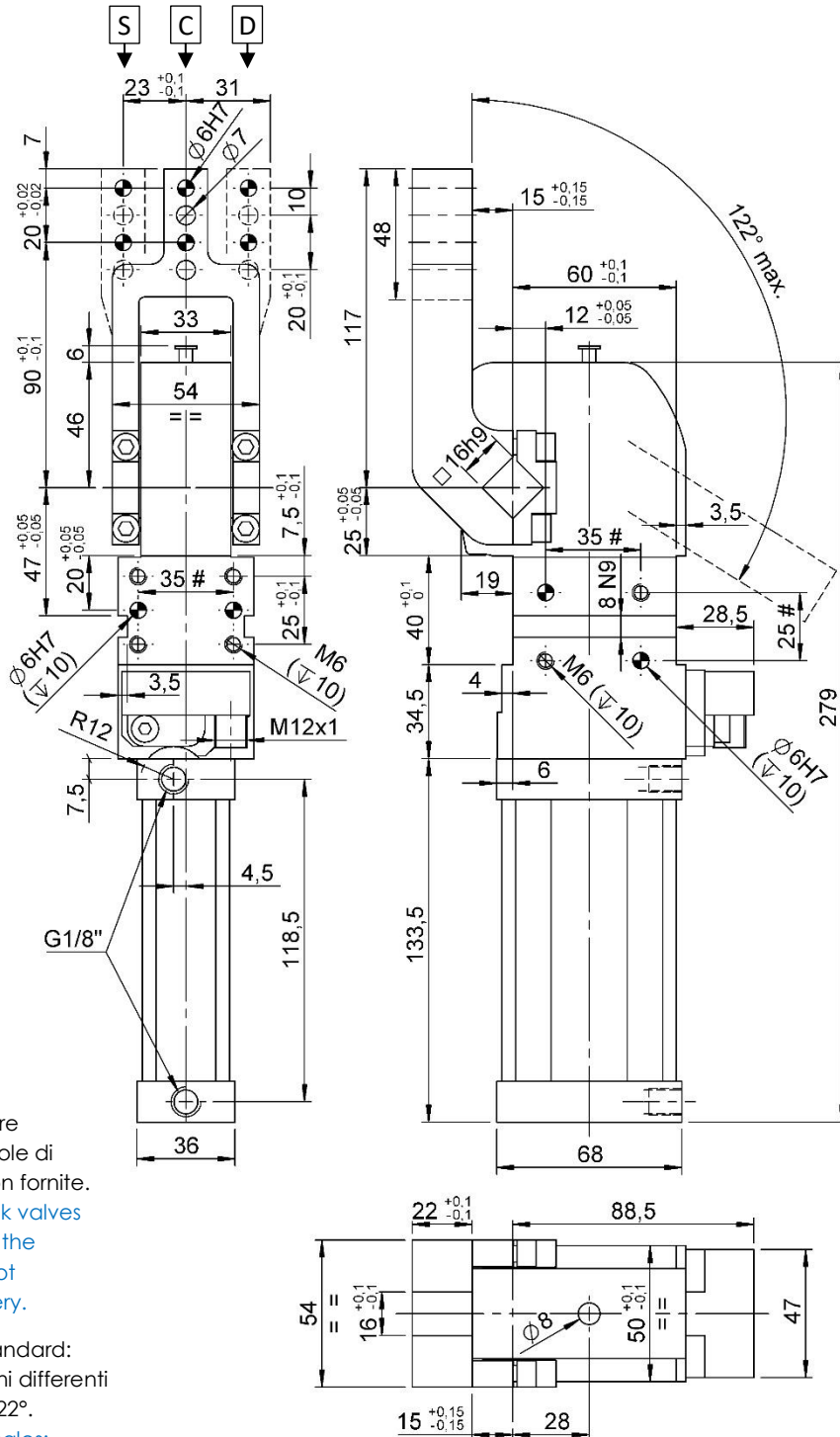
Tolleranze: fori spina ± 0.02 , fori filettati ± 0.1
 # Tolerances: dowel holes ± 0.02 , screw holes ± 0.1

Modello Type	Alesaggio cilindro Cylinder bore	Momento di ritegno Holding moment	Peso Weight	Pressione d'esercizio Working pressure	Coppia max. di bloccaggio Clamping max. torque (5 bar)	Consumo d'aria Air consumption (5 bar)
	[mm]	[Nm]	[Kg]	[bar]	[Nm]	[l]
CPL40 V1...	40	380	~ 2,3	3 - 7	140	~ 1,0



CPL40 H1...

Chiusura, D.40, Ang. Vario, Leva orizzontale, Offset 15
Clamp, D.40, Vario Op. Angle, Horizontal arm, Offset 15



Il dispositivo dev'essere equipaggiato di valvole di regolazione flusso, non fornite.
External throttle check valves must be provided on the assembly. They are not included in the delivery.

Angoli di apertura standard: settabile in 30 posizioni differenti in un range tra 2° e 122°.
Standard opening angles: settabile in 30 different positions in a range between 2° and 122°.

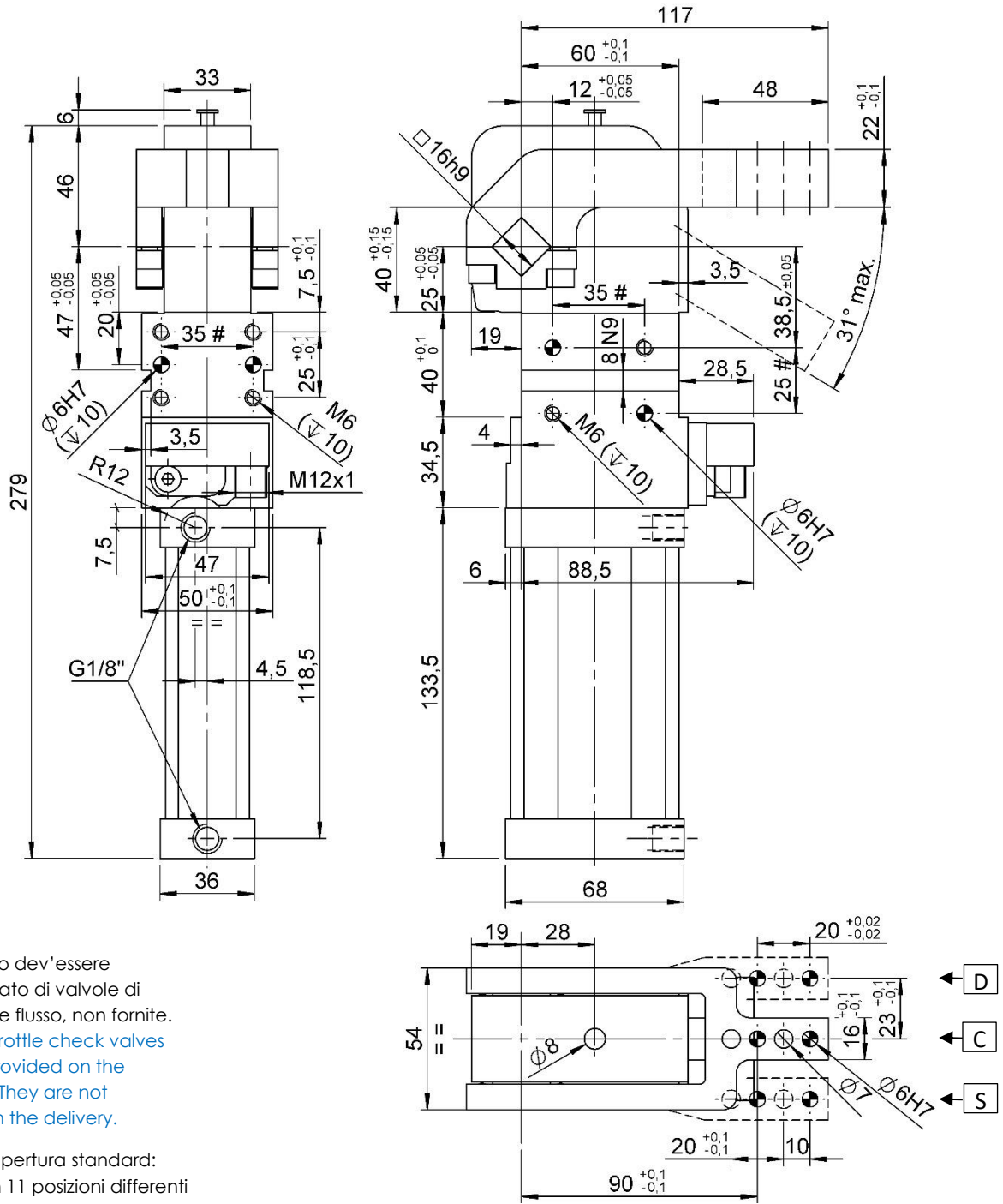
#Tolleranze: fori spina ±0.02, fori filettati ±0.1
#Tolerances: dowel holes ±0.02, screw holes ±0.1

Modello Type	Alesaggio cilindro Cylinder bore	Momento di ritegno Holding moment	Peso Weight	Pressione d'esercizio Working pressure	Coppia max. di bloccaggio Clamping max. torque (5 bar)	Consumo d'aria Air consumption (5 bar)
	[mm]	[Nm]	[Kg]	[bar]	[Nm]	[l]
CPL40 H1...	40	380	~ 2,3	3 – 7	140	~ 1,0



CPL40 V1...S

Chiusura, D.40, Ang. Vario, Leva verticale simmetrica, Offset 15
Clamp, D.40, Vario Op. Angle, Vertical symmetric arm, Offset 15



Il dispositivo dev'essere equipaggiato di valvole di regolazione flusso, non fornite.
External throttle check valves must be provided on the assembly. They are not included in the delivery.

Angoli di apertura standard: settabile in 11 posizioni differenti in un range tra 2° e 31°.
Standard opening angles: settable in 11 different positions in a range between 2° and 31°.

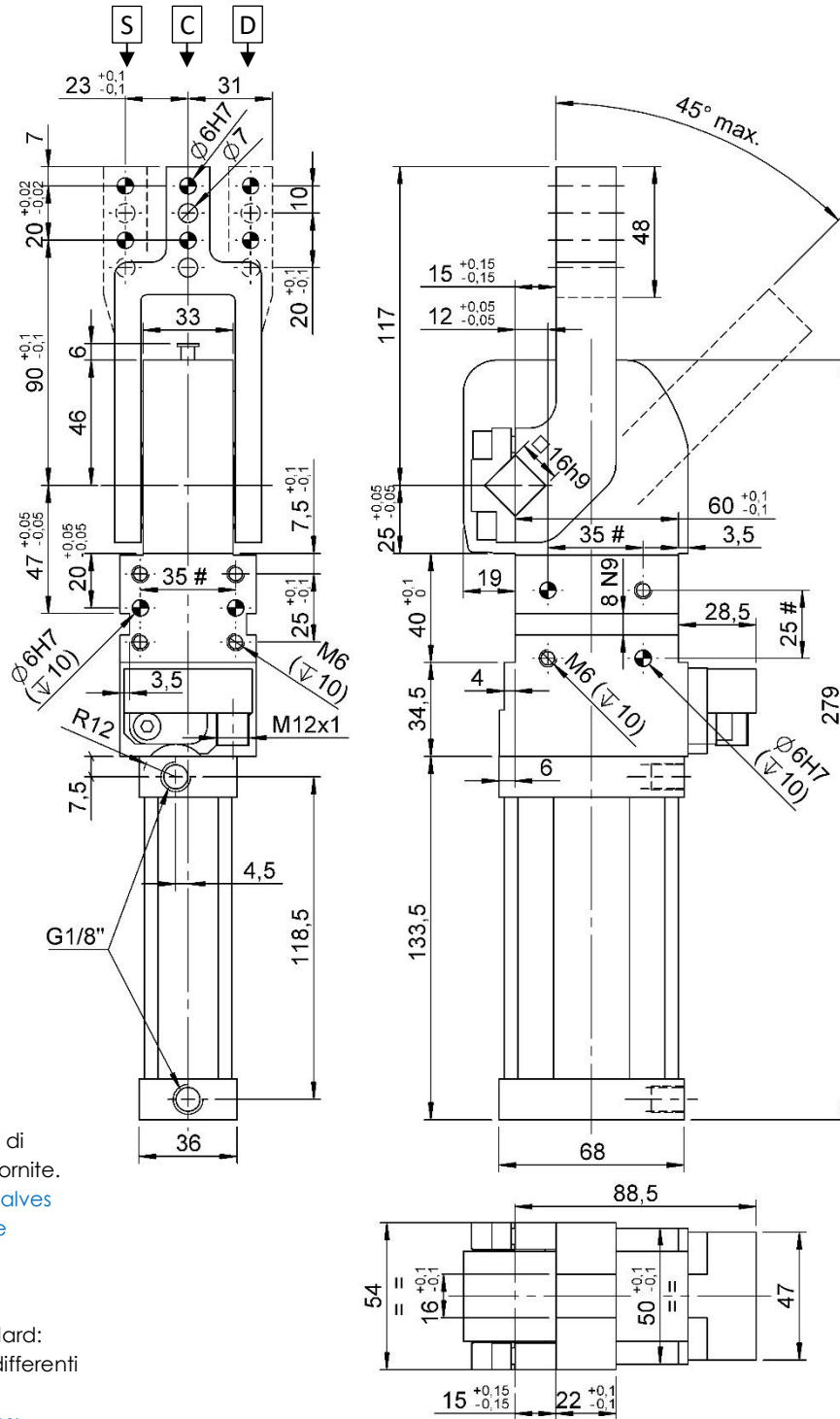
Tolleranze: fori spina: ±0.02 | fori filettati: ±0.1
#Tolerances: dowel holes: ±0.02 | screw holes: ±0.1

Modello Type	Alesaggio cilindro Cylinder bore	Momento di ritegno Holding moment	Peso Weight	Pressione d'esercizio Working pressure	Coppia max. di bloccaggio Clamping max. torque (5 bar)	Consumo d'aria Air consumption (5 bar)
	[mm]	[Nm]	[Kg]	[bar]	[Nm]	[l]
CPL40 V1...S	40	380	~ 2,3	3 – 7	140	~ 0,6



CPL40 H1...S

Chiusura, D.40, Ang. Vario, Leva orizzontale simmetrica, Offset 15
 Clamp, D.40, Vario Op. Angle, Horizontal symmetric arm, Offset 15



Il dispositivo dev'essere equipaggiato di valvole di regolazione flusso, non fornite.
 External throttle check valves must be provided on the assembly. They are not included in the delivery.

Angoli di apertura standard: settabile in 14 posizioni differenti in un range tra 2° e 45°.
 Standard opening angles: settabile in 14 different positions in a range between 2° and 45°.

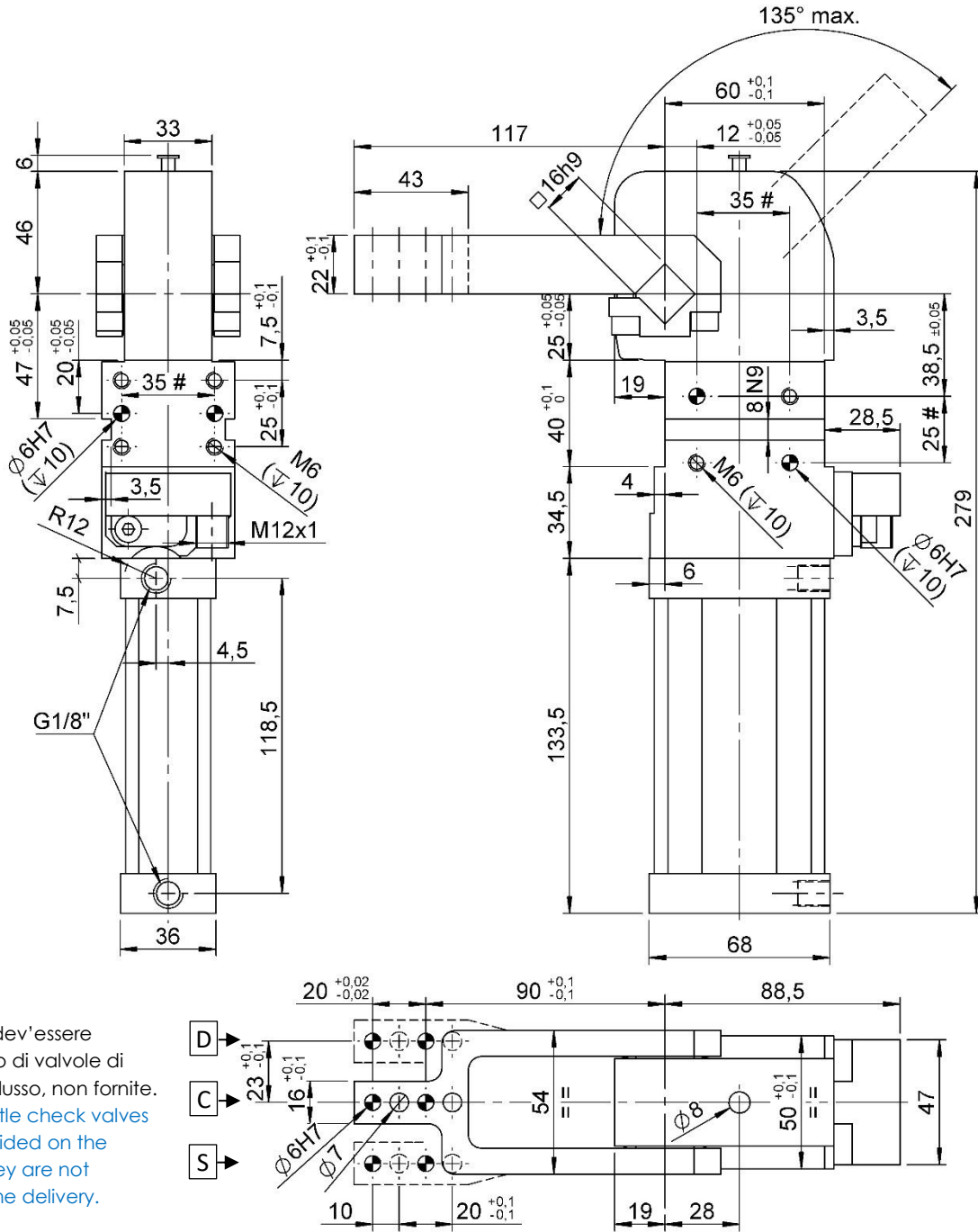
#Tolleranze: fori spina ±0.02, fori filettati ±0.1
 #Tolerances: dowel holes ±0.02, screw holes ±0.1

Modello Type	Alesaggio cilindro Cylinder bore	Momento di ritegno Holding moment	Peso Weight	Pressione d'esercizio Working pressure	Coppia max. di bloccaggio Clamping max. torque (5 bar)	Consumo d'aria Air consumption (5 bar)
	[mm]	[Nm]	[Kg]	[bar]	[Nm]	[l]
CPL40 H1...S	40	380	~ 2,3	3 – 7	140	~ 0,7



CPL40 V2...

Chiusura, D.40, Ang. Vario, Leva verticale, Offset 0
Clamp, D.40, Vario Op. Angle, Vertical arm, Offset 0



Il dispositivo dev'essere equipaggiato di valvole di regolazione flusso, non fornite.
External throttle check valves must be provided on the assembly. They are not included in the delivery.

Angoli di apertura standard:
settabile in 34 posizioni differenti
in un range tra 2° e 135°.
Standard opening angles:
settable in 34 different positions
in a range between 2° and 135°.

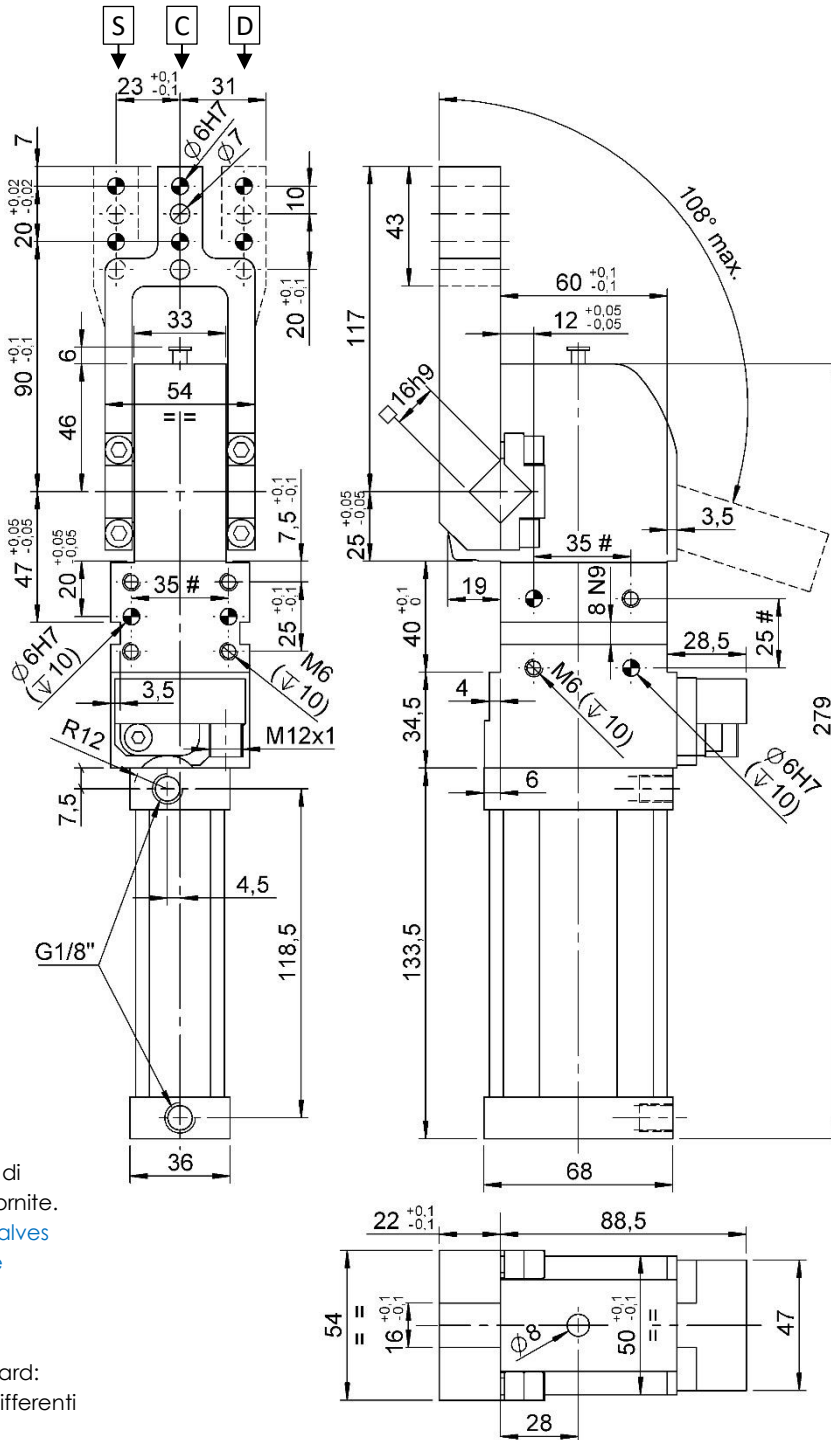
Tolleranze: fori spina ±0.02, fori filettati ±0.1
Tolerances: dowel holes ±0.02, screw holes ±0.1

Modello Type	Alesaggio cilindro Cylinder bore	Momento di ritegno Holding moment	Peso Weight	Pressione d'esercizio Working pressure	Coppia max. di bloccaggio Clamping max. torque (5 bar)	Consumo d'aria Air consumption (5 bar)
	[mm]	[Nm]	[Kg]	[bar]	[Nm]	[l]
CPL40 V2...	40	380	~ 2,2	3 – 7	140	~ 1,0



CPL40 H2...

Chiusura, D.40, Ang. Vario, Leva orizzontale, Offset 0
Clamp, D.40, Vario Op. Angle, Horizontal arm, Offset 0



Il dispositivo dev'essere equipaggiato di valvole di regolazione flusso, non fornite.
External throttle check valves must be provided on the assembly. They are not included in the delivery.

Angoli di apertura standard: settabile in 29 posizioni differenti in un range tra 2° e 108°.
Standard opening angles: settable in 29 different positions in a range between 2° and 108°.

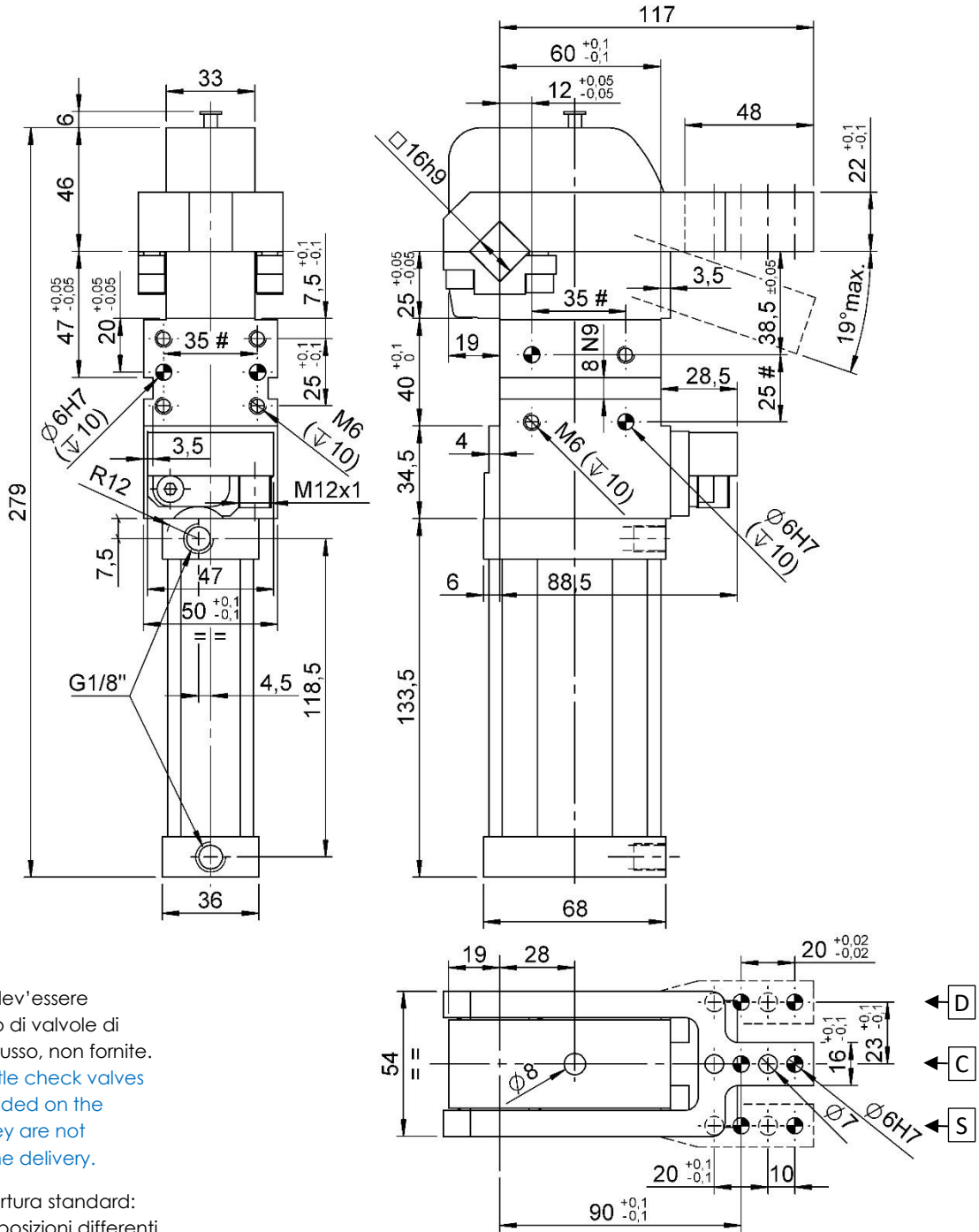
#Tolleranze: fori spina ± 0.02 , fori filettati ± 0.1
#Tolerances: dowel holes ± 0.02 , screw holes ± 0.1

Modello Type	Alesaggio cilindro Cylinder bore	Momento di ritegno Holding moment	Peso Weight	Pressione d'esercizio Working pressure	Coppia max. di bloccaggio Clamping max. torque (5 bar)	Consumo d'aria Air consumption (5 bar)
	[mm]	[Nm]	[Kg]	[bar]	[Nm]	[l]
CPL40 H2...	40	380	~ 2,2	3 – 7	140	~ 1,0



CPL40 V2...S

Chiusura, D.40, Ang. Vario, Leva verticale simmetrica, Offset 0
 Clamp, D.40, Vario Op. Angle, Vertical symmetric arm, Offset 0



Il dispositivo dev'essere equipaggiato di valvole di regolazione flusso, non fornite.
 External throttle check valves must be provided on the assembly. They are not included in the delivery.

Angoli di apertura standard: settabile in 8 posizioni differenti in un range tra 2° e 19°.

Standard opening angles: settable in 8 different positions in a range between 2° and 19°.

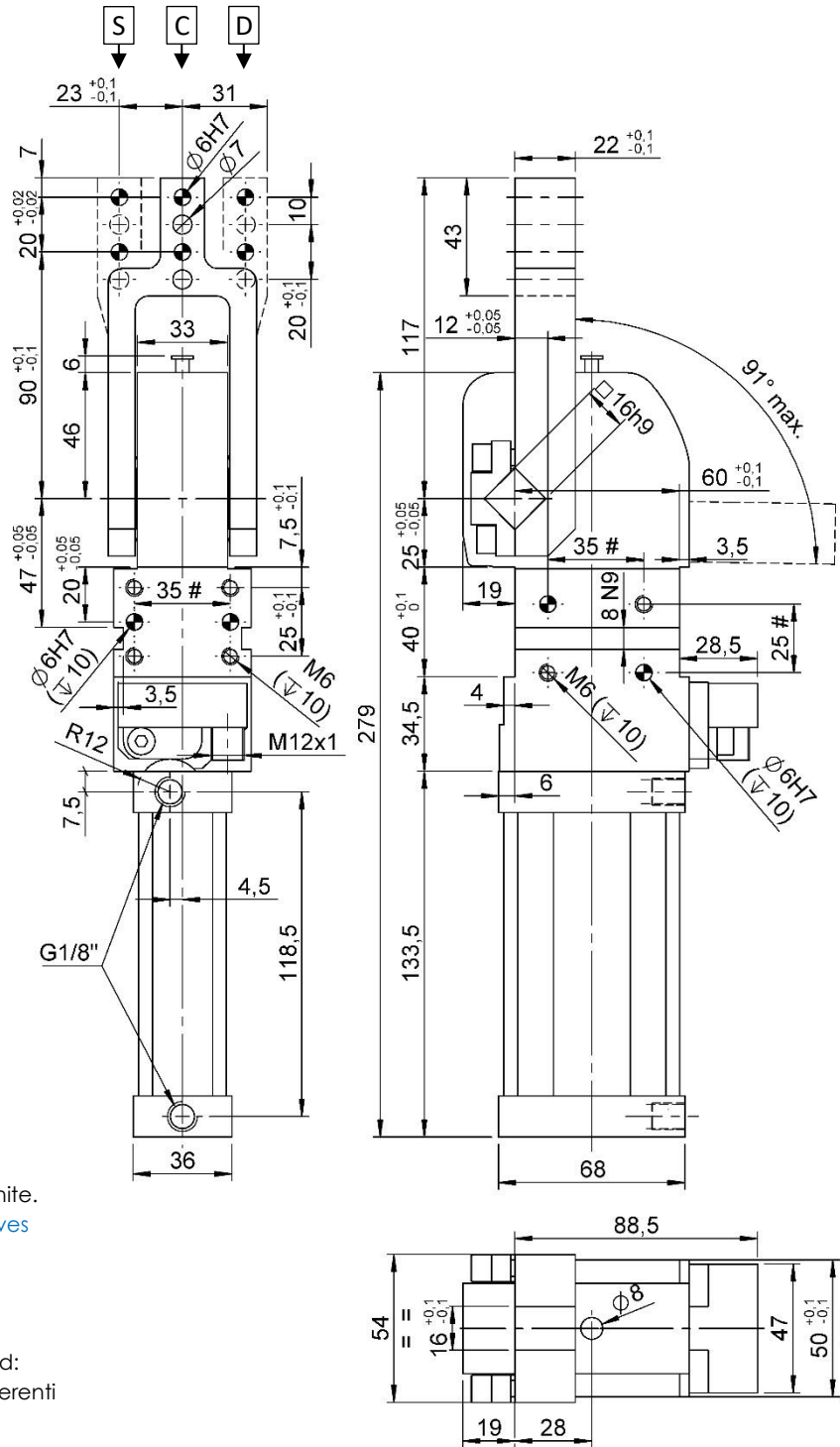
Tolleranze: fori spina: ±0.02 | fori filettati: ±0.1
 #Tolerances: dowel holes: ±0.02 | screw holes: ±0.1

Modello Type	Alesaggio cilindro Cylinder bore	Momento di ritegno Holding moment	Peso Weight	Pressione d'esercizio Working pressure	Coppia max. di bloccaggio Clamping max. torque (5 bar)	Consumo d'aria Air consumption (5 bar)
	[mm]	[Nm]	[Kg]	[bar]	[Nm]	[l]
CPL40 V2...S	40	380	~ 2,2	3 - 7	140	~ 0,6



CPL40 H2...S

Chiusura, D.40, Ang. Vario, Leva orizzontale simmetrica, Offset 0
Clamp, D.40, Vario Op. Angle, Horizontal symmetric arm, Offset 0



Il dispositivo dev'essere equipaggiato di valvole di regolazione flusso, non fornite. External throttle check valves must be provided on the assembly. They are not included in the delivery.

Angoli di apertura standard: settabile in 25 posizioni differenti in un range tra 2° e 91°. Standard opening angles: settabile in 25 different positions in a range between 2° and 91°.

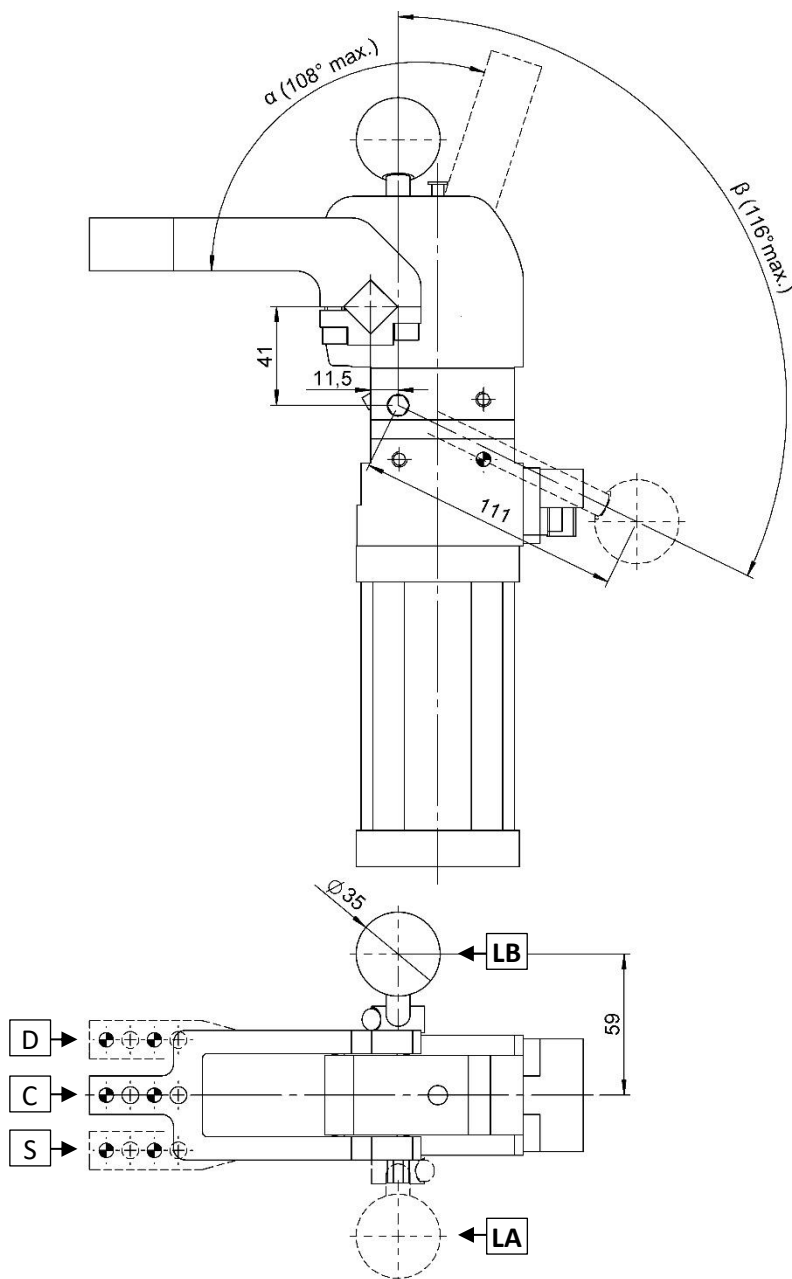
#Tolleranze: fori spina ± 0.02 , fori filettati ± 0.1
#Tolerances: dowel holes ± 0.02 , screw holes ± 0.1

Modello Type	Alesaggio cilindro Cylinder bore	Momento di ritegno Holding moment	Peso Weight	Pressione d'esercizio Working pressure	Coppia max. di bloccaggio Clamping max. torque (5 bar)	Consumo d'aria Air consumption (5 bar)
	[mm]	[Nm]	[Kg]	[bar]	[Nm]	[l]
CPL40 V2...S	40	380	~ 2,2	3 – 7	140	~ 0,8



CPLM40L...V1...

Chiusura, D.40, Ang. Vario, Cmd. Manuale, Leva Vert, Offset 15
Clamp, D.40, Vario Op. Angle, Hand Lever, Vert. arm, Offset 15



α	16°	31°	45°	61°	74°	91°	103°	108°
β	41°	54°	63°	75°	84°	99°	111°	116°

Leva comando manuale orientabile ad intervalli di 60°
Manual control adjustable in steps of 60°

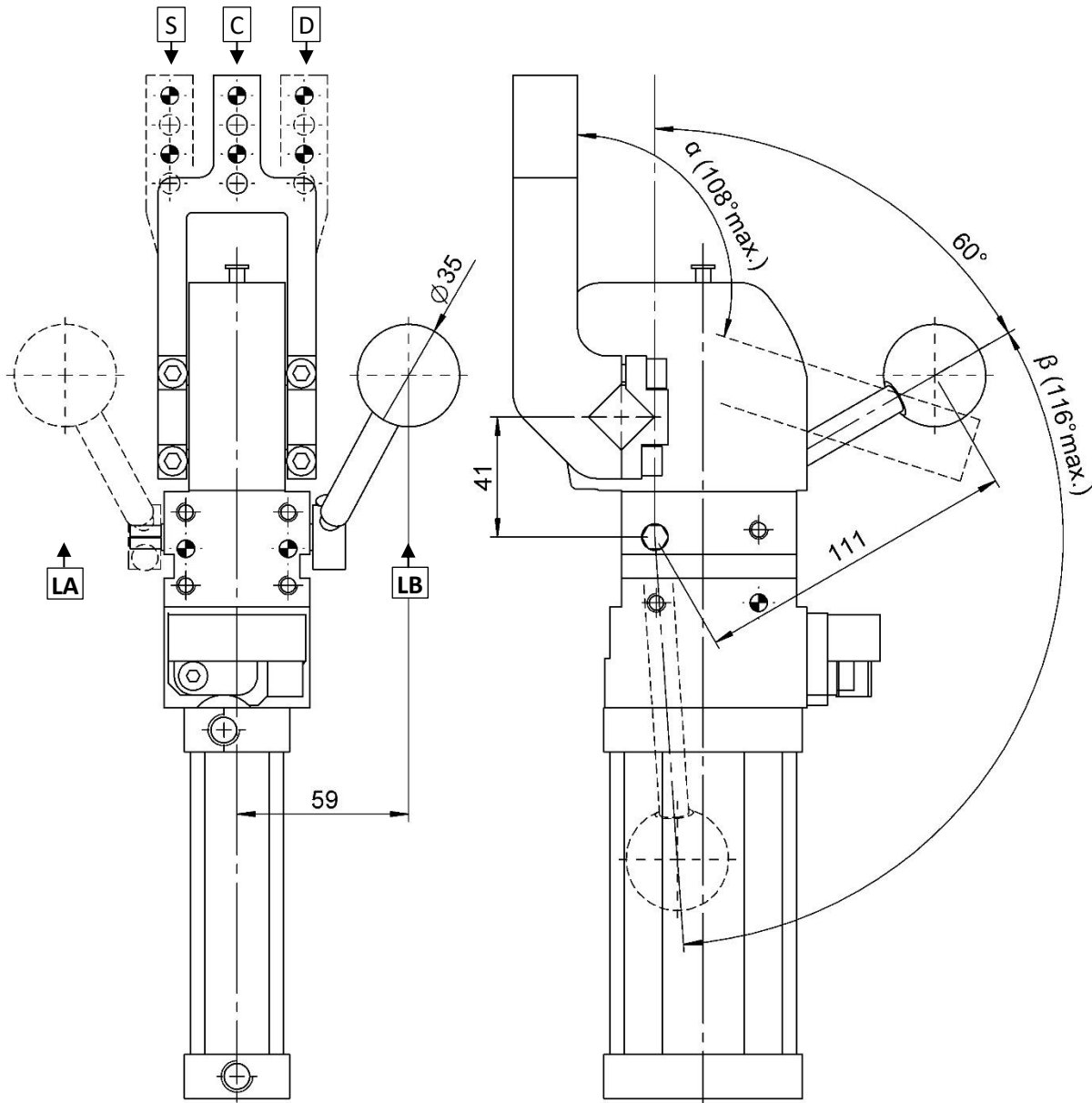
#Tolleranze: fori spina ±0.02, fori filettati ±0.1
#Tolerances: dowel holes ±0.02, screw holes ±0.1

Modello Type	Alesaggio cilindro Cylinder bore	Momento di ritegno Holding moment	Peso Weight	Pressione d'esercizio Working pressure	Max. forza manuale applicabile Max. manual force
	[mm]	[Nm]	[Kg]	[bar]	[N]
CPLM40L...V1...	40	380	~ 2,6	3 - 7	200



CPLM40L...H1...

Chiusura, D.40, Ang. Vario, Cmd. Manuale, Leva Orizz., Offset 15
 Clamp, D.40, Vario Op. Angle, Hand Lever, Horiz. Arm, Offset 15



α	16°	31°	45°	61°	74°	91°	108°
β	41°	54°	63°	75°	84°	99°	116°

Leva comando manuale orientabile ad intervalli di 60°
 Manual control adjustable in steps of 60°

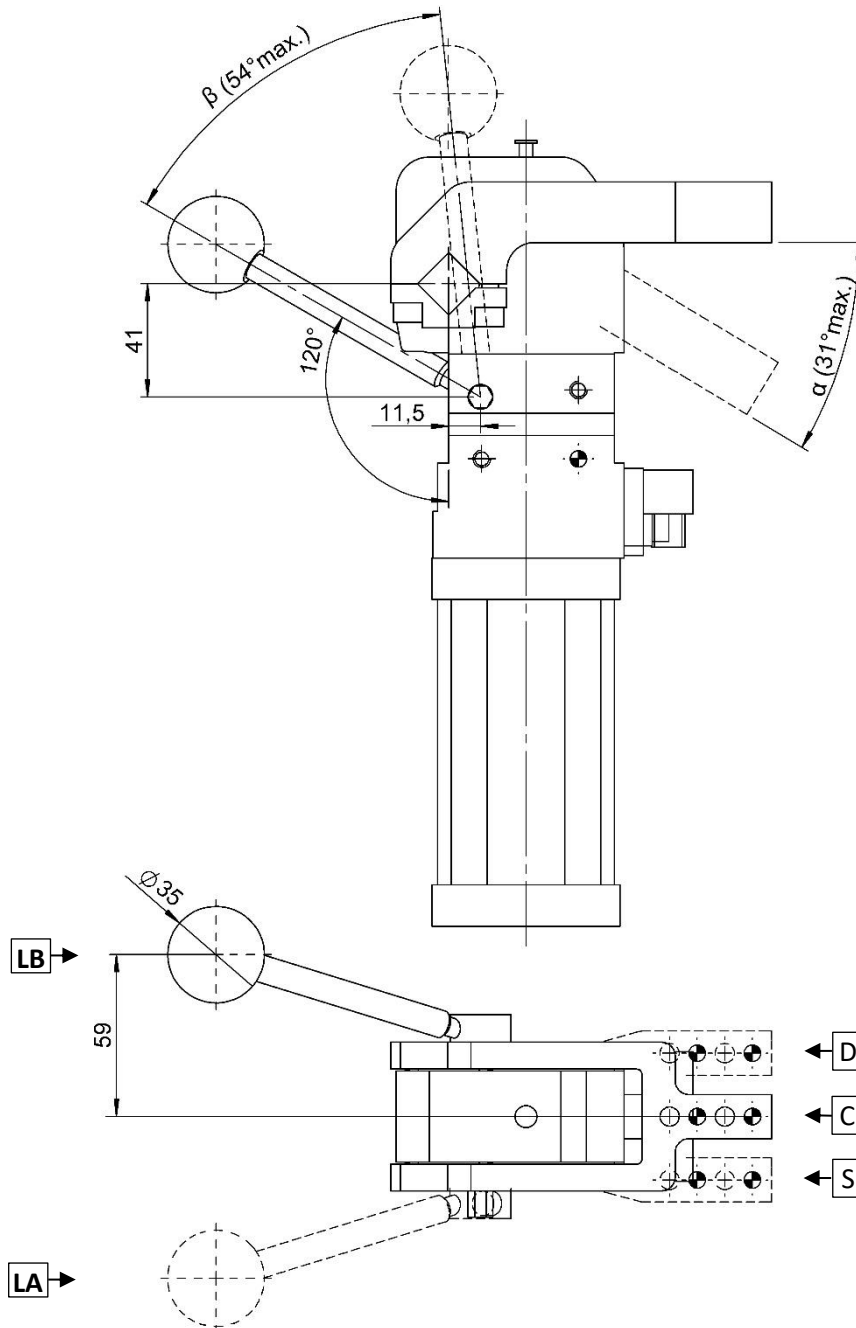
#Tolleranze: fori spina ± 0.02 , fori filettati ± 0.1
 #Tolerances: dowel holes ± 0.02 , screw holes ± 0.1

Modello Type	Alesaggio cilindro Cylinder bore	Momento di ritegno Holding moment	Peso Weight	Pressione d'esercizio Working pressure	Max. forza manuale applicabile Max. manual force
	[mm]	[Nm]	[Kg]	[bar]	[N]
CPLM40L...H1...	40	380	~ 2,6	3 - 7	200



CPLM40L...V1...S

Chiusura, D.40, Ang. Vario, Cmd. Manuale, Vert. Sim., Offset 15
 Clamp, D.40, Vario Op. Angle, Hand Lever, Vert. Sym., Offset 15



α	16°	31°
β	41°	54°

Leva comando manuale orientabile ad intervalli di 60°
 Manual control adjustable in steps of 60°

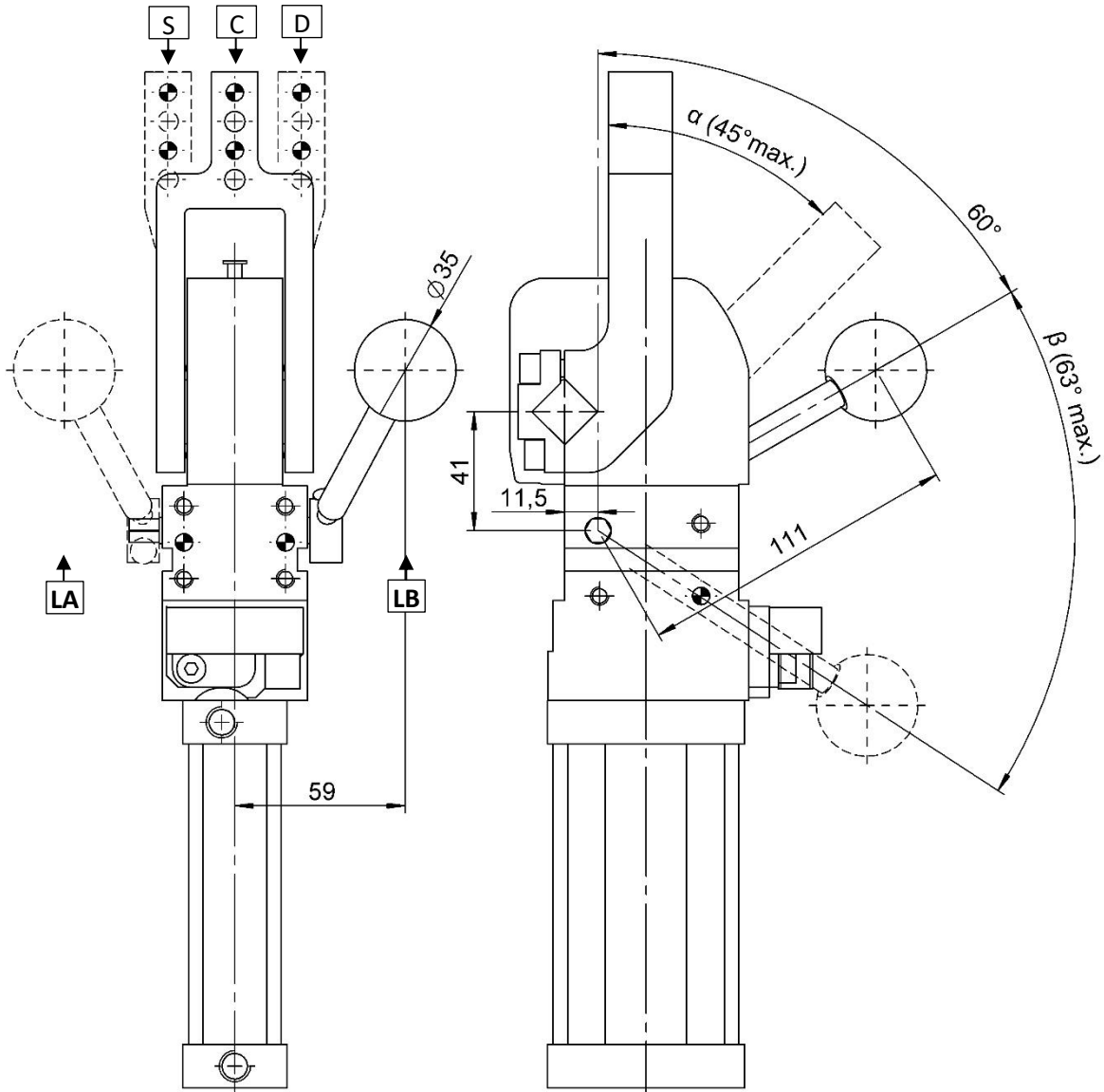
#Tolleranze: fori spina ± 0.02 , fori filettati ± 0.1
 #Tolerances: dowel holes ± 0.02 , screw holes ± 0.1

Modello Type	Alesaggio cilindro Cylinder bore	Momento di ritegno Holding moment	Peso Weight	Pressione d'esercizio Working pressure	Max. forza manuale applicabile Max. manual force
	[mm]	[Nm]	[Kg]	[bar]	[N]
CPLM40L...V1...S	40	380	~ 2,6	3 - 7	200



CPLM40L...H1...S

Chiusura, D.40, Ang. Vario, Cmd. Manuale, Orizz. Sim., Offset 15
 Clamp, D.40, Vario Op. Angle, Hand Lever, Horiz. Sym., Offset 15



α	16°	31°	45°
β	41°	54°	63°

Leva comando manuale orientabile ad intervalli di 60°
 Manual control adjustable in steps of 60°

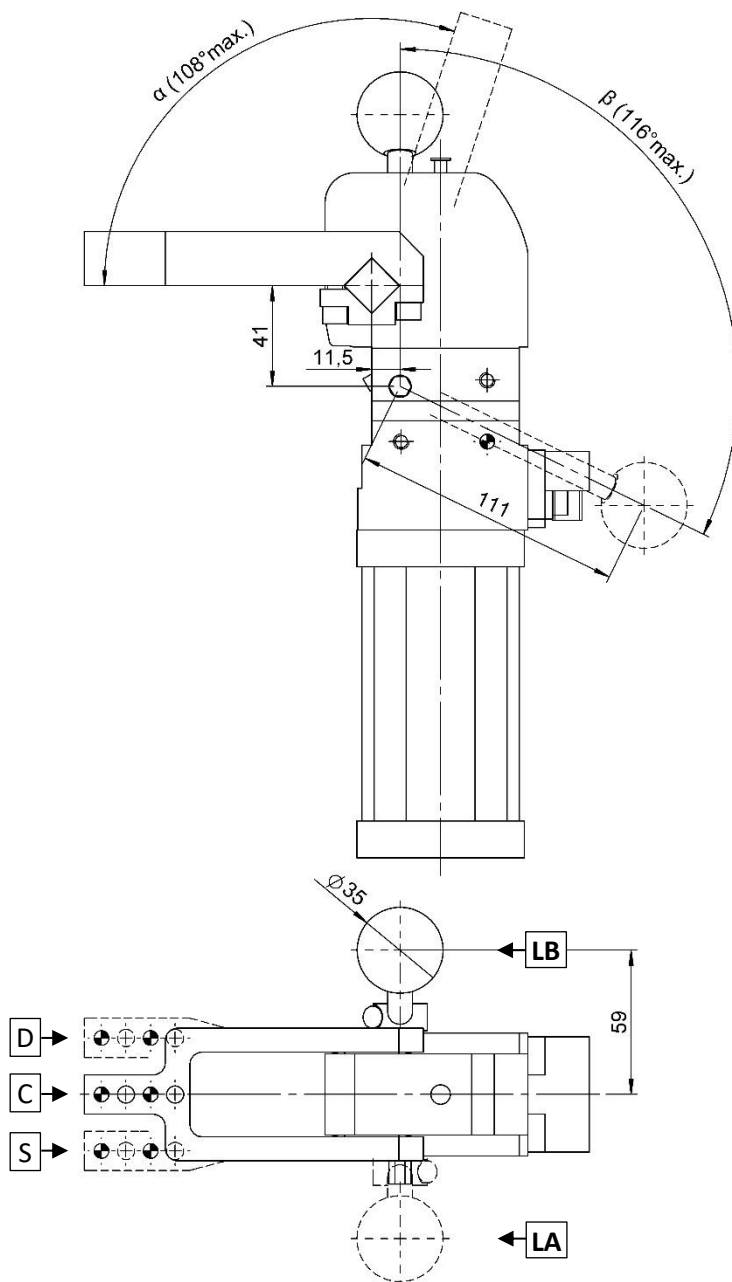
#Tolleranze: fori spina ±0.02, fori filettati ±0.1
 #Tolerances: dowel holes ±0.02, screw holes ±0.1

Modello Type	Alesaggio cilindro Cylinder bore	Momento di ritegno Holding moment	Peso Weight	Pressione d'esercizio Working pressure	Max. forza manuale applicabile Max. manual force
	[mm]	[Nm]	[Kg]	[bar]	[N]
CPLM40L...H1...S	40	380	~ 2,6	3 - 7	200



CPLM40L...V2...

Chiusura, D.40, Ang. Vario, Cmd. Manuale, Leva Vert, Offset 0
 Clamp, D.40, Vario Op. Angle, Hand Lever, Vert. arm, Offset 0



α	16°	31°	45°	61°	74°	91°	108°
β	41°	54°	63°	75°	84°	99°	116°

Leva comando manuale orientabile ad intervalli di 60°
 Manual control adjustable in steps of 60°

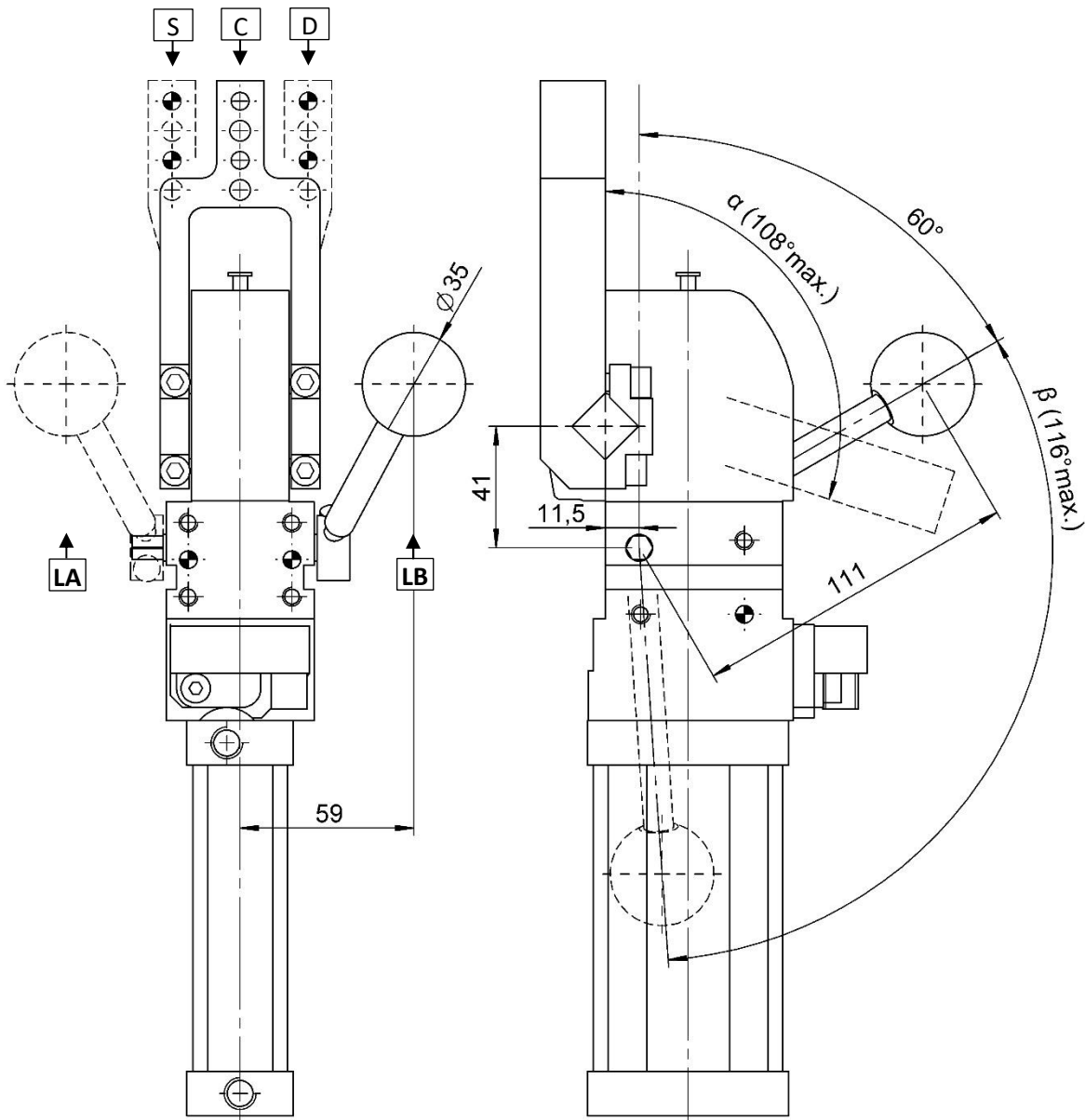
#Tolleranze: fori spina ±0.02, fori filettati ±0.1
 #Tolerances: dowel holes ±0.02, screw holes ±0.1

Modello Type	Alesaggio cilindro Cylinder bore	Momento di ritegno Holding moment	Peso Weight	Pressione d'esercizio Working pressure	Max. forza manuale applicabile Max. manual force
	[mm]	[Nm]	[Kg]	[bar]	[N]
CPLM40L...V2...	40	380	~ 2.5	3 - 7	200



CPLM40L...H2...

Chiusura, D.40, Ang. Vario, Cmd. Manuale, Leva Orizz., Offset 0
 Clamp, D.40, Vario Op. Angle, Hand Lever, Horiz. Arm, Offset 0



α	16°	31°	45°	61°	74°	91°	108°
β	41°	54°	63°	75°	84°	99°	116°

Leva comando manuale orientabile ad intervalli di 60°
 Manual control adjustable in steps of 60°

#Tolleranze: fori spina ± 0.02 , fori filettati ± 0.1

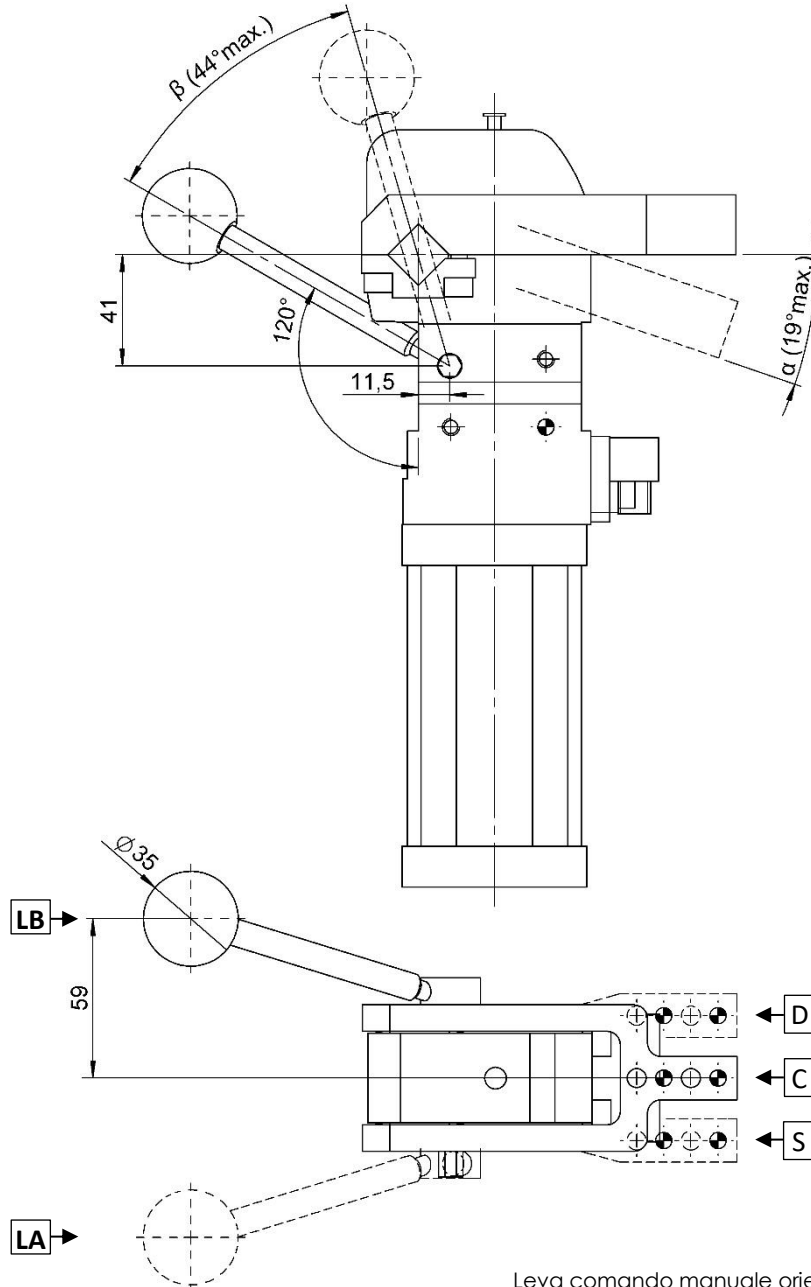
#Tolerances: dowel holes ± 0.02 , screw holes ± 0.1

Modello Type	Alesaggio cilindro Cylinder bore	Momento di ritengo Holding moment	Peso Weight	Pressione d'esercizio Working pressure	Max. forza manuale applicabile Max. manual force
	[mm]	[Nm]	[Kg]	[bar]	[N]
CPLM40L...H2...	40	380	~ 2.5	3 - 7	200



CPLM40L...V2...S

Chiusura, D.40, Ang. Vario, Cmd. Manuale, Vert. Sim., Offset 0
 Clamp, D.40, Vario Op. Angle, Hand Lever, Vert. Sym., Offset 0



α	19°
β	44°

Leva comando manuale orientabile ad intervalli di 60°
 Manual control adjustable in steps of 60°

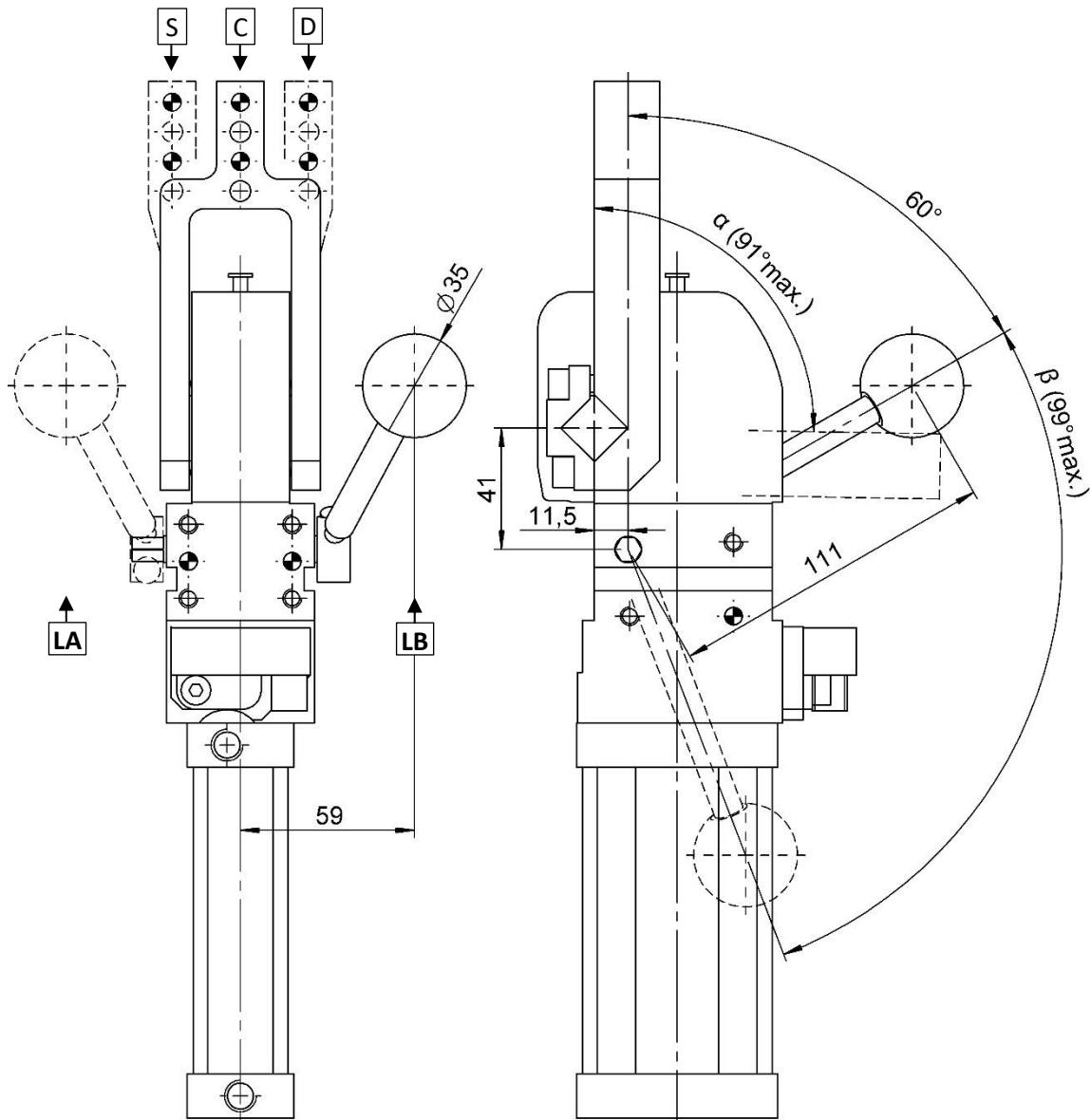
#Tolleranze: fori spina ± 0.02 , fori filettati ± 0.1
 #Tolerances: dowel holes ± 0.02 , screw holes ± 0.1

Modello Type	Alesaggio cilindro Cylinder bore	Momento di ritegno Holding moment	Peso Weight	Pressione d'esercizio Working pressure	Max. forza manuale applicabile Max. manual force
	[mm]	[Nm]	[Kg]	[bar]	[N]
CPLM40L...V2...S	40	380	~ 2.5	3 - 7	200



CPLM40L...H2...S

Chiusura, D.40, Ang. Vario, Cmd. Manuale, Orizz. Sim., Offset 0
 Clamp, D.40, Vario Op. Angle, Hand Lever, Horiz. Sym., Offset 0



α	16°	31°	45°	61°	74°	91°
β	41°	54°	63°	75°	84°	99°

Leva comando manuale orientabile ad intervalli di 60°
 Manual control adjustable in steps of 60°

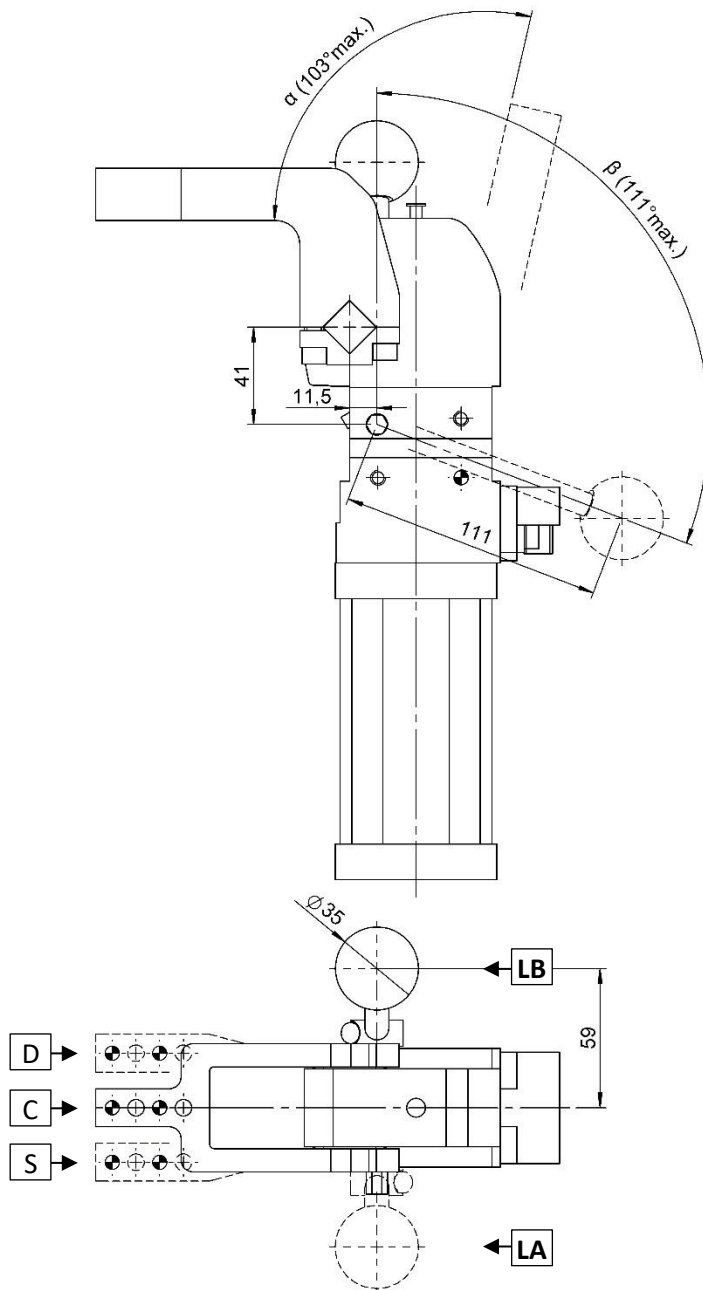
#Tolleranze: fori spina ±0.02, fori filettati ±0.1
 #Tolerances: dowel holes ±0.02, screw holes ±0.1

Modello Type	Alesaggio cilindro Cylinder bore	Momento di ritengo Holding moment	Peso Weight	Pressione d'esercizio Working pressure	Max. forza manuale applicabile Max. manual force
	[mm]	[Nm]	[Kg]	[bar]	[N]
CPLM40L...H2...S	40	380	~ 2.5	3 - 7	200



CPLM40L...V3...

Chiusura, D.40, Ang. Vario, Cmd. Manuale, Leva Vert, Offset 45
 Clamp, D.40, Vario Op. Angle, Hand Lever, Vert. arm, Offset 45



α	16°	31°	45°	61°	74°	91°	103°
β	41°	54°	63°	75°	84°	99°	111°

Leva comando manuale orientabile ad intervalli di 60°
 Manual control adjustable in steps of 60°

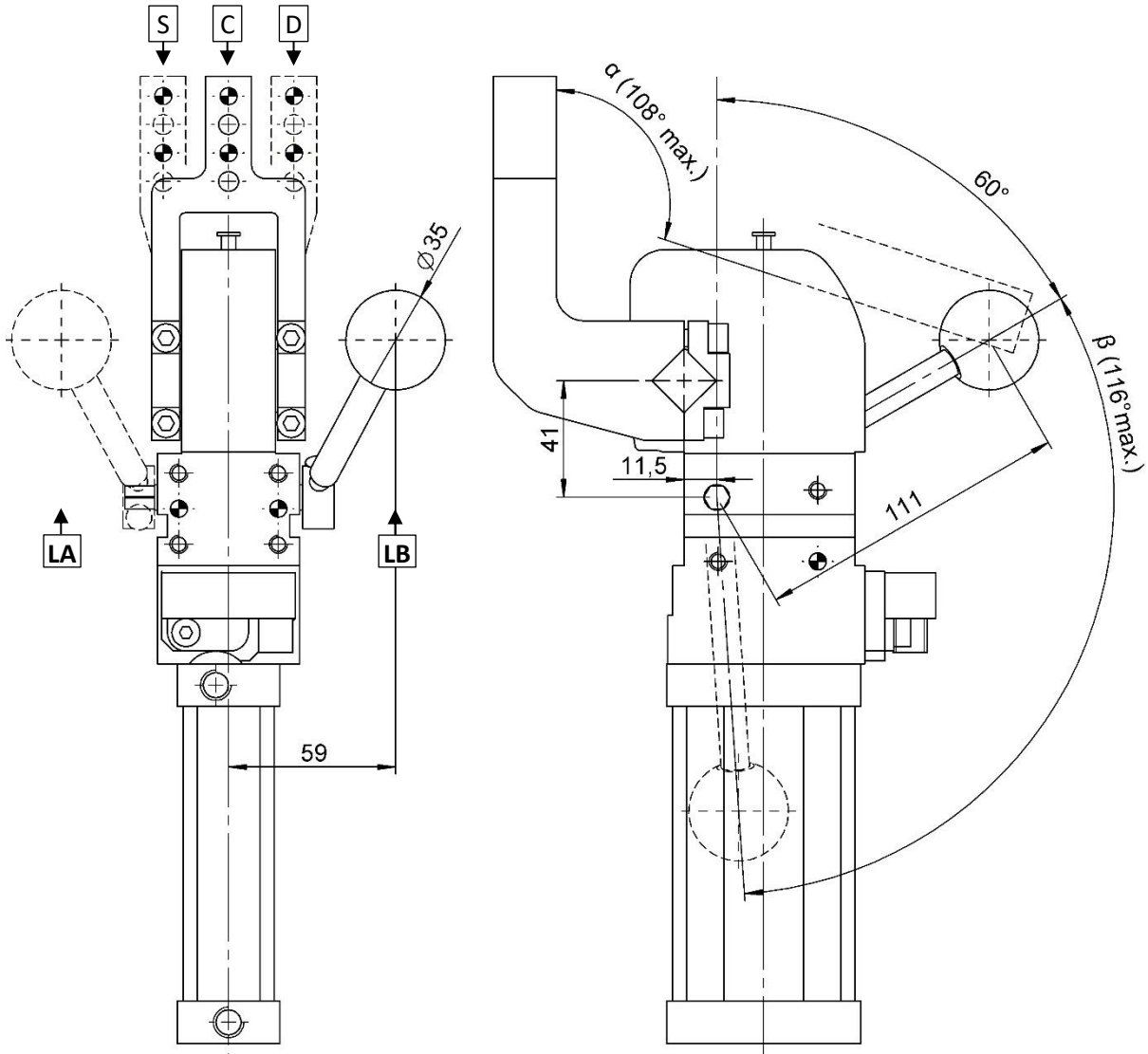
#Tolleranze: fori spina ±0.02, fori filettati ±0.1
 #Tolerances: dowel holes ±0.02, screw holes ±0.1

Modello Type	Alesaggio cilindro Cylinder bore	Momento di ritegno Holding moment	Peso Weight	Pressione d'esercizio Working pressure	Max. forza manuale applicabile Max. manual force
	[mm]	[Nm]	[Kg]	[bar]	[N]
CPLM40L...V3...	40	380	~ 2.7	3 - 7	200



CPLM40L...H3...

Chiusura, D.40, Ang. Vario, Cmd. Manuale, Leva Orizz., Offset 45
 Clamp, D.40, Vario Op. Angle, Hand Lever, Horiz. Arm, Offset 45



α	16°	31°	45°	61°	74°	91°	108°
β	41°	54°	63°	75°	84°	99°	116°

Leva comando manuale orientabile ad intervalli di 60°
 Manual control adjustable in steps of 60°

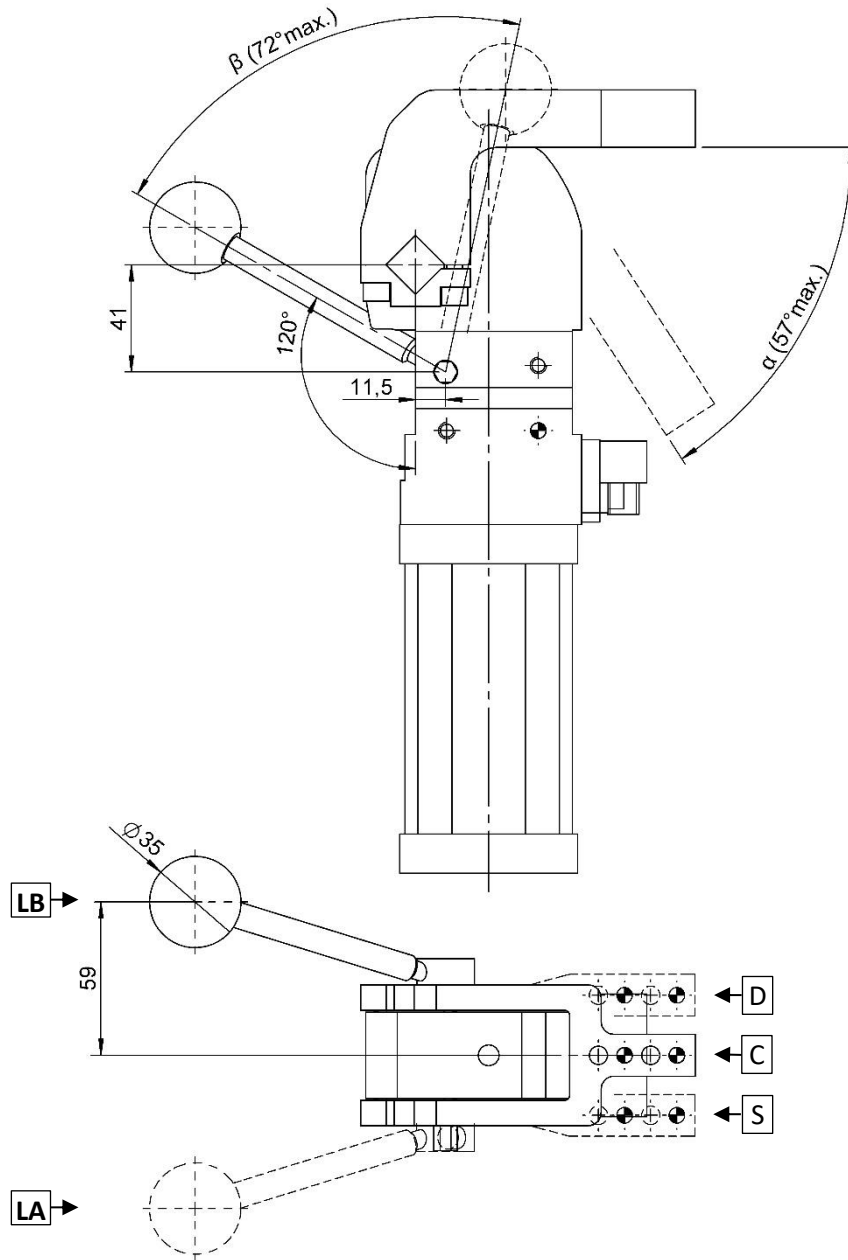
#Tolleranze: fori spina ± 0.02 , fori filettati ± 0.1
 #Tolerances: dowel holes ± 0.02 , screw holes ± 0.1

Modello Type	Alesaggio cilindro Cylinder bore	Momento di ritegno Holding moment	Peso Weight	Pressione d'esercizio Working pressure	Max. forza manuale applicabile Max. manual force
	[mm]	[Nm]	[Kg]	[bar]	[N]
CPLM40L...H3...	40	380	~ 2.7	3 - 7	200



CPLM40L...V3...S

Chiusura, D.40, Ang. Vario, Cmd. Manuale, Vert. Sim., Offset 45
 Clamp, D.40, Vario Op. Angle, Hand Lever, Vert. Sym., Offset 45



α	16°	31°	45°	57°
β	41°	54°	63°	72°

Leva comando manuale orientabile ad intervalli di 60°
 Manual control adjustable in steps of 60°

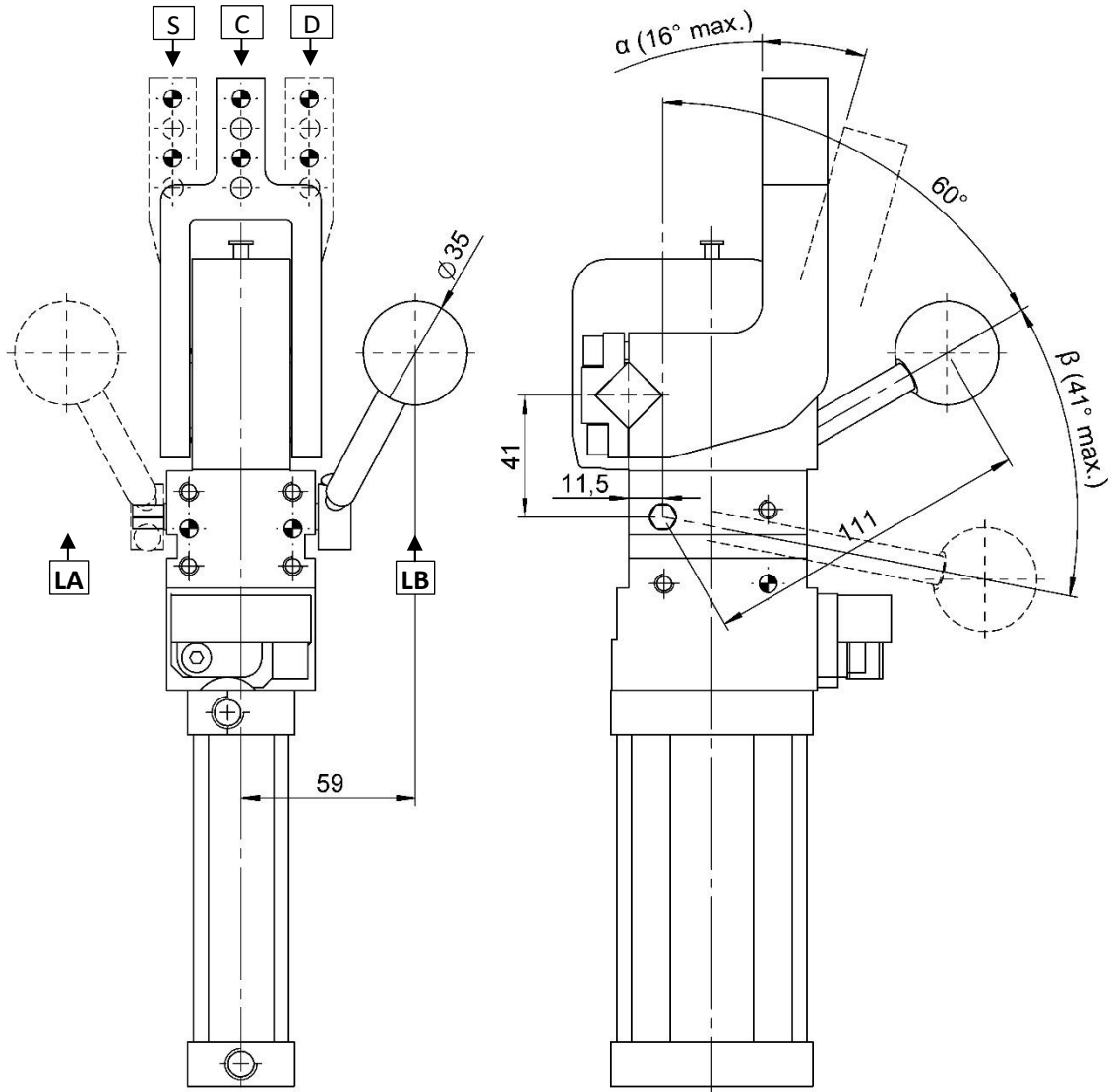
#Tolleranze: fori spina ± 0.02 , fori filettati ± 0.1
 #Tolerances: dowel holes ± 0.02 , screw holes ± 0.1

Modello Type	Alesaggio cilindro Cylinder bore	Momento di ritegno Holding moment	Peso Weight	Pressione d'esercizio Working pressure	Max. forza manuale applicabile Max. manual force
	[mm]	[Nm]	[Kg]	[bar]	[N]
CPLM40L...V3...S	40	380	~ 2.7	3 - 7	200



CPLM40L...H3...S

Chiusura, D.40, Ang. Vario, Cmd. Manuale, Orizz. Sim., Offset 45
 Clamp, D.40, Vario Op. Angle, Hand Lever, Horiz. Sym., Offset 45



α	16°
β	41°

Leva comando manuale orientabile ad intervalli di 60°
 Manual control adjustable in steps of 60°

#Tolleranze: fori spina ± 0.02 , fori filettati ± 0.1
 #Tolerances: dowel holes ± 0.02 , screw holes ± 0.1

Modello Type	Alesaggio cilindro Cylinder bore	Momento di ritegno Holding moment	Peso Weight	Pressione d'esercizio Working pressure	Max. forza manuale applicabile Max. manual force
	[mm]	[Nm]	[Kg]	[bar]	[N]
CPLM40L...H3...S	40	380	~ 2.7	3 - 7	200

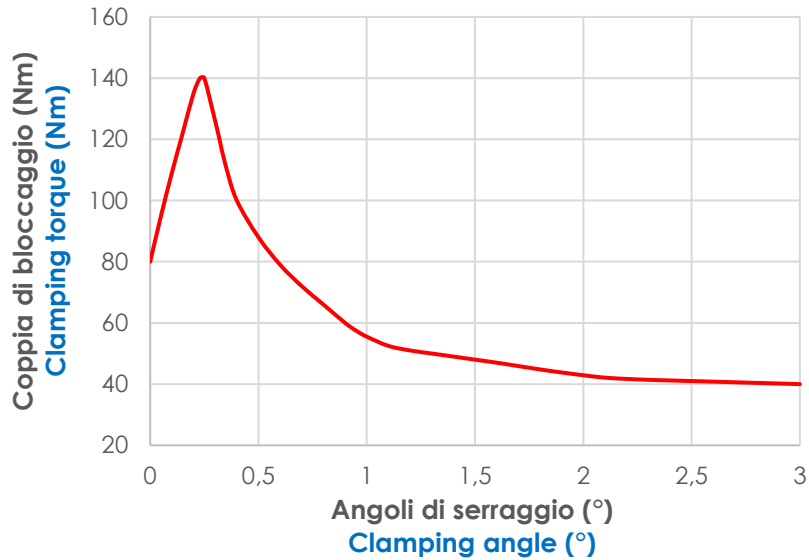


Diagrammi.

Diagrams.

Coppia di bloccaggio (Nm)

Clamping torque (Nm)

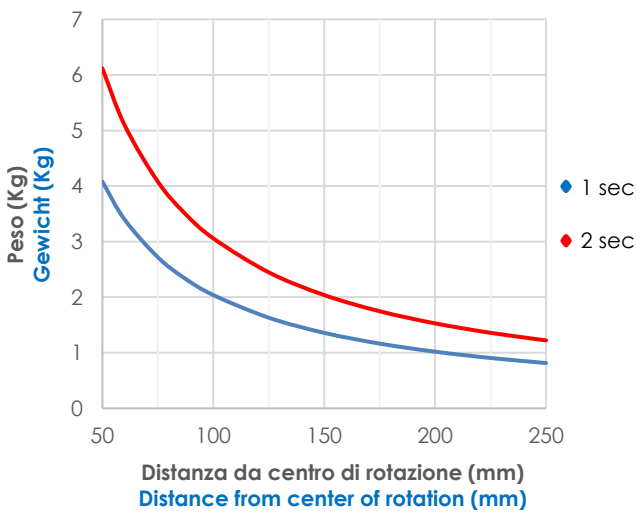


Coppia max. di bloccaggio (5 bar): **140 Nm.**

Max. clamping torque (5 bar): **140 Nm.**

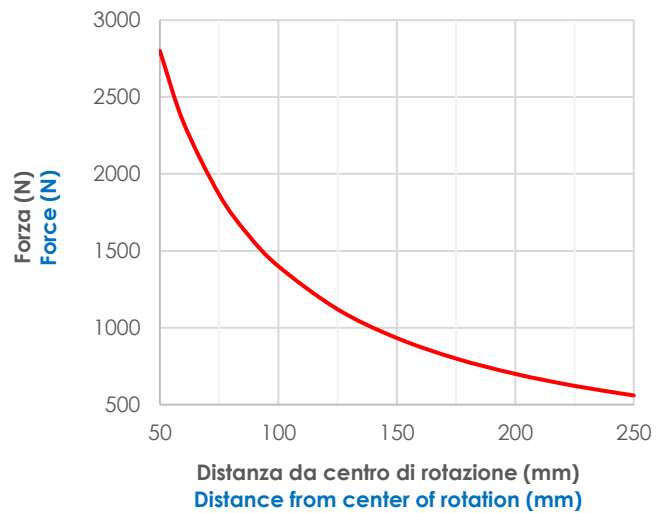
Carico max. applicabile alla leva (Kg) a 5 bar.

Max. load applicable on the arm (Kg) at 5 bar.



Forza max. esercitata (N) a 5 bar.

Max. force applied (N) at 5 bar.



Modello Type	Coppia max. dal peso Max. torque By weight [Nm]		Coppia max. con tassello fuori asse The max torque for applications with the load out of axis [Nm]	
	1 sec	2 sec	1 sec	2 sec
CPL 40	2.0	3.0	1.6	2.4



Schema Finecorsa induttivo M12 (cod. 09538/.../C).

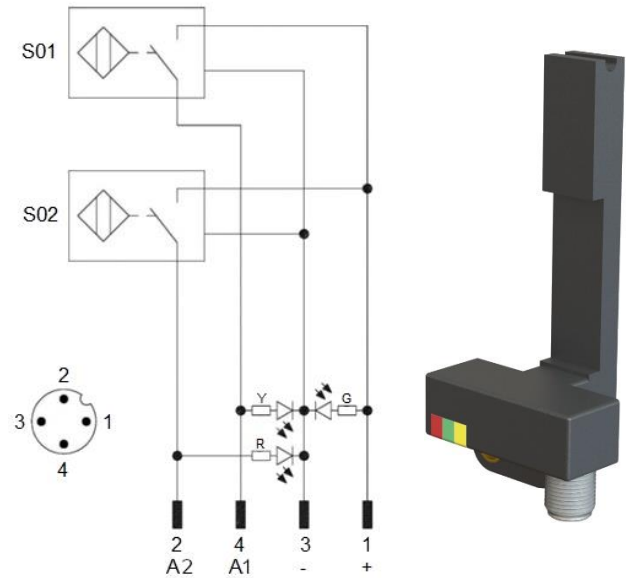
Diagram for M12 inductive proximity switch (cod. 09538/.../C).

Caratteristiche tecniche:

- Tipo di uscita: PNP;
- Tensione d'alimentazione: 10-30 VDC;
- Corrente max. di commutazione: 150 mA;
- Consumo di corrente: < 20 mA;
- Calo di tensione: < 1,8 V
- Campo di temperatura: -25° / 70° C.

Technical data:

- Output type: PNP;
- Feeding voltage: 10-30 VDC;
- Max. commutating current: 150 mA;
- Power supply: < 20 mA;
- Voltage drop: < 1,8 V;
- Temperature range: -25° / 70° C.



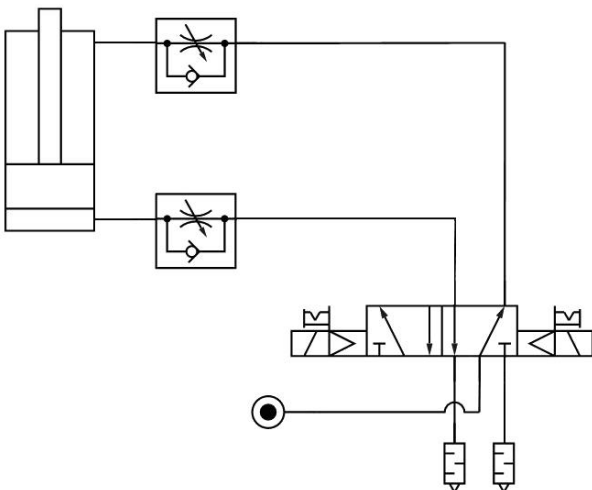
S01 = segnale d'apertura
 S01 = opening signal
 S02 = segnale di chiusura
 S02 = closing signal

Y = LED giallo / yellow LED
 G = LED verde / green LED
 R = LED rosso / red LED

1 = filo marrone / brown wire
 2 = filo nero / black wire
 3 = filo blu / blue wire
 4 = filo bianco / white wire

Schema pneumatico.

Pneumatic plan.



cilindro pneumatico pneumatic cylinder	pos. chiusura closed pos.						
	pos.apertura open pos.						
segnale pos. apertura open pos. signal	1						
	0						
segnale pos. chiusura closed pos. signal	1						
	0						



Istruzioni operative.

Operating instructions.

Modifica angolo d'apertura.

- Portare la leva in posizione di apertura. Svitare vite M6 e rimuovere amplificatore (Imm. 1)
- Svitare il grano M5 sottostante al sensore induttivo; (Imm. 2)
- Inserire nel foro una chiave con Ø max. di 4mm, e spingere la molla applicando una forza ≥ 100 N; (Imm. 3)
- Mantenere la spinta sulla molla e spostare manualmente la leva nella posizione desiderata;
- Rilasciare il sistema a molla per permettere l'aggancio automatico dei componenti.

Opening angle change.

- Bring the clamp in the opening position; Unscrew the M6 screw and remove the amplifier (Image 1)
- Unscrew the M5 socket screw below the inductive sensor; (Image 2)
- Put a key with Ø max. 4 mm into the hole, and push the spring applying a force ≥ 100 N; (Image 3)
- Keep pushing on the spring and move the clamp arm manually to the desired position;
- Release the spring to allow the automatic coupling of the components.

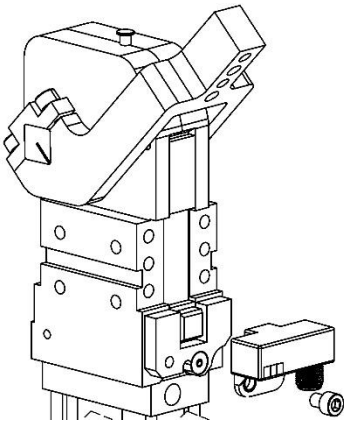


Immagine 1
Image 1

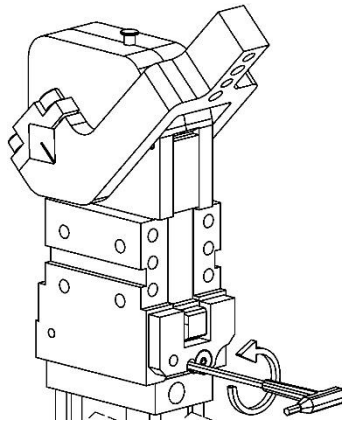


Immagine 2
Image 2

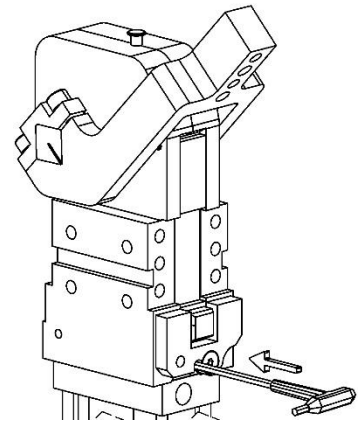


Immagine 3
Image 3

Angoli d'apertura.

Opening angle.

Tipo Type	Angoli d'apertura CPL40 / Opening angles CPL40																																					
	2	4	6	8	10	13	16	19	23	27	31	35	39	45	48	53	57	61	66	70	74	79	83	87	91	95	99	103	108	112	117	122	127	135				
V1...	•	•	•	•	•	•	•	•	•	•	•	•	•	•	•	•	•	•	•	•	•	•	•	•	•	•	•	•	•	•	•	•	•	•	•	•		
H1...	•	•	•	•	•	•	•	•	•	•	•	•	•	•	•	•	•	•	•	•	•	•	•	•	•	•	•	•	•	•	•	•	•	•	•	•		
V1...S	•	•	•	•	•	•	•	•	•	•	•	•	•	•	•	•	•	•	•	•	•	•	•	•	•	•	•	•	•	•	•	•	•	•	•	•		
H1...S	•	•	•	•	•	•	•	•	•	•	•	•	•	•	•	•	•	•	•	•	•	•	•	•	•	•	•	•	•	•	•	•	•	•	•	•	•	
V2...	•	•	•	•	•	•	•	•	•	•	•	•	•	•	•	•	•	•	•	•	•	•	•	•	•	•	•	•	•	•	•	•	•	•	•	•	•	
H2...	•	•	•	•	•	•	•	•	•	•	•	•	•	•	•	•	•	•	•	•	•	•	•	•	•	•	•	•	•	•	•	•	•	•	•	•	•	
V2...S	•	•	•	•	•	•	•	•	•	•	•	•	•	•	•	•	•	•	•	•	•	•	•	•	•	•	•	•	•	•	•	•	•	•	•	•	•	
H2...S	•	•	•	•	•	•	•	•	•	•	•	•	•	•	•	•	•	•	•	•	•	•	•	•	•	•	•	•	•	•	•	•	•	•	•	•	•	
V3...	•	•	•	•	•	•	•	•	•	•	•	•	•	•	•	•	•	•	•	•	•	•	•	•	•	•	•	•	•	•	•	•	•	•	•	•	•	
H3...	•	•	•	•	•	•	•	•	•	•	•	•	•	•	•	•	•	•	•	•	•	•	•	•	•	•	•	•	•	•	•	•	•	•	•	•	•	
V3...S	•	•	•	•	•	•	•	•	•	•	•	•	•	•	•	•	•	•	•	•	•	•	•	•	•	•	•	•	•	•	•	•	•	•	•	•	•	•
H3...S	•	•	•	•	•	•	•	•	•	•	•	•	•	•	•	•	•	•	•	•	•	•	•	•	•	•	•	•	•	•	•	•	•	•	•	•	•	•

Tipo Type	Angoli d'apertura CPLM40 / Opening angles CPLM40																																					
	2	4	6	8	10	13	16	19	23	27	31	35	39	45	48	53	57	61	66	70	74	79	83	87	91	95	99	103	108									
V1...	•	•	•	•	•	•	•	•	•	•	•	•	•	•	•	•	•	•	•	•	•	•	•	•	•	•	•	•	•	•	•	•	•	•	•	•		
H1...	•	•	•	•	•	•	•	•	•	•	•	•	•	•	•	•	•	•	•	•	•	•	•	•	•	•	•	•	•	•	•	•	•	•	•	•	•	
V1...S	•	•	•	•	•	•	•	•	•	•	•	•	•	•	•	•	•	•	•	•	•	•	•	•	•	•	•	•	•	•	•	•	•	•	•	•	•	•
H1...S	•	•	•	•	•	•	•	•	•	•	•	•	•	•	•	•	•	•	•	•	•	•	•	•	•	•	•	•	•	•	•	•	•	•	•	•	•	•
V2...	•	•	•	•	•	•	•	•	•	•	•	•	•	•	•	•	•	•	•	•	•	•	•	•	•	•	•	•	•	•	•	•	•	•	•	•	•	•
H2...	•	•	•	•	•	•	•	•	•	•	•	•	•	•	•	•	•	•	•	•	•	•	•	•	•	•	•	•	•	•	•	•	•	•	•	•	•	•
V2...S	•	•	•	•	•	•	•	•	•	•	•	•	•	•	•	•	•	•	•	•	•	•	•	•	•	•	•	•	•	•	•	•	•	•	•	•	•	•
H2...S	•	•	•	•	•	•	•	•	•	•	•	•	•	•	•	•	•	•	•	•	•	•	•	•	•	•	•	•	•	•	•	•	•	•	•	•	•	•
V3...	•	•	•	•	•	•	•	•	•	•	•	•	•	•	•	•	•	•	•	•	•	•	•	•	•	•	•	•	•	•	•	•	•	•	•	•	•	•
H3...	•	•	•	•	•	•	•	•	•	•	•	•	•	•	•	•	•	•	•	•	•	•	•	•	•	•	•	•	•	•	•	•	•	•	•	•	•	•
V3...S	•	•	•	•	•	•	•	•	•	•	•	•	•	•	•	•	•	•	•	•	•	•	•	•	•	•	•	•	•	•	•	•	•	•	•	•	•	•
H3...S	•	•	•	•	•	•	•	•	•	•	•	•	•	•	•	•	•	•	•	•	•	•	•	•	•	•	•	•	•	•	•	•	•	•	•	•	•	•