

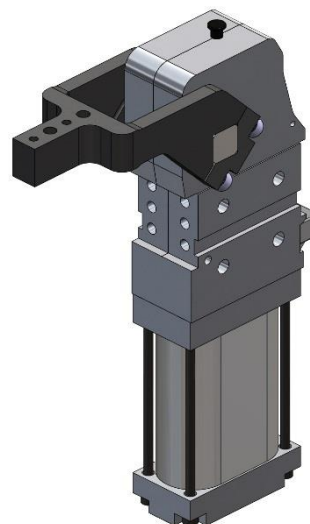


Chiusura pneumatica CPL50/63

Pneumatic clamp CPL50/63

Caratteristiche principali:

- Fianchetti in alluminio
- Dispositivo a ginocchiera
- Angolo di apertura facilmente modificabile
- Perno di controllo della posizione finale
- Leve versatili in ghisa V e H
- 4 possibilità di staffaggio (fronte, retro e sui lati)
- 2 differenti alesaggi del cilindro pneumatico: 50 e 63 mm
- 2 fori di connessione G1/4"
- Finecorsa induttivo (connessione M12x1)
- Comando manuale
- Tassello fermo leva esterno (optional)



Main characteristics:

- Aluminum flanks
- Toggle action mechanism
- Opening angle easily adjustable
- Checking pin for verifying the end position
- Versatile iron steel arms V and H
- 4 mounting areas (front, back, on the sides)
- 2 different pneumatic cylinder bores: 50 and 63 mm
- 2 feeding ports G1/4"
- Inductive proximity switch (connection M12x1)
- Hand lever
- External arm hard stop (optional)


[PDF](#)

[3D Step](#)

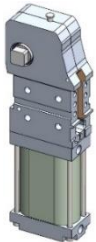
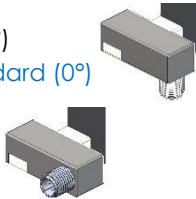



[WEB](#)

Indice. Index.

Pagina Page	Descrizione Description		
1	Caratteristiche principali / Main characteristics		
2	Codice d'ordine / Ordering example		
3 - 4	Pagina dimensionale Dimensional page	CPL50-V1... / CPL50-H1...	
5 - 6		CPL50-V1...S / CPL50-H1...S	
7 - 8		CPL50-V3... / CPL50-H3...	
9 - 10		CPL50-V3...S / CPL50-H3...S	
11 - 12		CPL63-V1... / CPL63-H1...	
13 - 14		CPL63-V1...S / CPL63-H1...S	
15 - 16		CPL63-V3... / CPL63-H3...	
17 - 18		CPL63-V3...S / CPL63-H3...S	
19 - 20		CPLM50/63 V1... / CPLM50/63 H1...	
21 - 22		CPLM50/63 V1...S / CPLM50/63 H1...S	
23 - 24		CPLM50/63 V3... / CPLM50/63 H3...	
25 - 26		CPLM50/63 V3...S / CPLM50/63 H3...S	
27 - 28		Diagrammi / Diagrams	
29		Schemi Diagrams	Finecorsa induttivo M12 M12 Inductive proximity switch
	Schema pneumatico / Pneumatic plan		
30	Istruzioni operative Operating instructions	Modifica cambio angolo d'apertura Opening angle change	
31 - 32	Accessori Accessories	Gruppo aggancio leva AL AL Retaining clip	
		Tassello leva esterno External arm hard stop	
33	Ricambi / Spare parts		
34	Note / Notes		



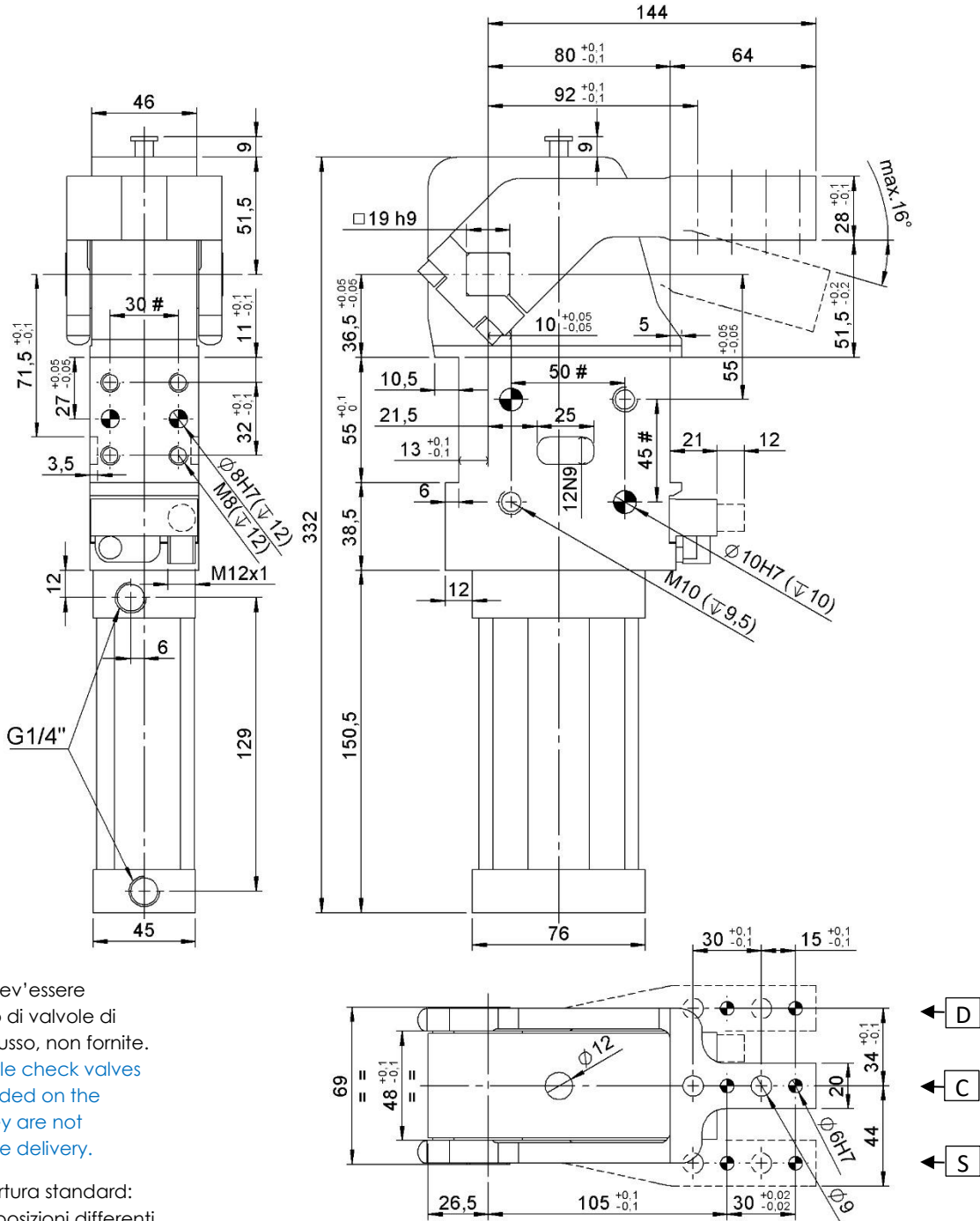
Codice d'ordine. Ordering example.

CPL50	LA	V1C	I1	G	-	107																								
<p>Modello ed alesaggio cilindro: Model and cylinder bore</p> <p>CPL50 chiusura standard CPL alesaggio Ø50mm standard clamp CPL cylinder bore Ø50mm</p> <p>CPLM50 chiusura standard CPL con comando manuale alesaggio Ø50mm standard clamp CPL with hand lever cylinder bore Ø50mm</p> <p>CPL63 chiusura standard CPL alesaggio Ø63mm standard clamp CPL cylinder bore Ø63mm</p> <p>CPLM63 chiusura standard CPL con comando manuale alesaggio Ø63mm standard clamp CPL with hand lever cylinder bore 63mm</p> 			<p>Finecorsa: Proximity switch:</p> <p>X: senza finecorsa without proximity switch</p> <p>I1: finecorsa induttivo VEP standard (0°) inductive proximity switch VEP standard (0°)</p> <p>I2: finecorsa induttivo VEP (90°) inductive proximity switch VEP (90°)</p> 																											
			<p>Tipologia fori d'alimentazione: Feeding ports type:</p> <p>G: fori tipo G 1/4" ports type G 1/4"</p> <p>N: fori tipo 1/4" NPT ports type 1/4" NPT</p> 		<p>Angolo d'apertura regolabile: Adjustable opening angle:</p> <table border="1"> <thead> <tr> <th></th> <th>da</th> <th>a</th> <th>Standard</th> </tr> </thead> <tbody> <tr> <td>V...</td> <td>2,5°</td> <td>135°</td> <td>122°</td> </tr> <tr> <td>H...</td> <td>2,5°</td> <td>107°</td> <td>107°</td> </tr> <tr> <td>V1...S</td> <td>2,5°</td> <td>16°</td> <td>16°</td> </tr> <tr> <td>V3...S</td> <td>2,5°</td> <td>26°</td> <td>26°</td> </tr> <tr> <td>H...S</td> <td>2,5°</td> <td>75°</td> <td>75°</td> </tr> </tbody> </table> <p>Nel caso in cui non indicato, la chiusura verrà fornita con l'angolo d'apertura standard. If not indicated, the clamp will be provided with the standard opening angle.</p>		da	a	Standard	V...	2,5°	135°	122°	H...	2,5°	107°	107°	V1...S	2,5°	16°	16°	V3...S	2,5°	26°	26°	H...S	2,5°	75°	75°	
	da	a	Standard																											
V...	2,5°	135°	122°																											
H...	2,5°	107°	107°																											
V1...S	2,5°	16°	16°																											
V3...S	2,5°	26°	26°																											
H...S	2,5°	75°	75°																											
<p>Posizione comando manuale: (specificare solo per tipologia CPLM...)</p> <p>Hand lever position: (specify only for CPLM... type)</p> <p>LX: predisposizione leva lever arrangement</p> <p>LA: leva sinistra left lever</p> <p>LB: leva destra right lever</p> 			<p>Tipologia leva: Type of arm:</p> <p>XXX: senza leva without arm</p> <p>V1C, V1D e V1S (vedere pag. 3&11) (see page 3&11) H1C, H1D e H1S (vedere pag. 4&12) (see page 4&12) V1CS, V1DS e V1SS (vedere pag. 5&13) (see page 5&13) H1CS, H1DS e H1SS (vedere pag. 6&14) (see page 6&14) V3C, V3D e V3S (vedere pag. 7&15) (see page 7&15) H3C, H3D e H3S (vedere pag. 8&16) (see page 8&16) V3CS, V3DS e V3SS (vedere pag. 9&17) (see page 9&17) H3CS, H3DS e H3SS (vedere pag. 10&18) (see page 10&18)</p> <p><u>N.B.: è possibile trasformare la chiusura tipo V... nel tipo H... semplicemente cambiando la posizione della leva.</u> <u>NOTE: It's possible to transform the clamp type V... into the type H... simply changing the arm position.</u></p> <p><u>Disponibile la versione CPL "T" con tassello fermo leva esterno (vedere pag. 32).</u> <u>Available version CPL "T" with external arm hard stop (see page 32).</u></p> 																											



CPL50 V1...S

Chiusura, D.50, Ang. Vario, Leva verticale simmetrica, Offset 15
Clamp, D.50, Vario Op. Angle, Vertical symmetric arm, Offset 15



Il dispositivo dev'essere equipaggiato di valvole di regolazione flusso, non fornite. External throttle check valves must be provided on the assembly. They are not included in the delivery.

Angoli di apertura standard: settabile in 7 posizioni differenti in un range tra 2,5° e 16°.

Standard opening angles: settable in 7 different positions in a range between 2,5° and 16°.

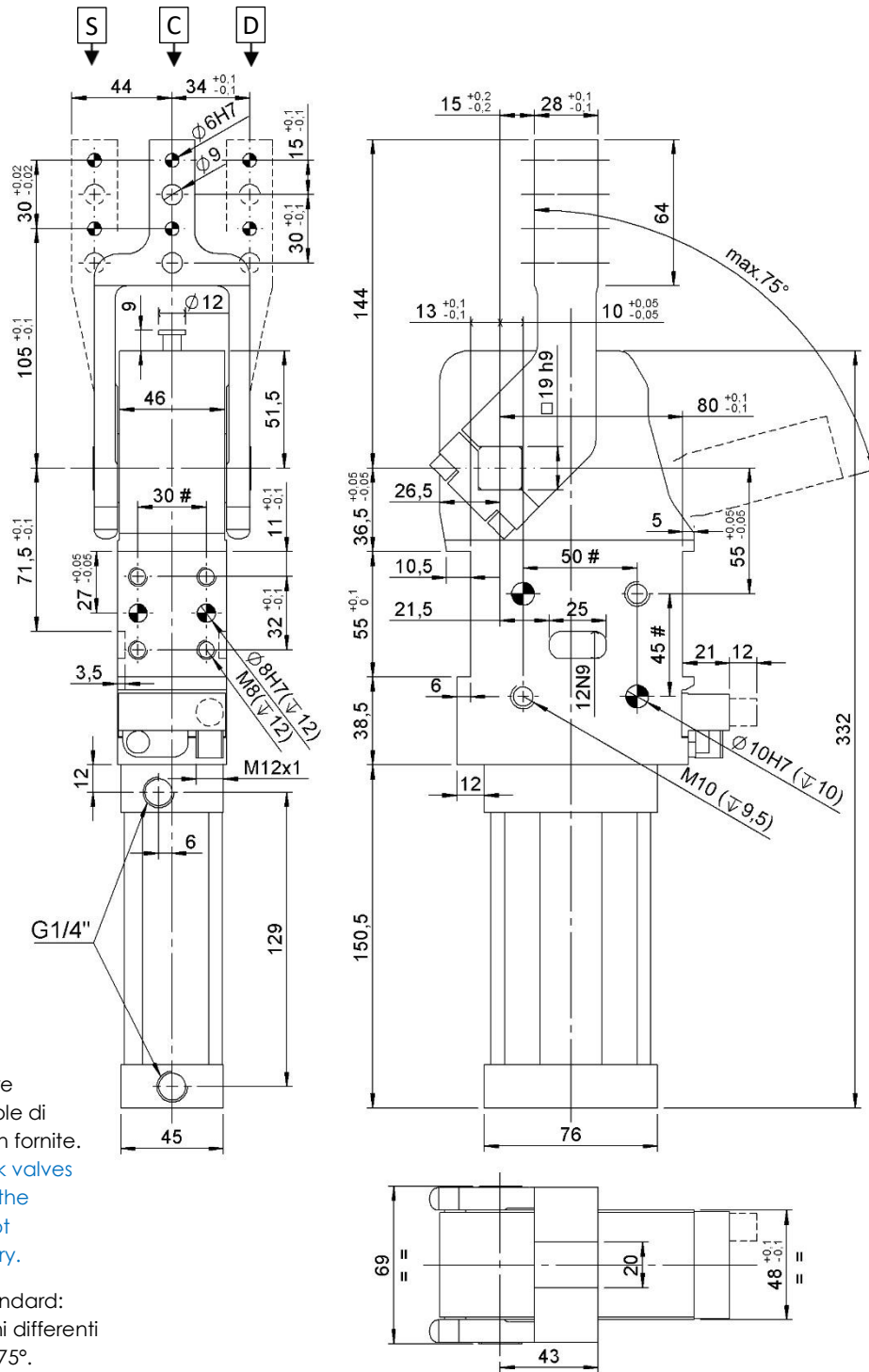
Tolleranze: fori spina: ± 0.02 | fori filettati: ± 0.1
#Tolerances: dowel holes: ± 0.02 | screw holes: ± 0.1

Modello Type	Alesaggio cilindro Cylinder bore	Momento di ritegno Holding moment	Peso Weight	Pressione d'esercizio Working pressure	Coppia max. di bloccaggio Clamping max. torque (5 bar)	Consumo d'aria Air consumption (5 bar)
	[mm]	[Nm]	[Kg]	[bar]	[Nm]	[l]
CPL50 V1...S	50	1300	~ 4	4 – 8	250	0,9



CPL50 H1...S

Chiusura, D.50, Ang. Vario, Leva orizzontale simmetrica, Offset 15
Clamp, D.50, Vario Op. Angle, Horizontal symmetric arm, Offset 15



Il dispositivo dev'essere equipaggiato di valvole di regolazione flusso, non fornite.

External throttle check valves must be provided on the assembly. They are not included in the delivery.

Angoli di apertura standard: settabile in 22 posizioni differenti in un range tra 2,5° e 75°.

Standard opening angles: settabile in 22 different positions in a range between 2,5° and 75°.

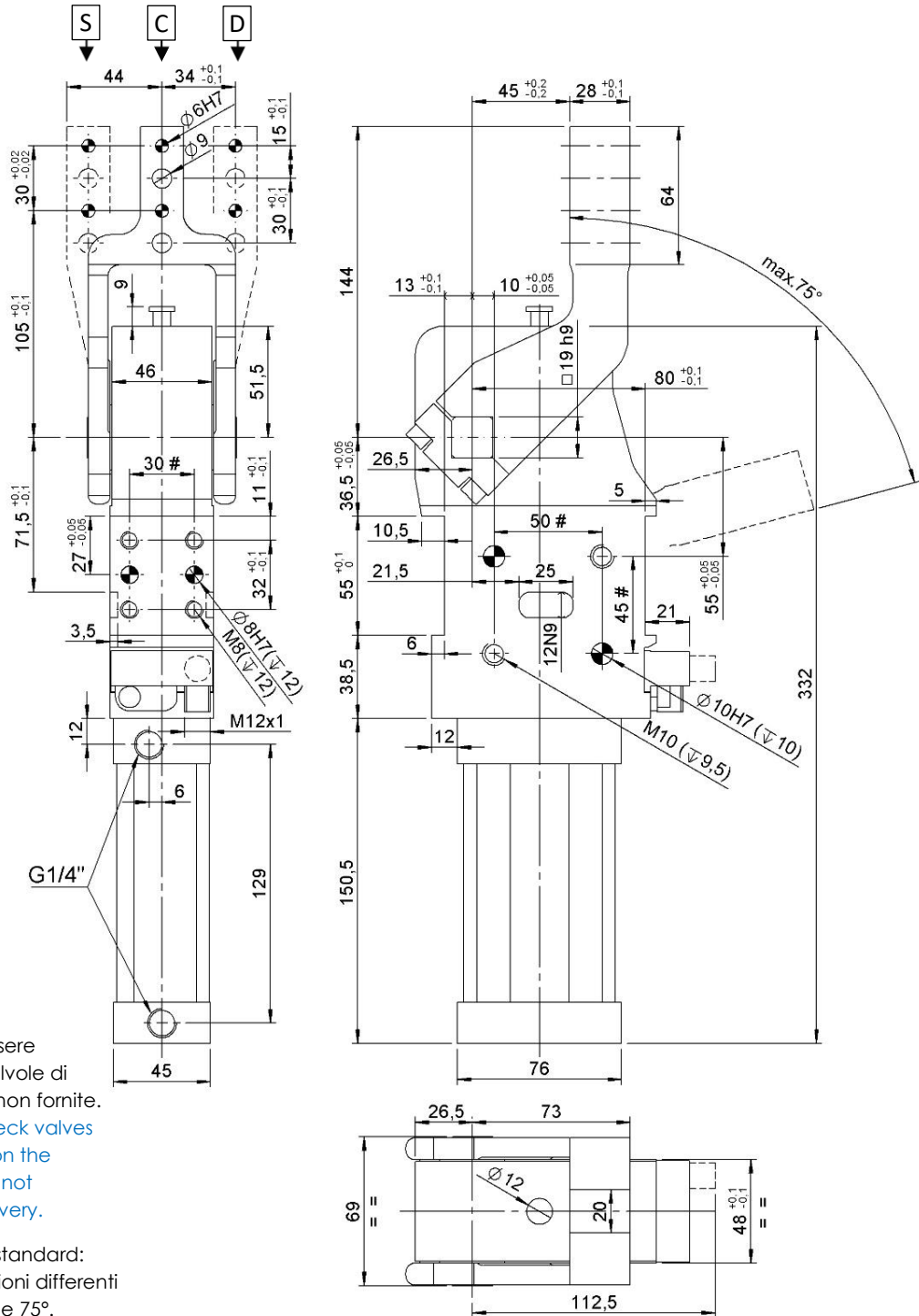
#Tolleranze: fori spina ±0.02, fori filettati ±0.1
#Tolerances: dowel holes ±0.02, screw holes ±0.1

Modello Type	Alesaggio cilindro Cylinder bore	Momento di ritegno Holding moment	Peso Weight	Pressione d'esercizio Working pressure	Coppia max. di bloccaggio Clamping max. torque (5 bar)	Consumo d'aria Air consumption (5 bar)
	[mm]	[Nm]	[Kg]	[bar]	[Nm]	[l]
CPL50 H1...S	50	1300	~ 4	4 – 8	250	2,0



CPL50 H3...S

Chiusura, D.50, Ang. Vario, Leva orizzontale simmetrica, Offset 45
Clamp, D.50, Vario Op. Angle, Horizontal symmetric arm, Offset 45



Il dispositivo dev'essere equipaggiato di valvole di regolazione flusso, non fornite.
External throttle check valves must be provided on the assembly. They are not included in the delivery.

Angoli di apertura standard: settabile in 22 posizioni differenti in un range tra 2,5° e 75°.
Standard opening angles: settabile in 22 different positions in a range between 2,5° and 75°.

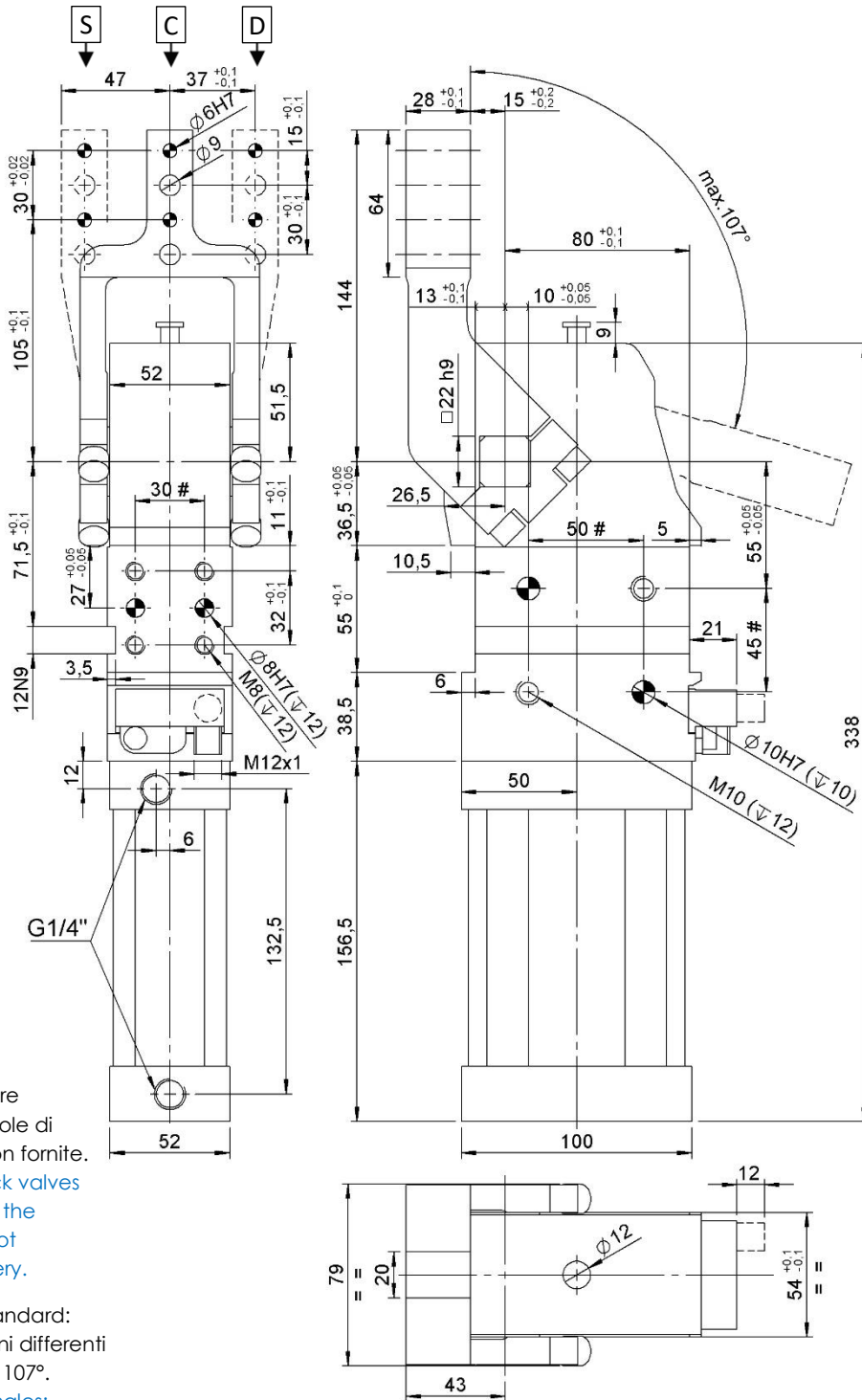
#Tolleranze: fori spina ±0.02, fori filettati ±0.1
#Tolerances: dowel holes ±0.02, screw holes ±0.1

Modello Type	Alesaggio cilindro Cylinder bore	Momento di ritegno Holding moment	Peso Weight	Pressione d'esercizio Working pressure	Coppia max. di bloccaggio Clamping max. torque (5 bar)	Consumo d'aria Air consumption (5 bar)
	[mm]	[Nm]	[Kg]	[bar]	[Nm]	[l]
CPL50 H3...S	50	1300	~ 4	4 – 8	250	2,0



CPL63 H1...

Chiusura, D.63, Ang. Vario, Leva orizzontale, Offset 15
Clamp, D.63, Vario Op. Angle, Horizontal arm, Offset 15



Il dispositivo dev'essere equipaggiato di valvole di regolazione flusso, non fornite.
External throttle check valves must be provided on the assembly. They are not included in the delivery.

Angoli di apertura standard: settabile in 30 posizioni differenti in un range tra 2,5° e 107°.
Standard opening angles: settable in 30 different positions in a range between 2,5° and 107°.

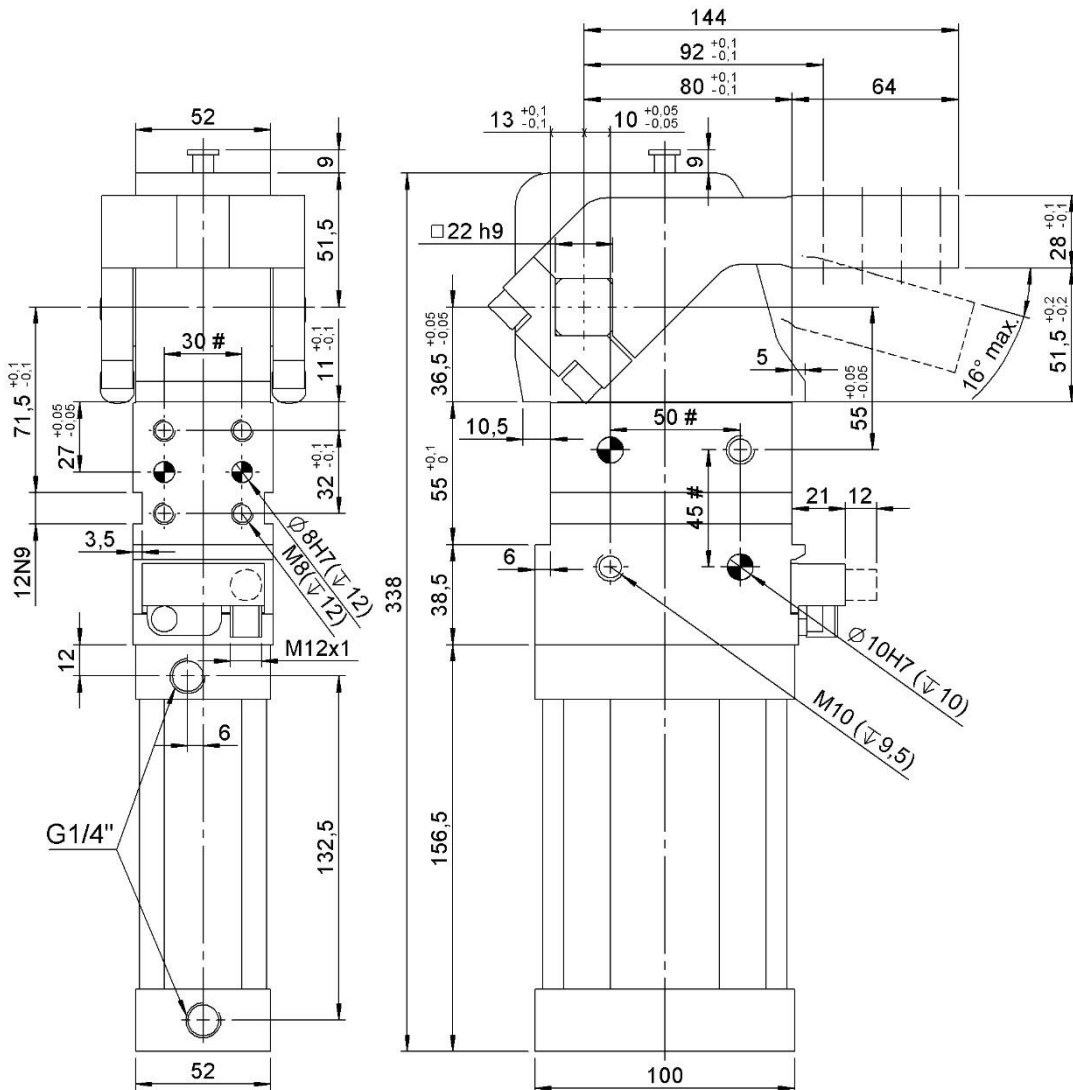
#Tolleranze: fori spina ± 0.02 , fori filettati ± 0.1
#Tolerances: dowel holes ± 0.02 , screw holes ± 0.1

Modello Type	Alesaggio cilindro Cylinder bore	Momento di ritegno Holding moment	Peso Weight	Pressione d'esercizio Working pressure	Coppia max. di bloccaggio Clamping max. torque (5 bar)	Consumo d'aria Air consumption (5 bar)
	[mm]	[Nm]	[Kg]	[bar]	[Nm]	[l]
CPL63 H1...	63	1700	~ 5	4 – 8	420	3,2



CPL63 V1...S

Chiusura, D.63, Ang. Vario, Leva verticale simmetrica, Offset 15
 Clamp, D.63, Vario Op. Angle, Vertical symmetric arm, Offset 15



Il dispositivo dev'essere equipaggiato di valvole di regolazione flusso, non fornite. External throttle check valves must be provided on the assembly. They are not included in the delivery.

Angoli di apertura standard: settabile in 7 posizioni differenti in un range tra 2,5° e 16°.

Standard opening angles: settabile in 7 different positions in a range between 2,5° and 16°.

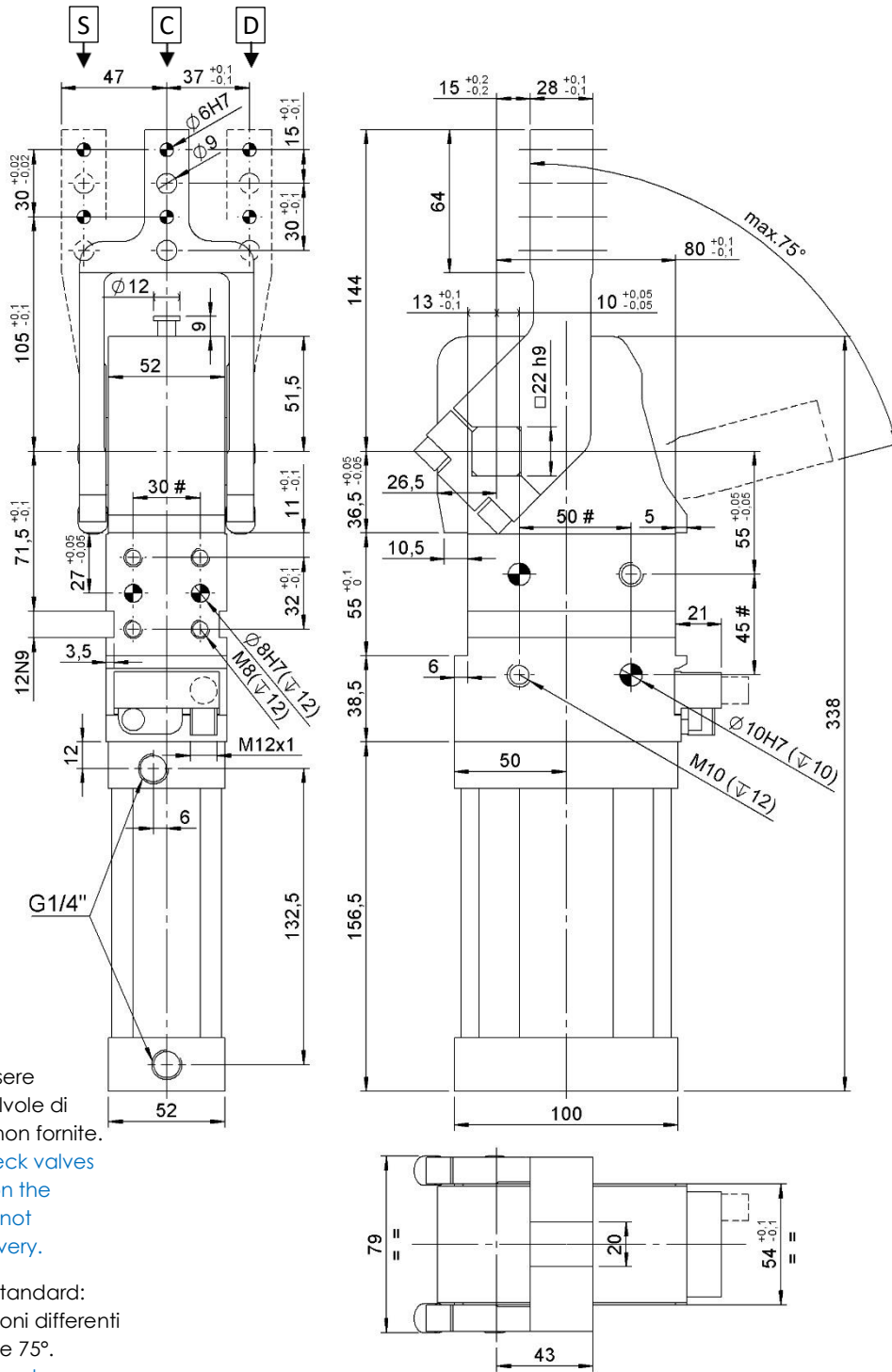
#Tolleranze: fori spina ±0.02, fori filettati ±0.1
 #Tolerances: dowel holes ±0.02, screw holes ±0.1

Modello Type	Alesaggio cilindro Cylinder bore	Momento di ritegno Holding moment	Peso Weight	Pressione d'esercizio Working pressure	Coppia max. di bloccaggio Clamping max. torque (5 bar)	Consumo d'aria Air consumption (5 bar)
	[mm]	[Nm]	[Kg]	[bar]	[Nm]	[l]
CPL63 V1...S	63	1700	~ 5	4 – 8	420	1,1



CPL63 H1...S

Chiusura, D.63, Ang. Vario, Leva orizzontale simmetrica, Offset 15
Clamp, D.63, Vario Op. Angle, Horizontal symmetric arm, Offset 15



Il dispositivo dev'essere equipaggiato di valvole di regolazione flusso, non fornite.

External throttle check valves must be provided on the assembly. They are not included in the delivery.

Angoli di apertura standard: settabile in 22 posizioni differenti in un range tra 2,5° e 75°.

Standard opening angles: settabile in 22 different positions in a range between 2,5° and 75°.

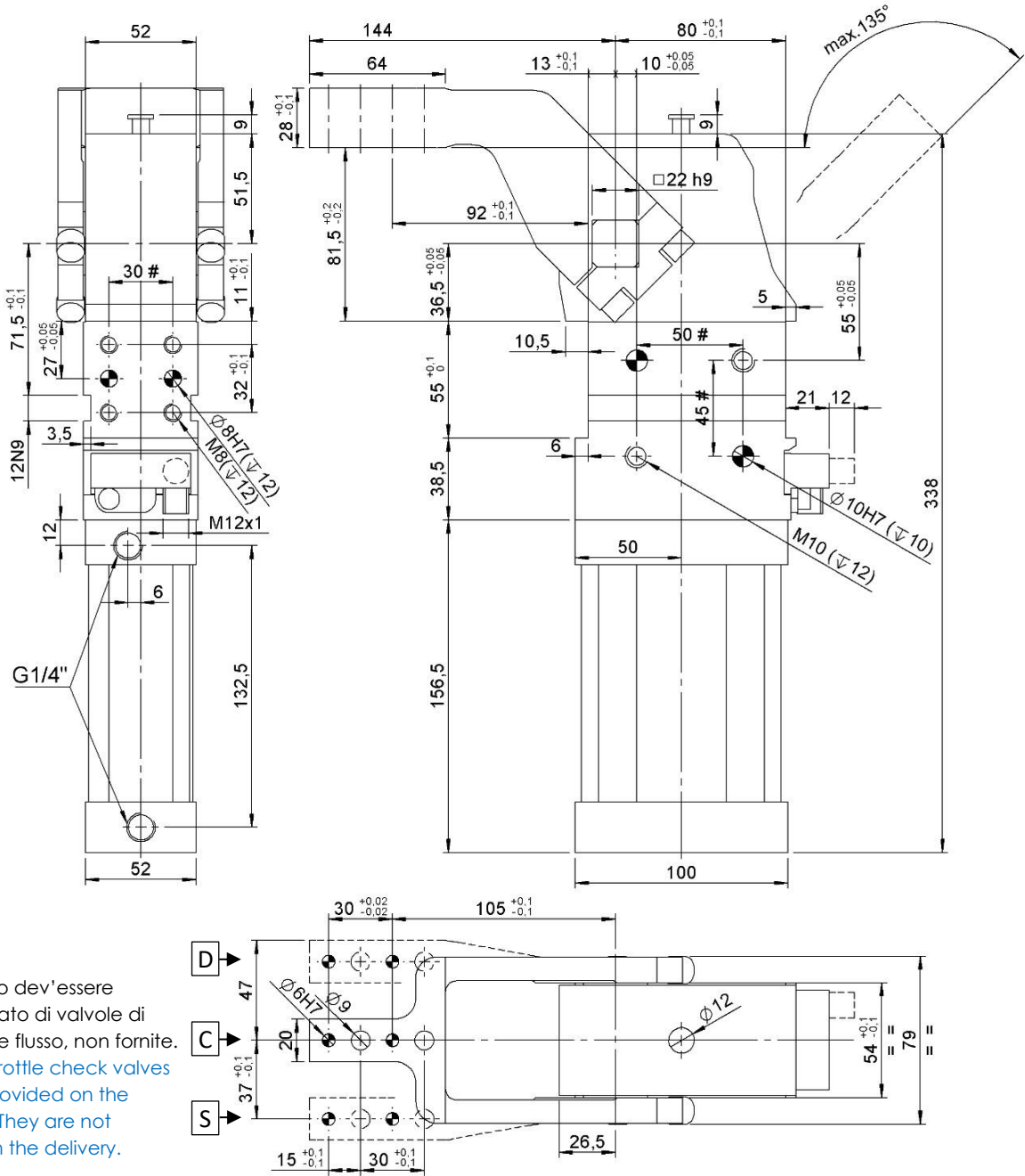
#Tolleranze: fori spina ± 0.02 , fori filettati ± 0.1
#Tolerances: dowel holes ± 0.02 , screw holes ± 0.1

Modello Type	Alesaggio cilindro Cylinder bore	Momento di ritegno Holding moment	Peso Weight	Pressione d'esercizio Working pressure	Coppia max. di bloccaggio Clamping max. torque (5 bar)	Consumo d'aria Air consumption (5 bar)
	[mm]	[Nm]	[Kg]	[bar]	[Nm]	[l]
CPL63-H1...S	63	1700	~ 5	4 – 8	420	2,5



CPL63 V3...

Chiusura, D.63, Ang. Vario, Leva verticale, Offset 45
Clamp, D.63, Vario Op. Angle, Vertical arm, Offset 45



Il dispositivo dev'essere equipaggiato di valvole di regolazione flusso, non fornite. External throttle check valves must be provided on the assembly. They are not included in the delivery.

Angoli di apertura standard: settabile in 35 posizioni differenti in un range tra 2,5° e 135°. Standard opening angles: settable in 35 different positions in a range between 2,5° and 135°.

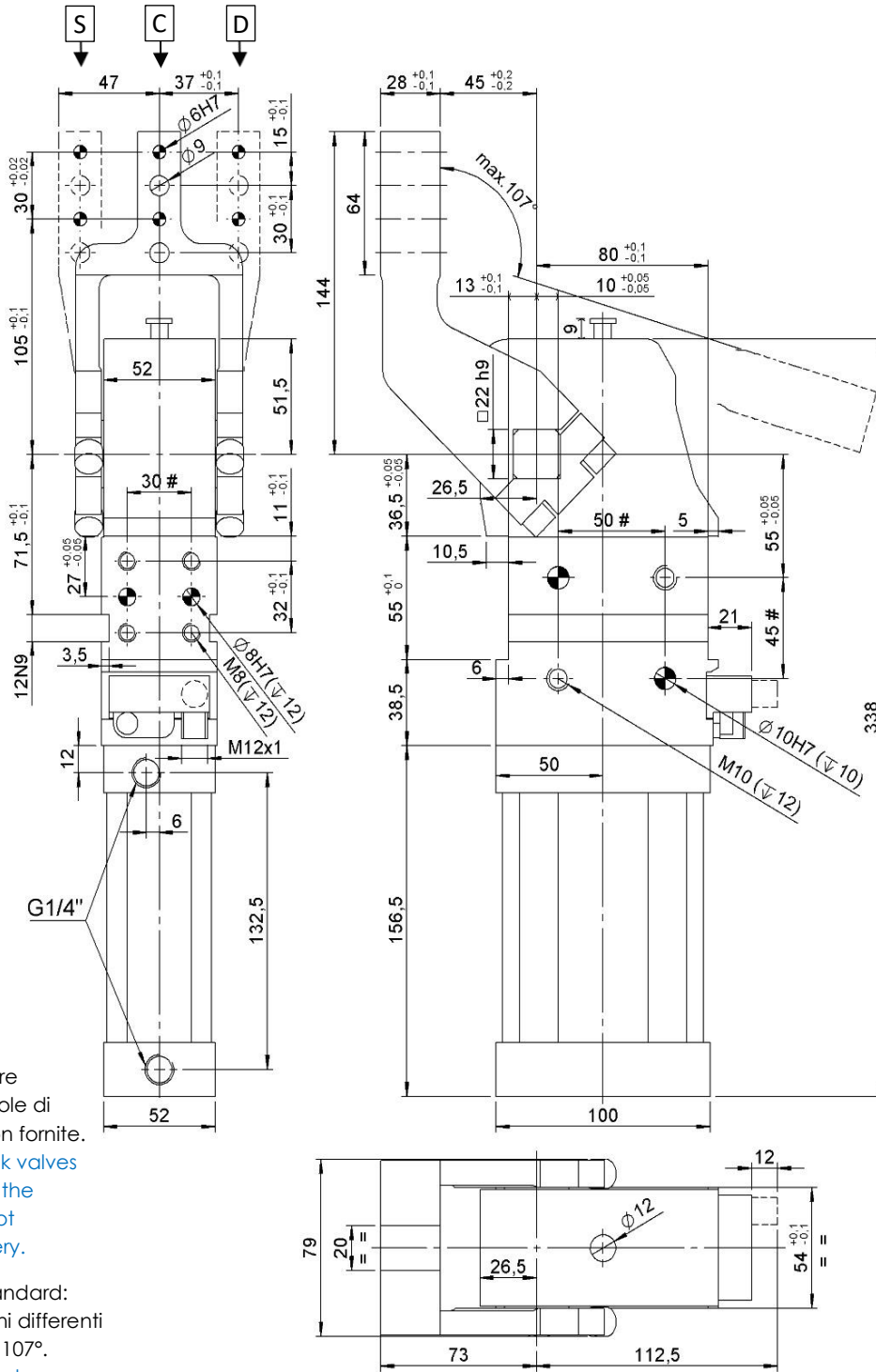
#Tolleranze: fori spina ±0.02, fori filettati ±0.1
#Tolerances: dowel holes ±0.02, screw holes ±0.1

Modello Type	Alesaggio cilindro Cylinder bore	Momento di ritegno Holding moment	Peso Weight	Pressione d'esercizio Working pressure	Coppia max. di bloccaggio Clamping max. torque (5 bar)	Consumo d'aria Air consumption (5 bar)
	[mm]	[Nm]	[Kg]	[bar]	[Nm]	[l]
CPL63 V3...	63	1700	~ 5	4 – 8	420	3,8



CPL63 H3...

Chiusura, D.63, Ang. Vario, Leva orizzontale, Offset 45
Clamp, D.63, Vario Op. Angle, Horizontal arm, Offset 45



Il dispositivo dev'essere equipaggiato di valvole di regolazione flusso, non fornite.
External throttle check valves must be provided on the assembly. They are not included in the delivery.

Angoli di apertura standard: settabile in 30 posizioni differenti in un range tra 2,5° e 107°.
Standard opening angles: settabile in 30 different positions in a range between 2,5° and 107°.

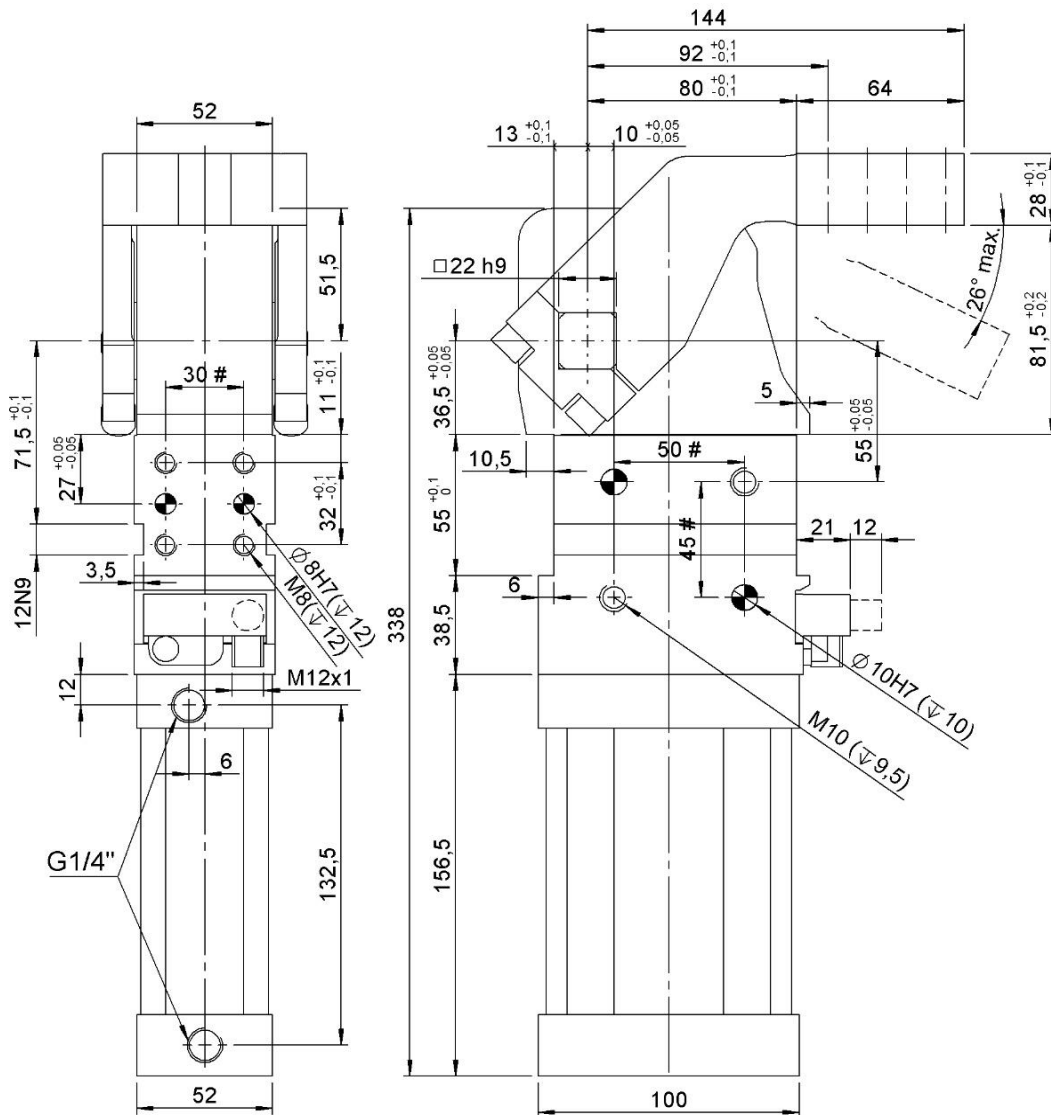
#Tolleranze: fori spina ±0.02, fori filettati ±0.1
#Tolerances: dowel holes ±0.02, screw holes ±0.1

Modello Type	Alesaggio cilindro Cylinder bore	Momento di ritegno Holding moment	Peso Weight	Pressione d'esercizio Working pressure	Coppia max. di bloccaggio Clamping max. torque (5 bar)	Consumo d'aria Air consumption (5 bar)
	[mm]	[Nm]	[Kg]	[bar]	[Nm]	[l]
CPL63 H3...	63	1700	~ 5	4 – 8	420	3,2



CPL63 V3...S

Chiusura, D.63, Ang. Vario, Leva verticale simmetrica, Offset 45
 Clamp, D.63, Vario Op. Angle, Vertical symmetric arm, Offset 45



Il dispositivo dev'essere equipaggiato di valvole di regolazione flusso, non fornite. External throttle check valves must be provided on the assembly. They are not included in the delivery.

Angoli di apertura standard: settabile in 7 posizioni differenti in un range tra 2,5° e 26°.

Standard opening angles: settabile in 7 different positions in a range between 2,5° and 26°.

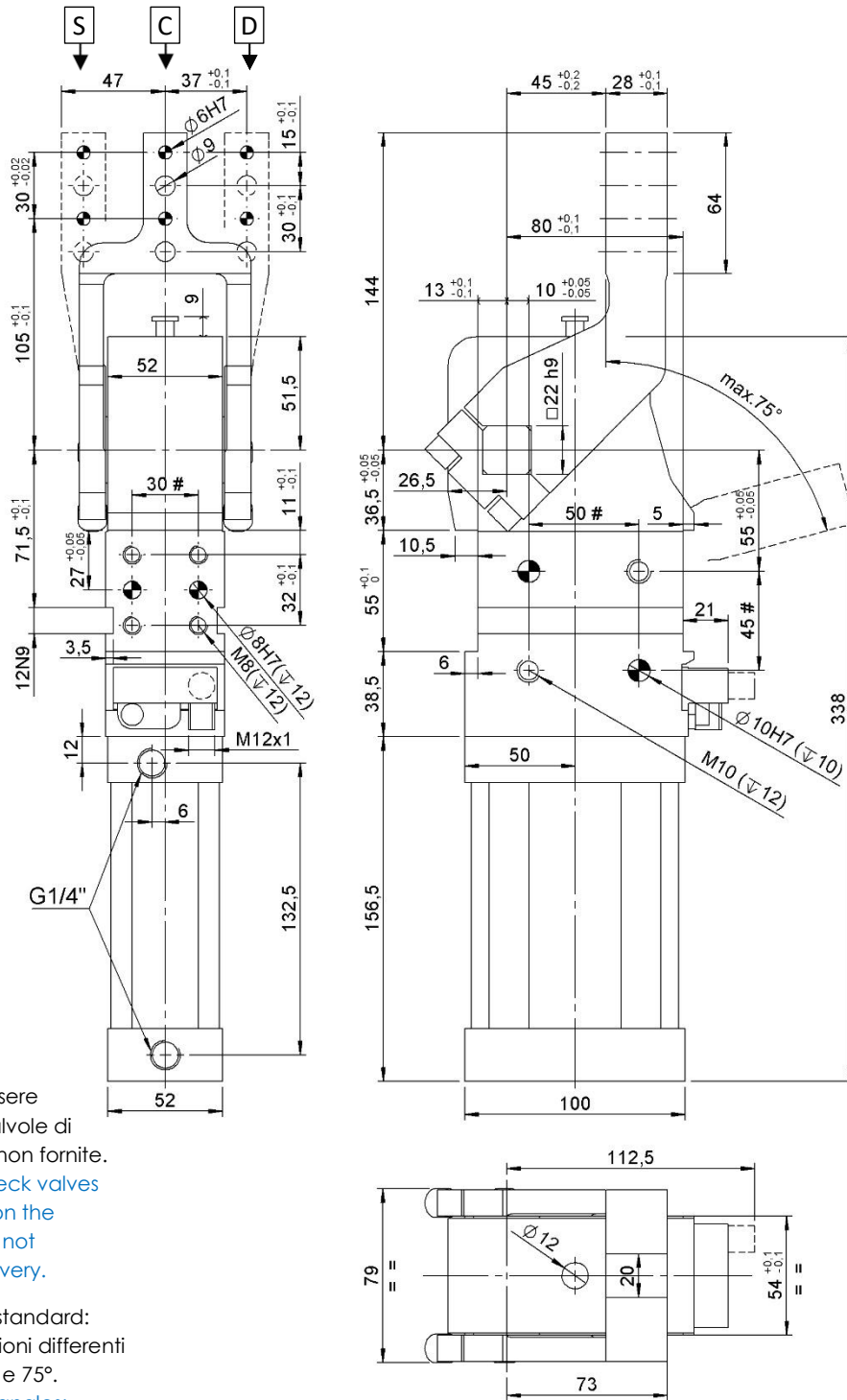
#Tolleranze: fori spina ±0.02, fori filettati ±0.1
 #Tolerances: dowel holes ±0.02, screw holes ±0.1

Modello Type	Alesaggio cilindro Cylinder bore	Momento di ritegno Holding moment	Peso Weight	Pressione d'esercizio Working pressure	Coppia max. di bloccaggio Clamping max. torque (5 bar)	Consumo d'aria Air consumption (5 bar)
	[mm]	[Nm]	[Kg]	[bar]	[Nm]	[l]
CPL63 V3...S	63	1700	~ 5	4 – 8	420	1,3



CPL63 H3...S

Chiusura, D.63, Ang. Vario, Leva orizzontale simmetrica, Offset 45
Clamp, D.63, Vario Op. Angle, Horizontal symmetric arm, Offset 45



Il dispositivo dev'essere equipaggiato di valvole di regolazione flusso, non fornite.
External throttle check valves must be provided on the assembly. They are not included in the delivery.

Angoli di apertura standard: settabile in 22 posizioni differenti in un range tra 2,5° e 75°.
Standard opening angles: settabile in 22 different positions in a range between 2,5° and 75°.

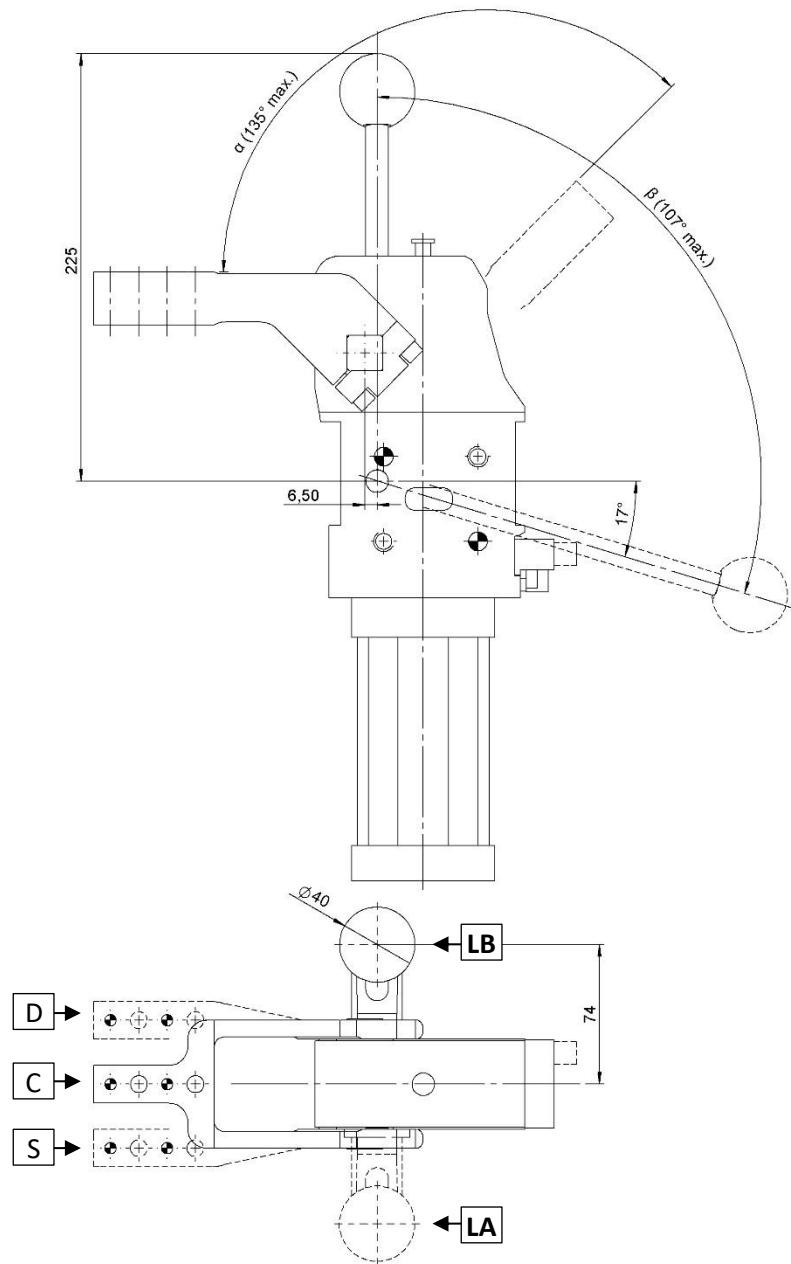
#Tolleranze: fori spina ±0.02, fori filettati ±0.1
#Tolerances: dowel holes ±0.02, screw holes ±0.1

Modello Type	Alesaggio cilindro Cylinder bore	Momento di ritegno Holding moment	Peso Weight	Pressione d'esercizio Working pressure	Coppia max. di bloccaggio Clamping max. torque (5 bar)	Consumo d'aria Air consumption (5 bar)
	[mm]	[Nm]	[Kg]	[bar]	[Nm]	[l]
CPL63-H3...S	63	1700	~ 5	4 – 8	420	2,5



CPLM50L...V1... / CPLM63L...V1...

Chiusura, D.50/63, Ang. Vario, Cmd. Manuale, Leva Vert, Offset 15
 Clamp, D.50/63, Vario Op. Angle, Hand Lever, Vert. arm, Offset 15



α	16°	30°	46°	58°	75°	91°	107°	122°	135°
β	37°	47°	57°	63°	73°	82°	92°	101°	107°

Leva comando manuale orientabile ad intervalli di 20°
 Manual control adjustable in steps of 20°

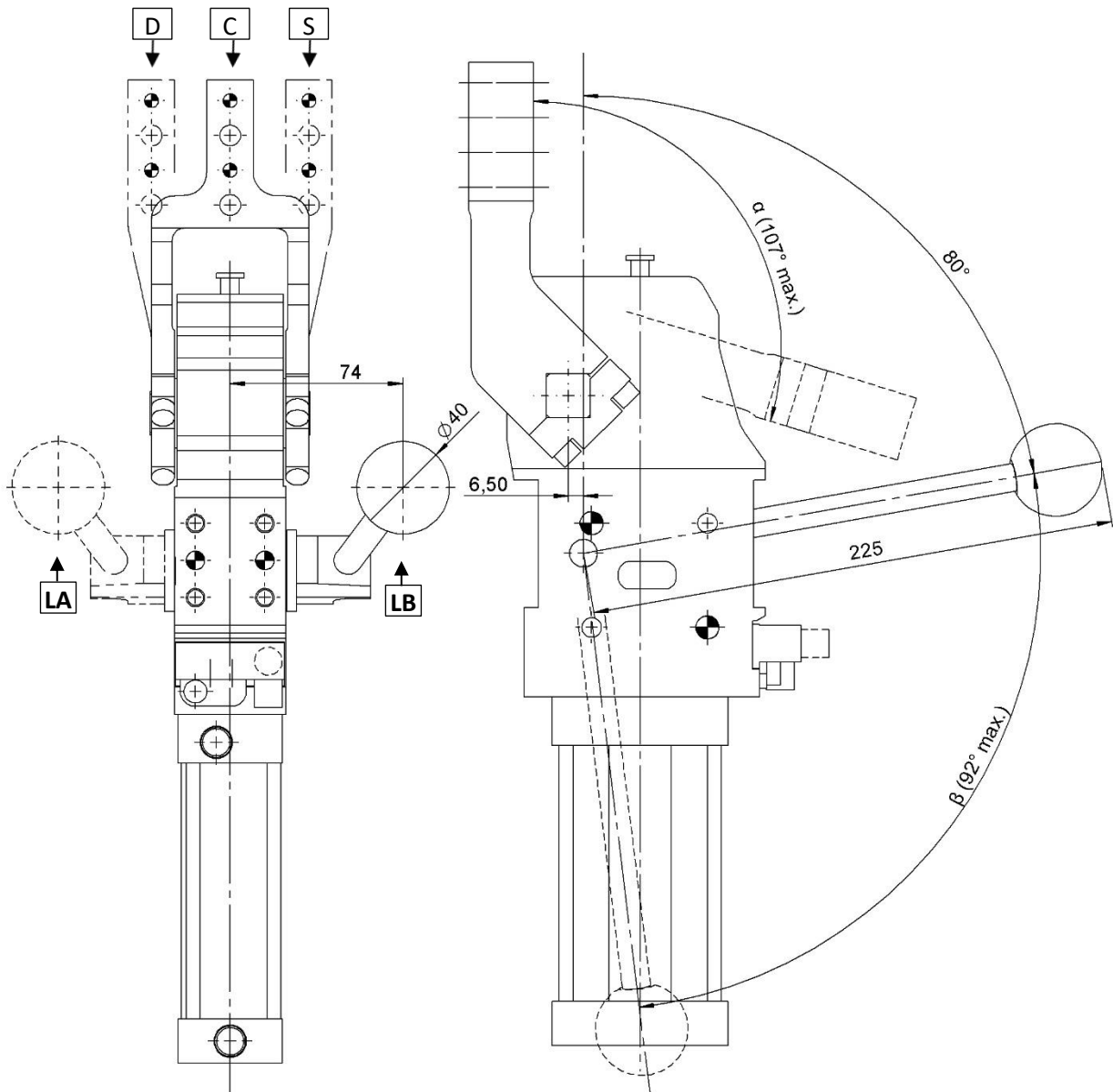
#Tolleranze: fori spina ±0.02, fori filettati ±0.1
 #Tolerances: dowel holes ±0.02, screw holes ±0.1

Modello Type	Alesaggio cilindro Cylinder bore	Momento di ritegno Holding moment	Peso Weight	Pressione d'esercizio Working pressure	Max. forza manuale applicabile Max. manual force
	[mm]	[Nm]	[Kg]	[bar]	[N]
CPLM50L...V1...	50	1300	~ 4,5	4 – 8	200
CPLM63L...V1...	63	1700	~ 5,5		



CPLM50L...H1... / CPLM63L...H1...

Chiusura, D.50/63, Ang. Vario, Cmd. Manuale, Leva Orizz., Offset 15
 Clamp, D.50/63, Vario Op. Angle, Hand Lever, Horiz. Arm, Offset 15



α	16°	30°	46°	58°	75°	91°	107°
β	37°	47°	57°	63°	73°	82°	92°

Leva comando manuale orientabile ad intervalli di 20°
 Manual control adjustable in steps of 20°

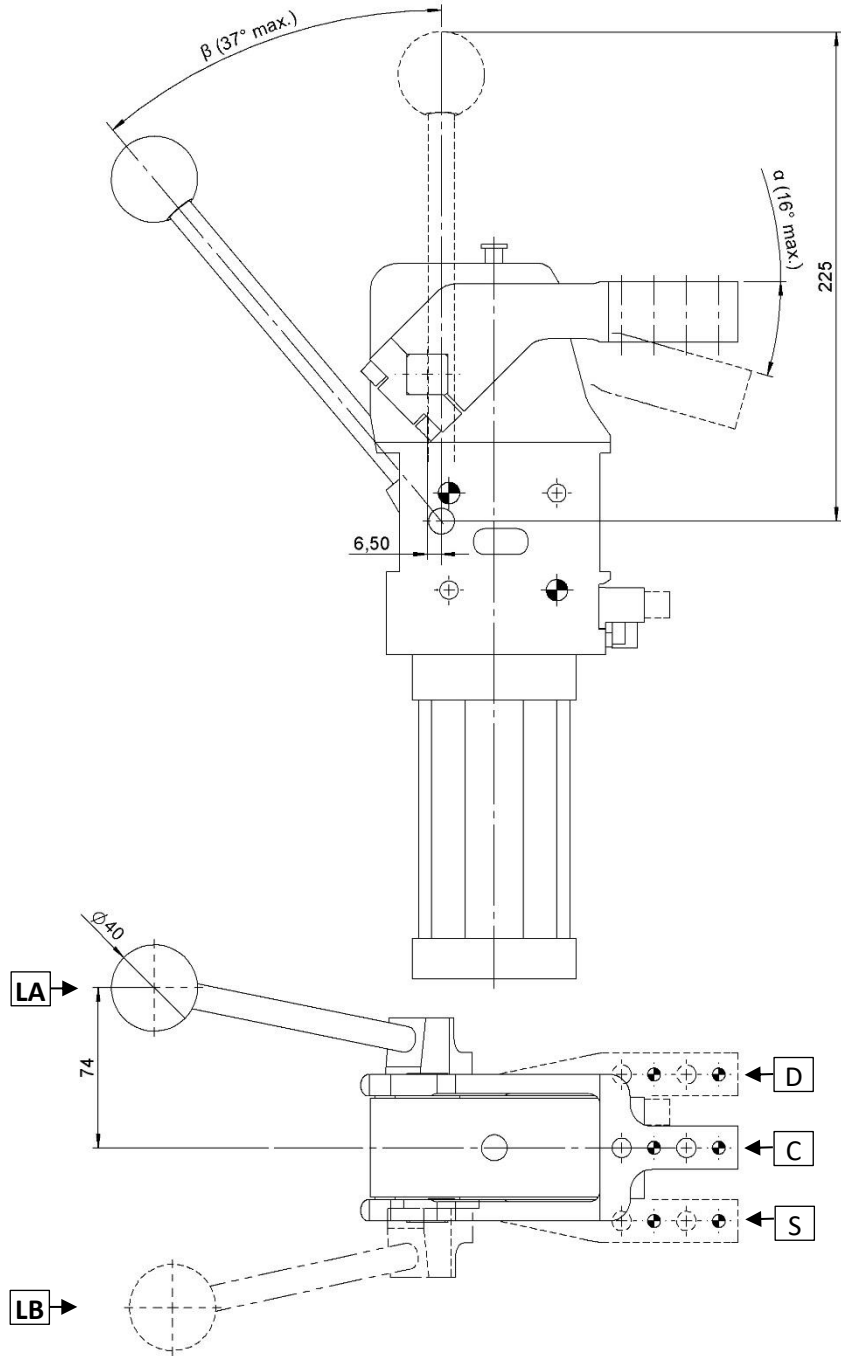
#Tolleranze: fori spina ±0.02, fori filettati ±0.1
 #Tolerances: dowel holes ±0.02, screw holes ±0.1

Modello Type	Alesaggio cilindro Cylinder bore	Momento di ritegno Holding moment	Peso Weight	Pressione d'esercizio Working pressure	Max. forza manuale applicabile Max. manual force
	[mm]	[Nm]	[Kg]	[bar]	[N]
CPLM50L...H1...	50	1300	~ 4,5	4 – 8	200
CPLM63L...H1...	63	1700	~ 5,5		



CPLM50L...V1...S / CPLN63L...V1...S

Chiusura, D.50/63, Ang. Vario, Cmd. Manuale, Vert. Sim., Offset 15
 Clamp, D.50/63, Vario Op. Angle, Hand Lever, Vert. Sym., Offset 15



α	16°
β	37°

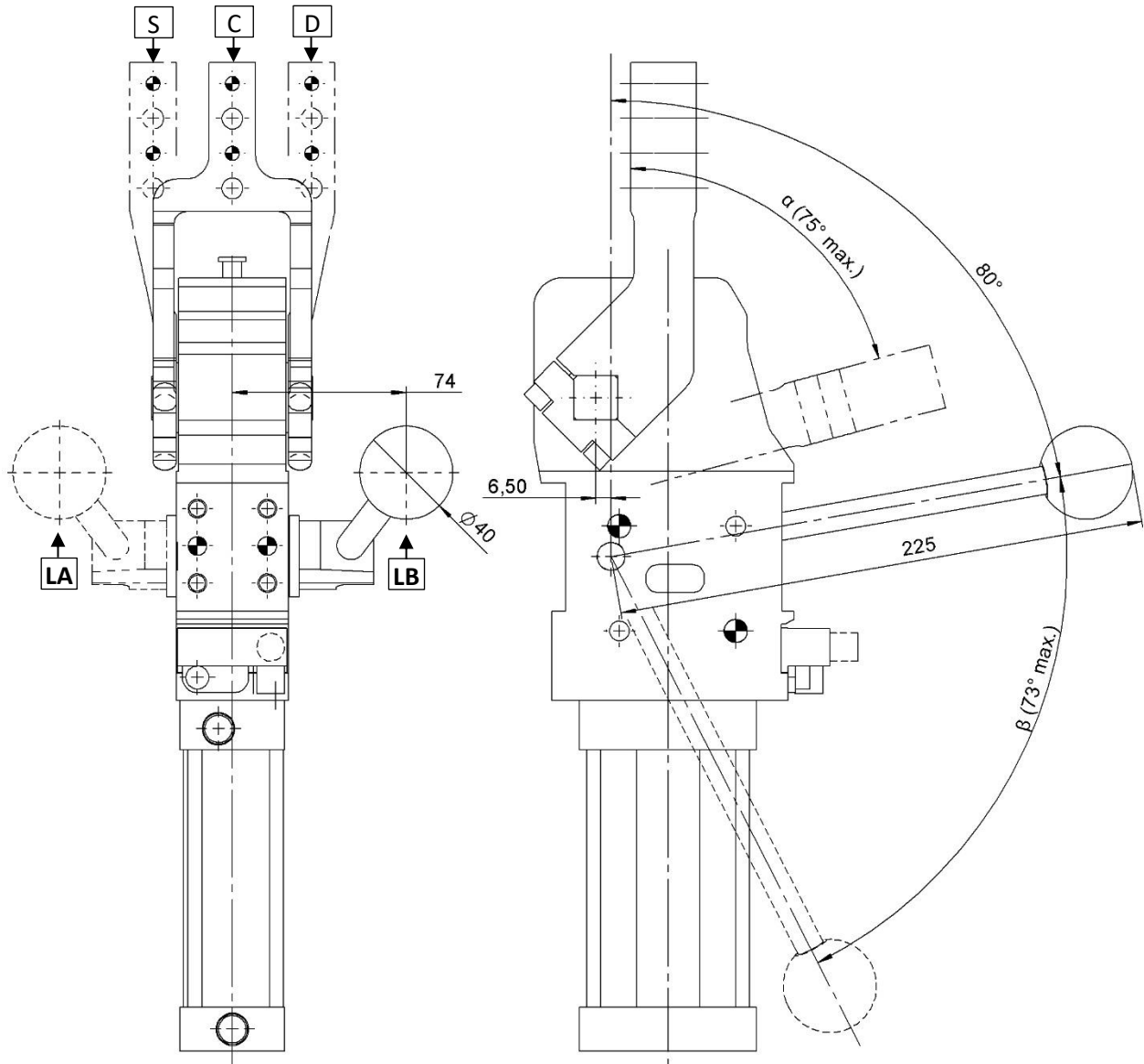
#Tolleranze: fori spina ± 0.02 , fori filettati ± 0.1
 #Tolerances: dowel holes ± 0.02 , screw holes ± 0.1

Modello Type	Alesaggio cilindro Cylinder bore	Momento di ritengo Holding moment	Peso Weight	Pressione d'esercizio Working pressure	Max. forza manuale applicabile Max. manual force
	[mm]	[Nm]	[Kg]	[bar]	[N]
CPLM50L...V1...S	50	1300	~ 4,5	4 – 8	200
CPLM63L...V1...S	63	1700	~ 5,5		



CPLM50L...H1...S / CPLM63L...H1...S

Chiusura, D.50/63, Ang. Vario, Cmd. Manuale, Orizz. Sim., Offset 15
Clamp, D.50/63, Vario Op. Angle, Hand Lever, Horiz. Sym., Offset 15



α	16°	30°	46°	58°	75°
β	37°	47°	57°	63°	73°

Leva comando manuale orientabile ad intervalli di 20°
Manual control adjustable in steps of 20°

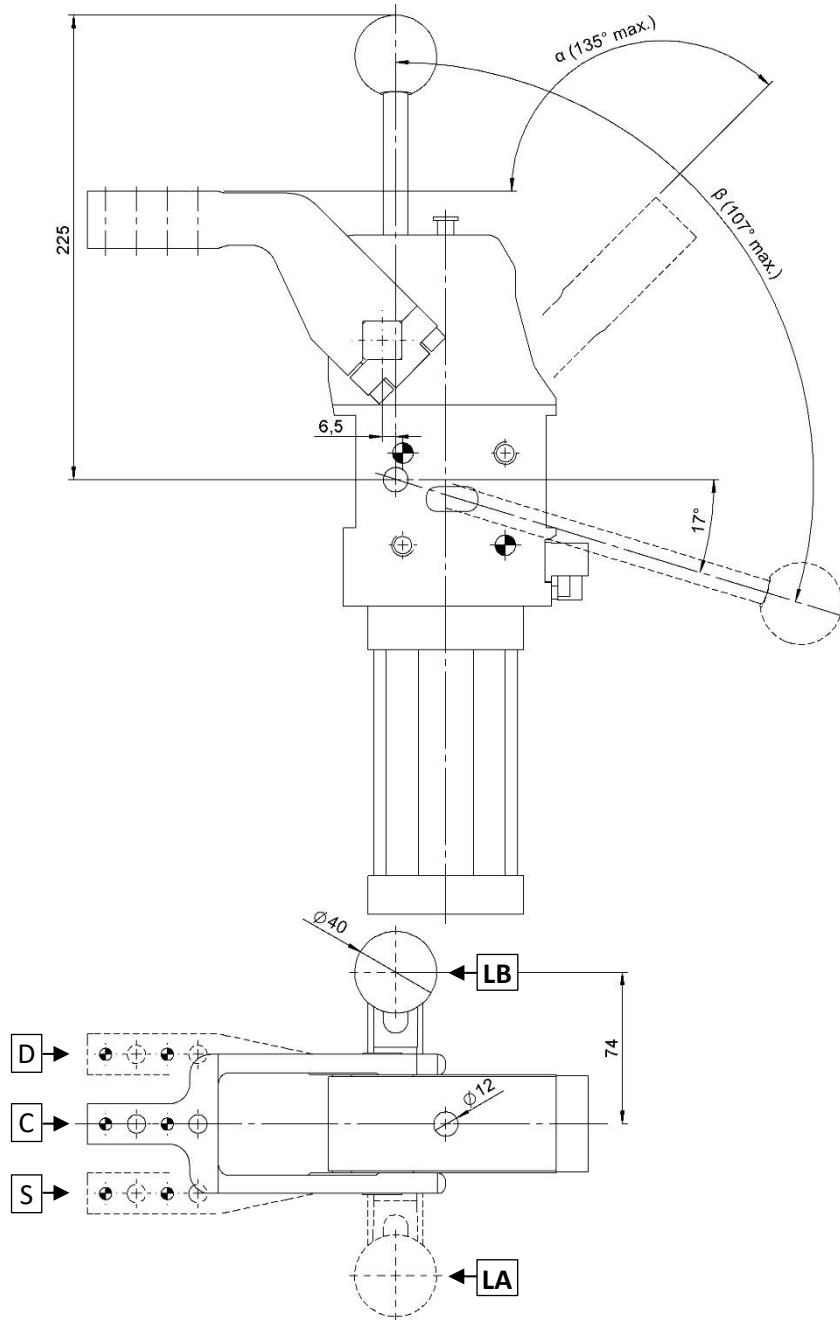
#Tolleranze: fori spina ±0.02, fori filettati ±0.1
#Tolerances: dowel holes ±0.02, screw holes ±0.1

Modello Type	Alesaggio cilindro Cylinder bore	Momento di ritengo Holding moment	Peso Weight	Pressione d'esercizio Working pressure	Max. forza manuale applicabile Max. manual force
	[mm]	[Nm]	[Kg]	[bar]	[N]
CPLM50L...H1...S	50	1300	~ 4,5	4 – 8	200
CPLM63L...H1...S	63	1700	~ 5,5		



CPLM50L...V3... / CPLM63L...V3...

Chiusura, D.50/63, Ang. Vario, Cmd. Manuale, Leva Vert, Offset 45
Clamp, D.50/63, Vario Op. Angle, Hand Lever, Vert. arm, Offset 45



α	16°	30°	46°	58°	75°	91°	107°	122°	135°
β	37°	47°	57°	63°	73°	82°	92°	101°	107°

Leva comando manuale orientabile ad intervalli di 20°
Manual control adjustable in steps of 20°

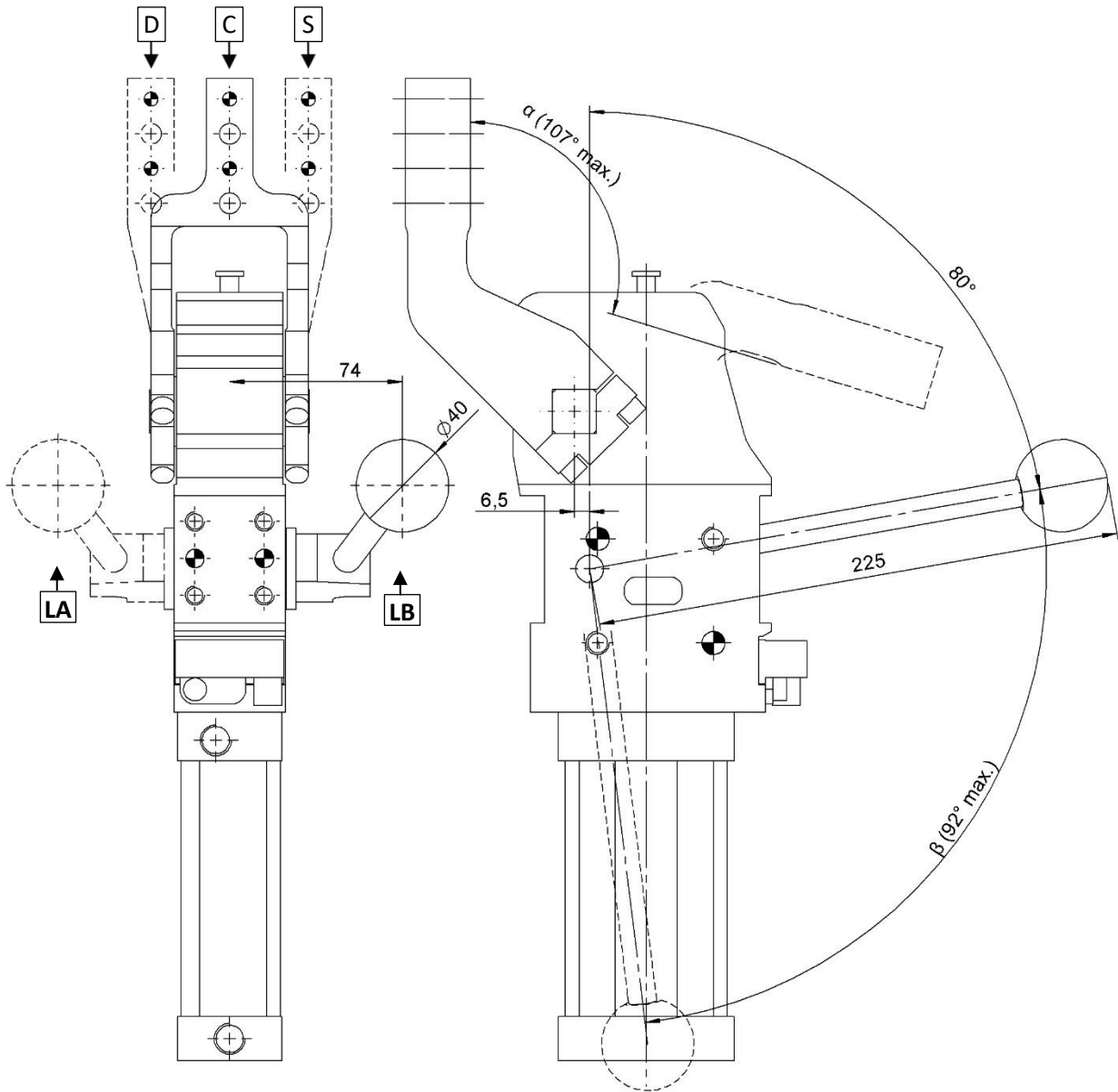
#Tolleranze: fori spina ±0.02, fori filettati ±0.1
#Tolerances: dowel holes ±0.02, screw holes ±0.1

Modello Type	Alesaggio cilindro Cylinder bore	Momento di ritegno Holding moment	Peso Weight	Pressione d'esercizio Working pressure	Max. forza manuale applicabile Max. manual force
	[mm]	[Nm]	[Kg]	[bar]	[N]
CPLM50L...V3...	50	1300	~ 4,5	4 – 8	200
CPLM63L...V3...	63	1700	~ 5,5		



CPLM50L...H3... / CPLM63L...H3...

Chiusura, D.50/63, Ang. Vario, Cmd. Manuale, Leva Orizz., Offset 45
 Clamp, D.50/63, Vario Op. Angle, Hand Lever, Horiz. Arm, Offset 45



α	16°	30°	46°	58°	75°	91°	107°
β	37°	47°	57°	63°	73°	82°	92°

Leva comando manuale orientabile ad intervalli di 20°
 Manual control adjustable in steps of 20°

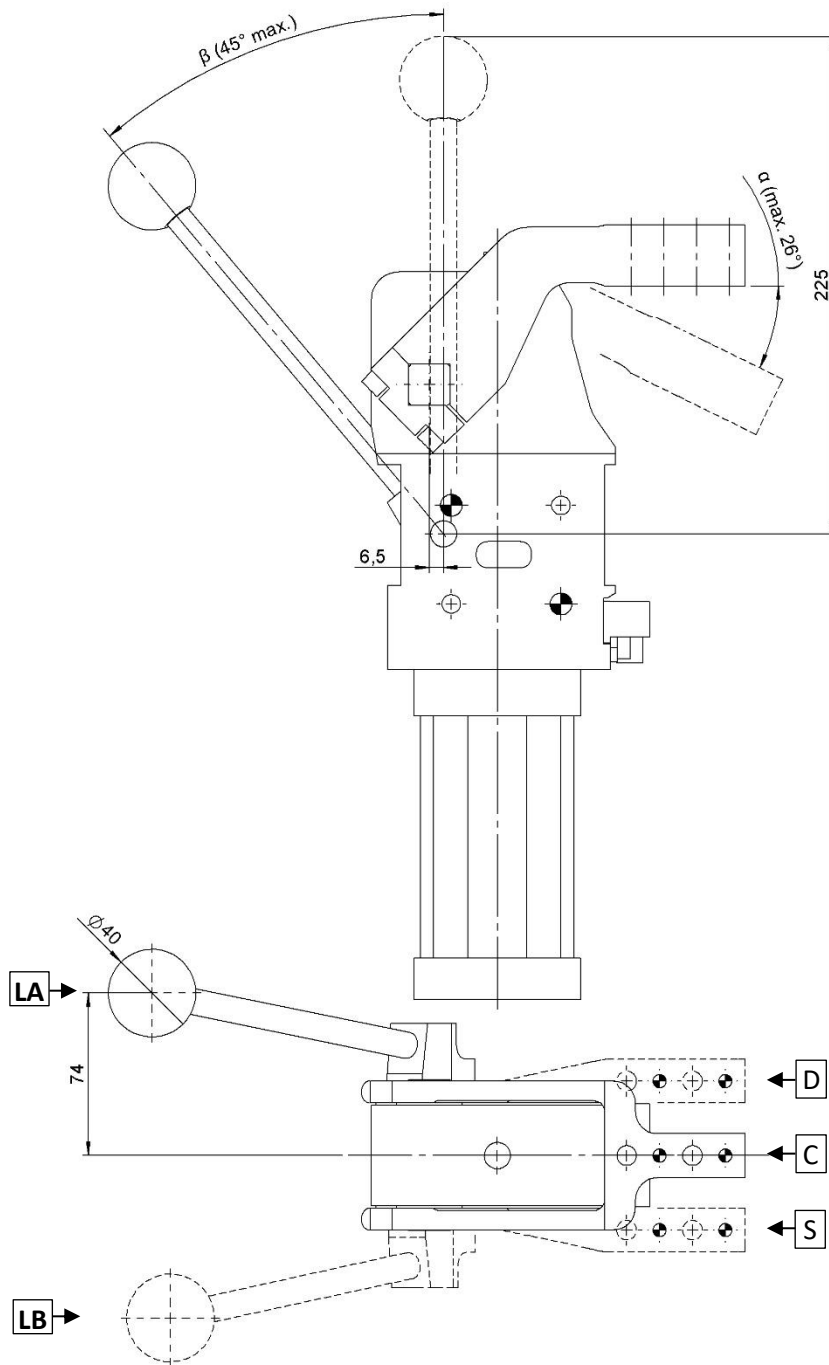
#Tolleranze: fori spina ±0.02, fori filettati ±0.1
 #Tolerances: dowel holes ±0.02, screw holes ±0.1

Modello Type	Alesaggio cilindro Cylinder bore	Momento di ritegno Holding moment	Peso Weight	Pressione d'esercizio Working pressure	Max. forza manuale applicabile Max. manual force
	[mm]	[Nm]	[Kg]	[bar]	[N]
CPLM50L...H3...	50	1300	~ 4,5	4 – 8	200
CPLM63L...H3...	63	1700	~ 5,5		



CPLM50L...V3...S / CPLN63L...V3...S

Chiusura, D.50/63, Ang. Vario, Cmd. Manuale, Vert. Sim., Offset 45
 Clamp, D.50/63, Vario Op. Angle, Hand Lever, Vert. Sym., Offset 45



α	26°
β	45°

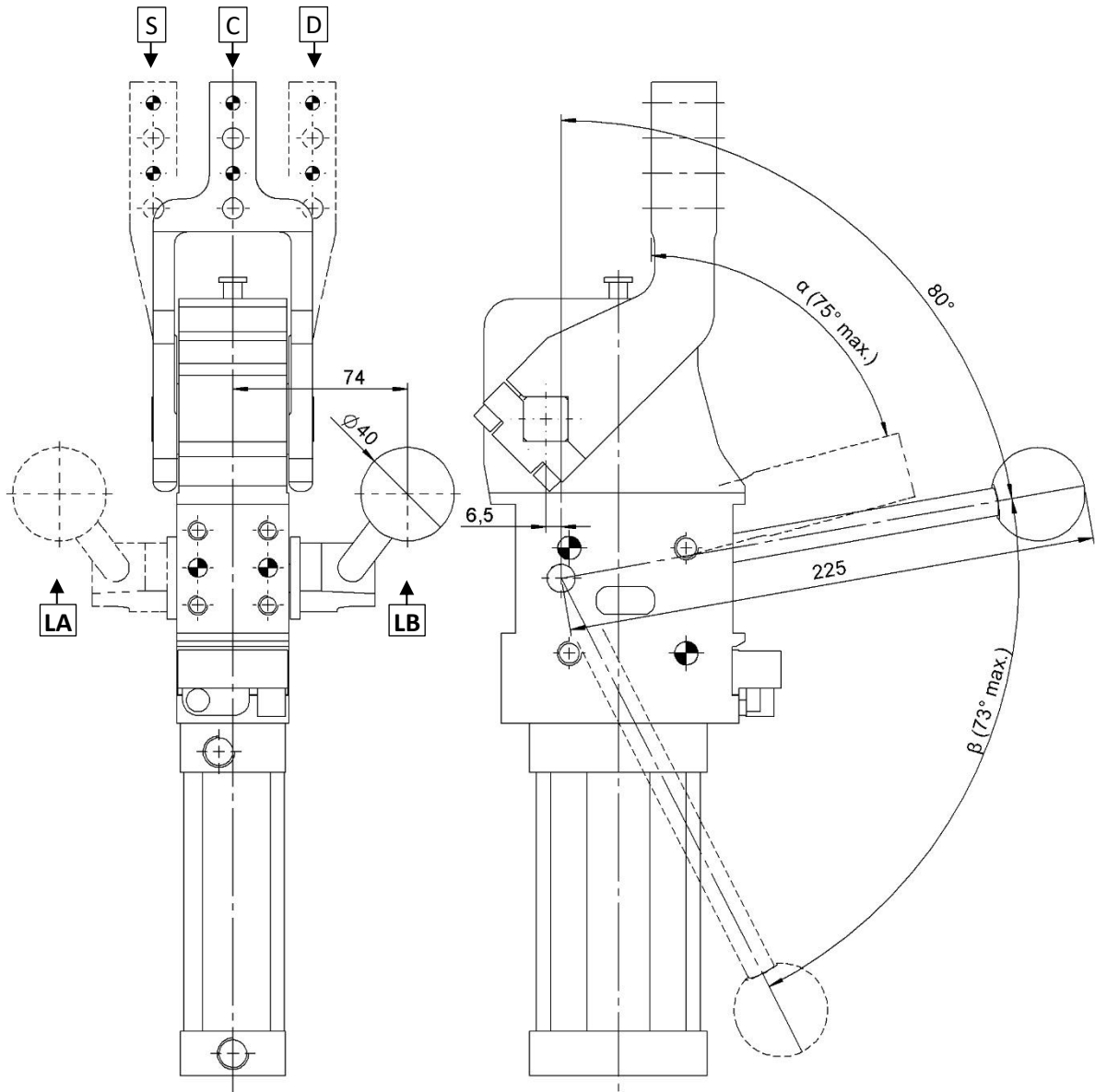
#Tolleranze: fori spina ± 0.02 , fori filettati ± 0.1
 #Tolerances: dowel holes ± 0.02 , screw holes ± 0.1

Modello Type	Alesaggio cilindro Cylinder bore	Momento di ritengo Holding moment	Peso Weight	Pressione d'esercizio Working pressure	Max. forza manuale applicabile Max. manual force
	[mm]	[Nm]	[Kg]	[bar]	[N]
CPLM50L...V3...S	50	1300	~ 4,5	4 – 8	200
CPLM63L...V3...S	63	1700	~ 5,5		



CPLM50L...H3...S / CPLM63L...H3...S

Chiusura, D.50/63, Ang. Vario, Cmd. Manuale, Orizz. Sim., Offset 45
 Clamp, D.50/63, Vario Op. Angle, Hand Lever, Horiz. Sym., Offset 45



α	16°	30°	46°	58°	75°
β	37°	47°	57°	63°	73°

Leva comando manuale orientabile ad intervalli di 20°
 Manual control adjustable in steps of 20°

#Tolleranze: fori spina ±0.02, fori filettati ±0.1
 #Tolerances: dowel holes ±0.02, screw holes ±0.1

Modello Type	Alesaggio cilindro Cylinder bore	Momento di ritegno Holding moment	Peso Weight	Pressione d'esercizio Working pressure	Max. forza manuale applicabile Max. manual force
	[mm]	[Nm]	[Kg]	[bar]	[N]
CPLM50L...H3...S	50	1300	~ 4,5	4 – 8	200
CPLM63L...H3...S	63	1700	~ 5,5		

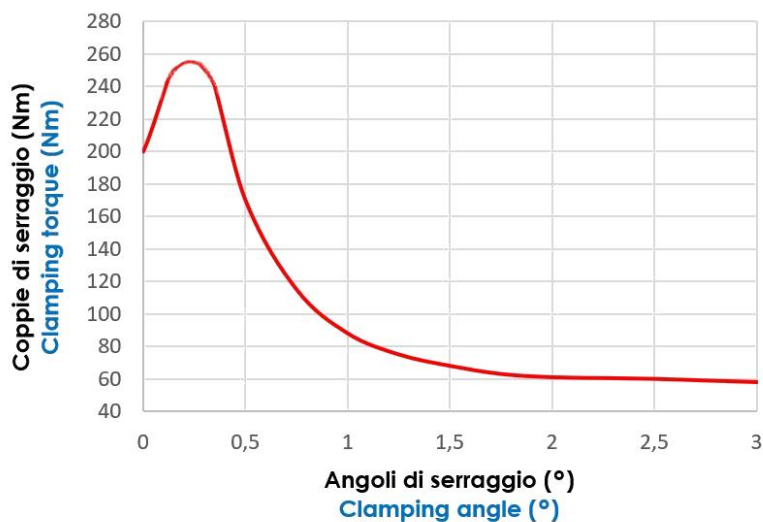


Diagrammi CPL50.

Diagrams CPL50.

Coppia di bloccaggio (Nm)

Clamping torque (Nm)

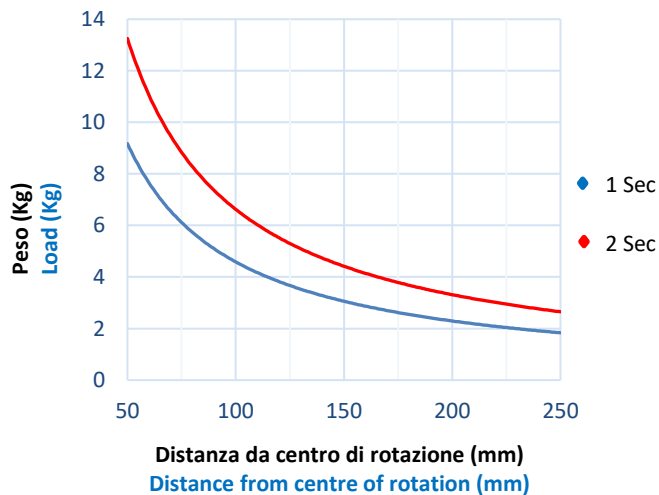


Coppia max. di bloccaggio (5 bar): **250 Nm.**

Max. clamping torque (5 bar): **250 Nm.**

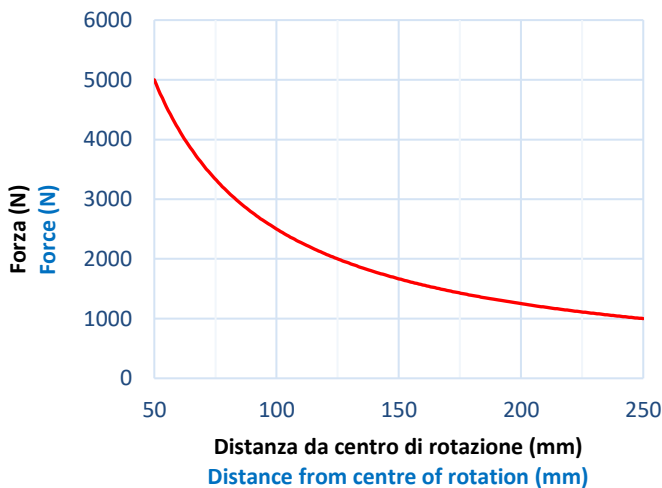
Carico max. applicabile alla leva (Kg) a 5 bar.

Max. load applicable on the arm (Kg) at 5 bar.



Forza max. esercitata (N) a 5 bar.

Max. force applied (N) at 5 bar.



Modello Type	Coppia max. dal peso Max. torque By weight [Nm]		Coppia max. con tassello fuori asse The max torque for applications with the load out of axis [Nm]	
	1 sec	2 sec	1 sec	2 sec
CPL 50	4.5	6.5	3.6	5.2

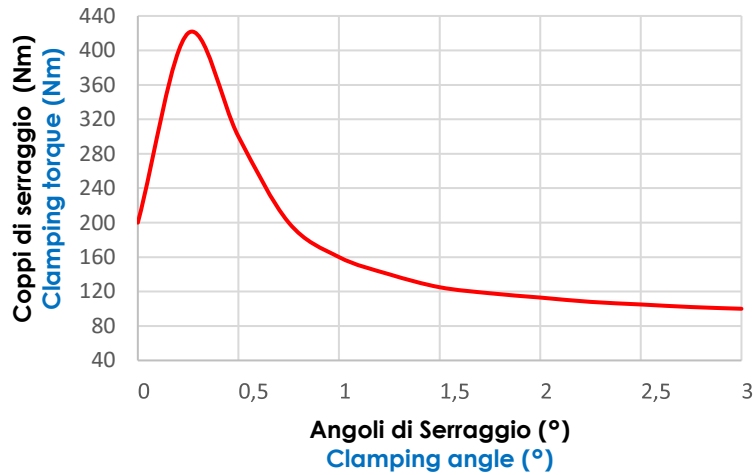


Diagrammi CPL63.

Diagrams CPL63.

Coppia di bloccaggio (Nm)

Clamping torque (Nm)

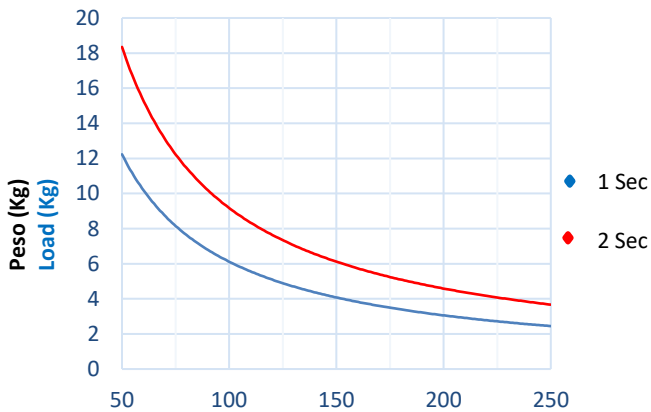


Coppia max. di bloccaggio (5 bar): **420 Nm.**

Max. clamping torque (5 bar): **420 Nm.**

Carico max. applicabile alla leva (Kg) a 5 bar.

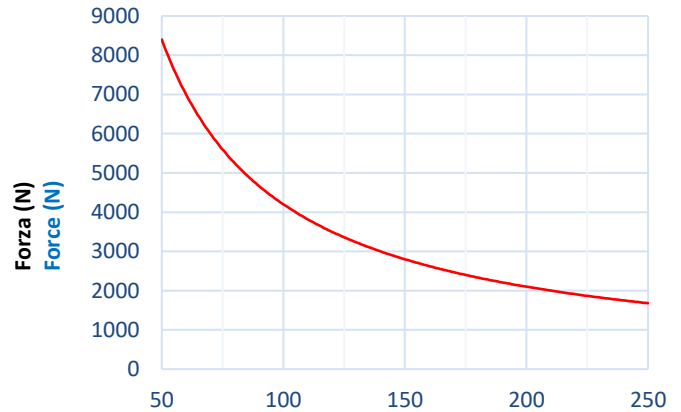
Max. load applicable on the arm (Kg) at 5 bar.



Distanza da centro di rotazione (mm)
Distance from centre of rotation (mm)

Forza max. esercitata (N) a 5 bar.

Max. force applied (N) at 5 bar.



Distanza da centro di rotazione (mm)
Distance from centre of rotation (mm)

Modello Type	Coppia max. dal peso Max. torque By weight [Nm]		Coppia max. con tassello fuori asse The max torque for applications with the load out of axis [Nm]	
	1 sec	2 sec	1 sec	2 sec
CPL 63	6.0	9.0	4.8	7.2



Istruzioni operative.

Operating instructions.

Modifica angolo d'apertura.

- Portare la leva in posizione di apertura; (Imm. 1)
- Svitare il grano M6 sottostante al sensore induttivo; (Imm. 2)
- Inserire nel foro una chiave con Ø max. di 5mm, e spingere la molla applicando una forza ≥ 80 N; (Imm. 3)
- Mantenere la spinta sulla molla e spostare manualmente la leva nella posizione desiderata;
- Rilasciare il sistema a molla per permettere l'aggancio automatico dei componenti.

Opening angle change.

- Bring the clamp arm in the opening position; (Image 1)
- Unscrew the M6 socket screw below the inductive sensor; (Image 2)
- Put a key with Ø max. 5 mm into the hole, and push the spring applying a force ≥ 80 N; (Image 3)
- Keep pushing on the spring and move the clamp arm manually to the desired position;
- Release the spring to allow the automatic coupling of the components.

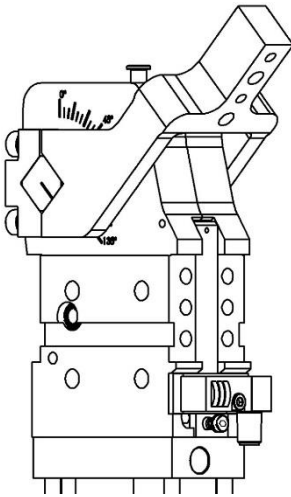


Immagine 1
Image 1

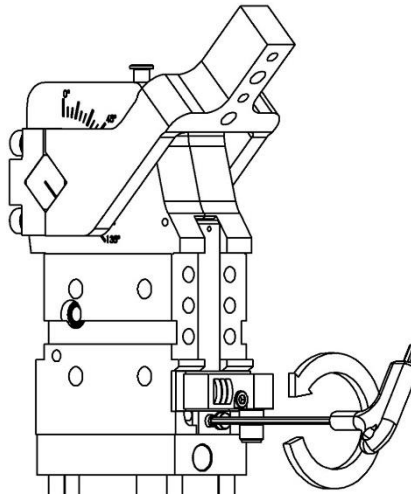


Immagine 2
Image 2

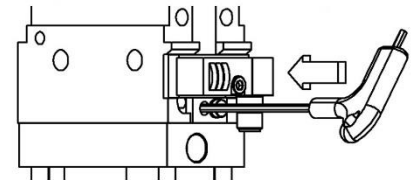


Immagine 3
Image 3

Angoli d'apertura.

Opening angles.

Tipo Type	Angoli d'apertura / Opening angles																	
	2,5	4	6	8	10	13	16	19	22	26	30	34	38	42	46	50	54	58
CPL...V1 CPL...V3	•	•	•	•	•	•	•	•	•	•	•	•	•	•	•	•	•	•
CPL...H1 CPL...H3	•	•	•	•	•	•	•	•	•	•	•	•	•	•	•	•	•	•
CPL...H1...S CPL...H3...S	•	•	•	•	•	•	•	•	•	•	•	•	•	•	•	•	•	•
CPL...V1...S	•	•	•	•	•	•	•											
CPL...V3...S	•	•	•	•	•	•	•	•	•	•								

Tipo Type	Angoli d'apertura / Opening angles																
	62	67	71	75	79	83	87	91	95	99	103	107	112	117	122	128	135
CPL...V1 CPL...V3	•	•	•	•	•	•	•	•	•	•	•	•	•	•	•	•	•
CPL...H1 CPL...H3	•	•	•	•	•	•	•	•	•	•	•						
CPL...H1...S CPL...H3...S	•	•	•	•													



Gruppo aggancio leva.

Retaining clip.

Il dispositivo (particolare "A") applicato sulla chiusura serve ad assicurare, in fase d'apertura della leva ed in assenza d'aria nella rete pneumatica, che il tassello di bloccaggio non vari la posizione.

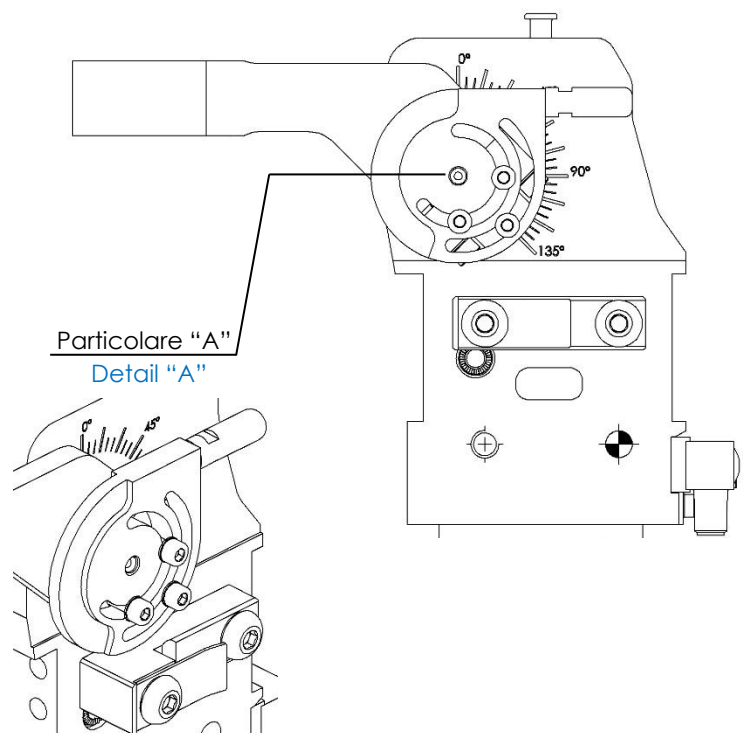
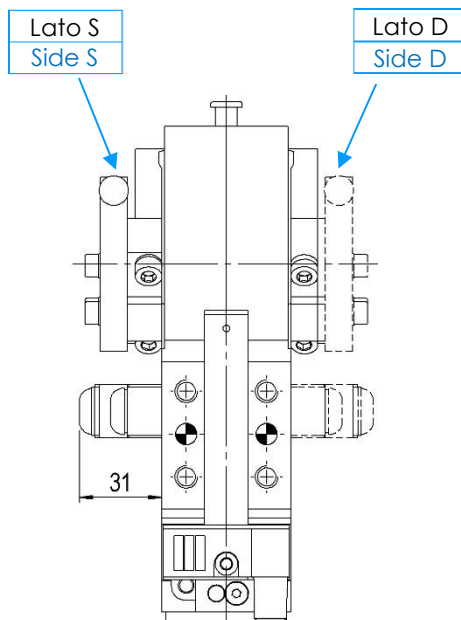
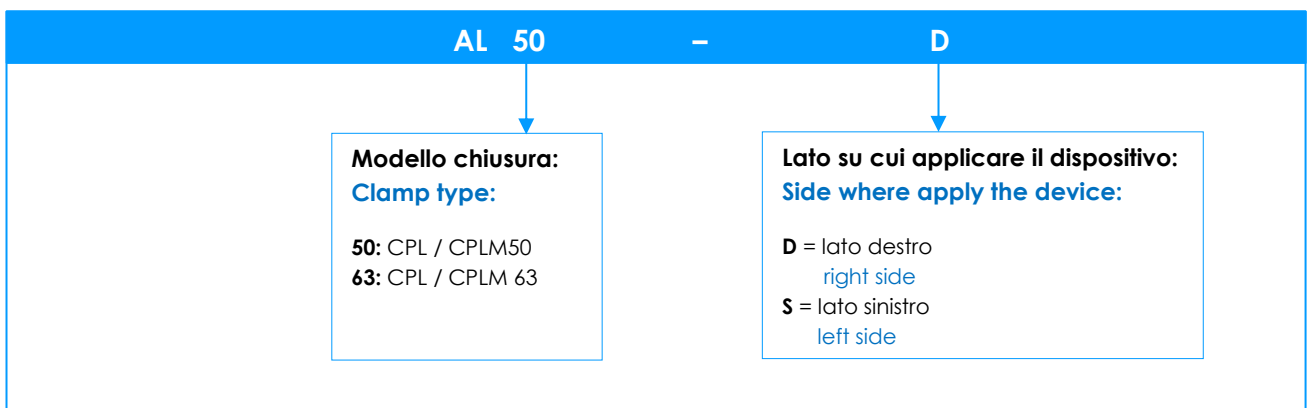
(N.B.: rispettare le coppie di carico max. applicabile alla leva).

The device (detail "A") applied on the clamp ensure, in opening position and when there isn't air in the pneumatic net, that arm doesn't change its position.

(NOTE: Not exceed the max. torque applicable on the lever).

Codice d'ordine.

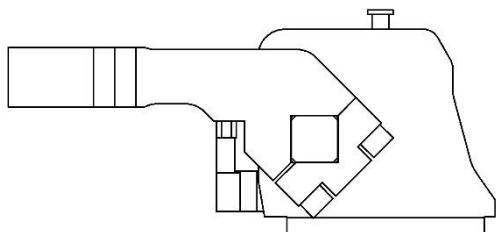
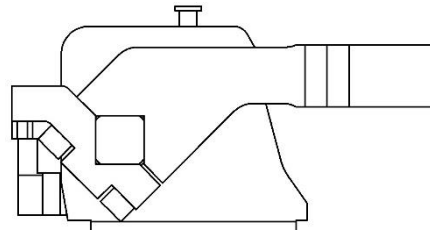
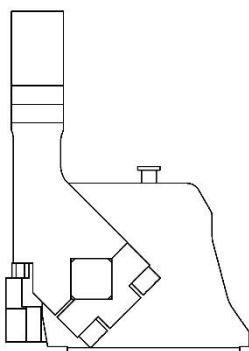
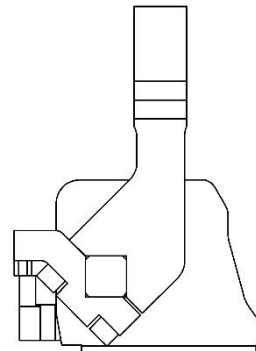
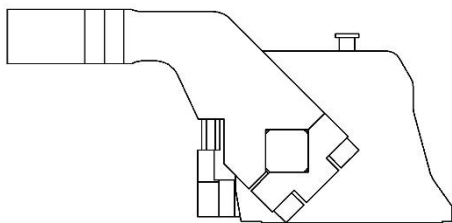
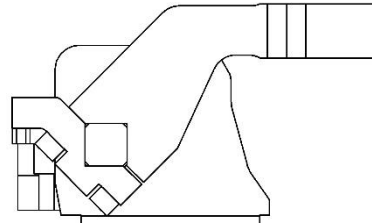
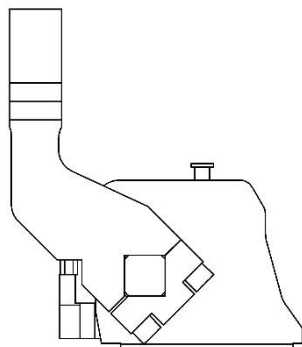
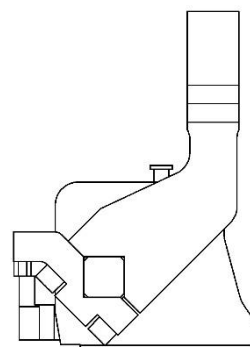
Ordering example.



**Tassello fermo leva esterno.****External Arm hard stop.**

La presenza del tassello fermo leva esterno dev'essere scelta all'ordine, dal momento che non può essere aggiunto successivamente.

The presence of the external arm hard stop must be chosen at the order, because it cannot be added later.

**Codice d'ordine / Ordering example****CPL50 TV1...****CPL63 TV1...****CPL50 TV1...S...****CPL63 TV1...S...****Codice d'ordine / Ordering example****CPL50 TH1...****CPL63 TH1...****CPL50 TH1...S...****CPL63 TH1...S...****Codice d'ordine / Ordering example****CPL50 TV3...****CPL63 TV3...****CPL50 TV3...S****CPL63 TV3...S****Codice d'ordine / Ordering example****CPL50 TH3...****CPL63 TH3...****CPL50 TH3...S****CPL63 TH3...S**